

FOUO - FOR OFFICIAL USE ONLY



US ARMY CORPS OF ENGINEERS WILMINGTON

PANEL 'SDP' table with columns for CT, DESCRIPTION, LIGHT, RECP, MOTOR, HEAT, OTHER, C, EGC, N, W, CB, PHASE, and various electrical load data.

PANEL 'RP2' table with columns for CT, DESCRIPTION, LIGHT, RECP, MOTOR, HEAT, OTHER, C, EGC, N, W, CB, PHASE, and various electrical load data.

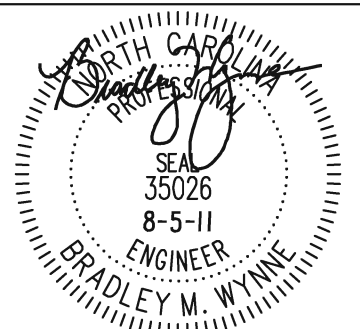
PANEL 'LP' table with columns for CT, DESCRIPTION, LIGHT, RECP, MOTOR, HEAT, OTHER, C, EGC, N, W, CB, PHASE, and various electrical load data.

PANEL 'RP3' table with columns for CT, DESCRIPTION, LIGHT, RECP, MOTOR, HEAT, OTHER, C, EGC, N, W, CB, PHASE, and various electrical load data.

PANEL 'RP1' table with columns for CT, DESCRIPTION, LIGHT, RECP, MOTOR, HEAT, OTHER, C, EGC, N, W, CB, PHASE, and various electrical load data.

NEUTRAL CONDUCTOR NOTE: INDIVIDUAL NEUTRAL CONDUCTORS SHALL BE PROVIDED FOR EACH CIRCUIT INDICATED AS REQUIRING A NEUTRAL CONDUCTOR. SHARED NEUTRALS SHALL NOT BE PERMITTED.

EDI Engineered Designs, Inc. 1151 SE Cary Parkway, Suite 200 Cary, North Carolina 27518 Office: 919.851.8481 Fax: 919.851.9703



Vertical table with columns for SYMBOL, DESCRIPTION, DATE, and BY.

Vertical table with columns for DATE, SOLICITATION NO., CONTRACT NO., CATEGORY CODE, DATE OF CONTRACT, DATE OF ISSUE, DATE OF AS SHOWN.

DESIGNED BY: WYNNE; DWN BY: VELEZ; CHECKED BY: VELEZ; SUBMITTED BY: VELEZ; PREPARED BY: VELEZ; DATE OF CONTRACT: 12/14/2020; DATE OF ISSUE: 05/08/2021; DATE OF AS SHOWN: 05/08/2021.

JSOC SOF FACILITY MOTOR POOL ADDITION - SOLSE FORT BRAGG, NORTH CAROLINA ELECTRICAL PANEL SCHEDULES

PLATE REFERENCE NUMBER E-602 SHEET 61

ELECTRICAL LIGHTING FIXTURE SCHEDULE

FIXTURE TYPE	DESCRIPTION	MOUNTING	VOLTS/WATTS	LAMPS		NO. OF BALLASTS	MANUFACTURER	SERIES NO.	REMARKS
				NO.	TYPE				
A1	HIGH-BAY FLUORESCENT, SOLID ENCLOSURE AND WIRE GUARD	PENDENT 28'-6" AFF	120/358	6	54W T5HO	2	DAYBRITE LITHONIA COLUMBIA	FBF SERIES FGB SERIES LHR SERIES	
A1E	HIGH-BAY FLUORESCENT, SOLID ENCLOSURE AND WIRE GUARD	PENDENT 28'-6" AFF	120/358	6	54W T5HO	2	DAYBRITE LITHONIA COLUMBIA	FBF SERIES FGB SERIES LHR SERIES	PROVIDE 90 MINUTE BATTERY BACK-UP SUPPLY FOR TWO (2) LAMPS. THE COMBINED OUTPUT OF BOTH LAMPS SHALL BE 2500 LUMENS.
WP1	HEAVY DUTY DIE CAST ALUMINUM HOUSING SMALL WALL PACK FIXTURE	WALL 7'-6" AFG	120/48	1	42W CFL	1	DAYBRITE LITHONIA HUBBELL	WLD SERIES TWAC SERIES NRG1000 SERIES	U.L. WET LOCATION LISTED, PROVIDE WITH INTEGRAL PHOTOCCELL
WP2	HEAVY DUTY DIE CAST ALUMINUM HOUSING, W/ GLASS REFRACTOR, MEDIUM WALL PACK FIXTURE	WALL	120/188	1	150W HPS	1	DAYBRITE LITHONIA HUBBELL	WLM SERIES TWH SERIES PGM3 SERIES	U.L. WET LOCATION LISTED, MOUNT FIXTURE 2'-0" ABOVE ROLL-UP DOORS
EX	L.E.D. UNIVERSAL THERMOPLASTIC FRAME EXIT SIGN, WHITE FINISH, RED LETTERS	WALL	120/3	-	L.E.D.	N/A	DAYBRITE LITHONIA DUAL-LITE	CXL SERIES LQM SERIES LX SERIES	PROVIDE 90 MINUTE BATTERY BACK-UP SUPPLY. PROVIDE FACES AND DIRECTIONAL ARROWS AS INDICATED ON PLANS.
XR	EXTERIOR EMERGENCY EGRESS LIGHT FIXTURE	WALL 7'-6" AFG	120/12	2	6W HALOGEN	N/A	DAYBRITE LITHONIA ASTRALITE	PATRON SERIES AFFINITY SERIES DCOAP SERIES	PROVIDE 90 MINUTE BATTERY BACK-UP SUPPLY

LIGHTING FIXTURE SCHEDULE NOTES:

- ALL FLUORESCENT LIGHTING BALLAST SHALL HAVE I.C. ELECTRONIC BALLAST WITH MINIMUM 90% POWER FACTOR.
- ALL BALLASTS SHALL BE ENERGY SAVINGS ELECTRONIC UNLESS NOTED OTHERWISE.
- ALL LIGHTING FIXTURES SHALL BE U.L. LISTED.
- VERIFY ALL MOUNTING HEIGHTS WITH CONTRACTING OFFICER PRIOR TO ROUGH-IN.
- ALL FLUORESCENT LIGHTING FIXTURES SHALL BE PROVIDED WITH A DISCONNECTING MEANS PER NEC 410.130.
- THE ELECTRICAL CONTRACTOR SHALL BE RESPONSIBLE THAT ALL COMPONENTS (LIGHTING FIXTURES, DIMMING BALLAST, ELECTRONIC BALLASTS, DIMMERS, DIMMING SYSTEMS, PHOTO CONTROL SYSTEMS, LAMPS) ARE 100% COMPATIBLE, PRIOR TO ORDERING EQUIPMENT. THE ELECTRICAL CONTRACTOR SHALL BARE ALL COST AS REQUIRED TO SUPPLY AND INSTALL A 100% COMPLETE LIGHTING SYSTEM AS DEFINED IN THIS SET OF CONSTRUCTION DRAWINGS.
- ALL LAMPS SHALL BE LOW MERCURY TYPE.
- ALL EXIT SIGNS AND EMERGENCY LIGHTING SHALL BE CONNECTED TO AN UNSWITCHED HOT CONDUCTOR AND WIRED PER MANUFACTURER'S SPECIFICATIONS.

MECHANICAL/ELECTRICAL COORDINATION SCHEDULE

EQUIPMENT DESIGNATION	EQUIPMENT DESCRIPTION	EQUIPMENT FURN. BY	VOLTS/PHASE	KW	HP	MCA	DISCONNECT FURN. BY	STARTERS FURN. BY	CONTROLS	REMARKS
VEF1-VEF2	VEHICLE EXHAUST FAN SYST.	M.C.	208/3	N/A	3.0	N/A	CONTRACTOR	CONTRACTOR	STARTER HAND/OFF SWITCH	1
VEF3-VEF4	VEHICLE EXHAUST FAN SYST.	M.C.	208/3	N/A	5.0	N/A	CONTRACTOR	CONTRACTOR	STARTER HAND/OFF SWITCH	1
EF-1	PROPELLER EXHAUST	M.C.	208/3	N/A	1.0	N/A	CONTRACTOR	CONTRACTOR	STARTER HAND/OFF SWITCH	-
EF-2	EXH. FAN WELDING HOOD	M.C.	208/3	N/A	1.5	N/A	CONTRACTOR	CONTRACTOR	REMOTE STARTER MANUAL PILOT SWITCH	-
EUH1-EUH6	ELECTRIC UNIT HEATER	M.C.	208/1	5.0	N/A	30.0 AMPS	N/A	N/A	208V LINE VOLTAGE T-STAT	-
VF1-VF3	VERTICAL CEILING FAN	M.C.	208/3	N/A	1.0	10.0 AMPS	CONTRACTOR	w/EQUIP.	KEY PAD CONTROLLER	-

REMARKS:

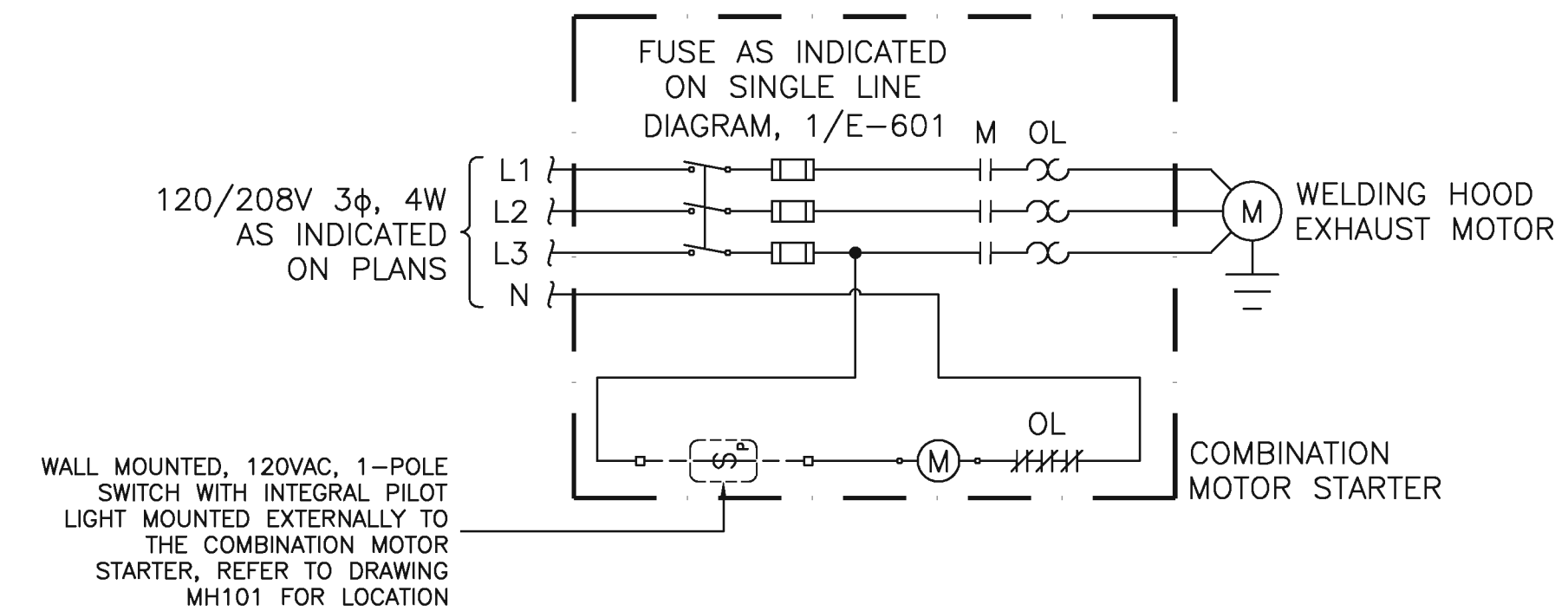
- THE EXHAUST FAN FOR THE AUTOMOTIVE VENTILATION SYSTEM IS A COMPONENT OF THE SYSTEM. THESE ARE MARKED AS "VEF" FOR VEHICLE EXHAUST FAN.

ABBREVIATIONS:

M.C. = MECHANICAL CONTRACTOR

PLUMBING/ELECTRICAL EQUIPMENT COORDINATION SCHEDULE

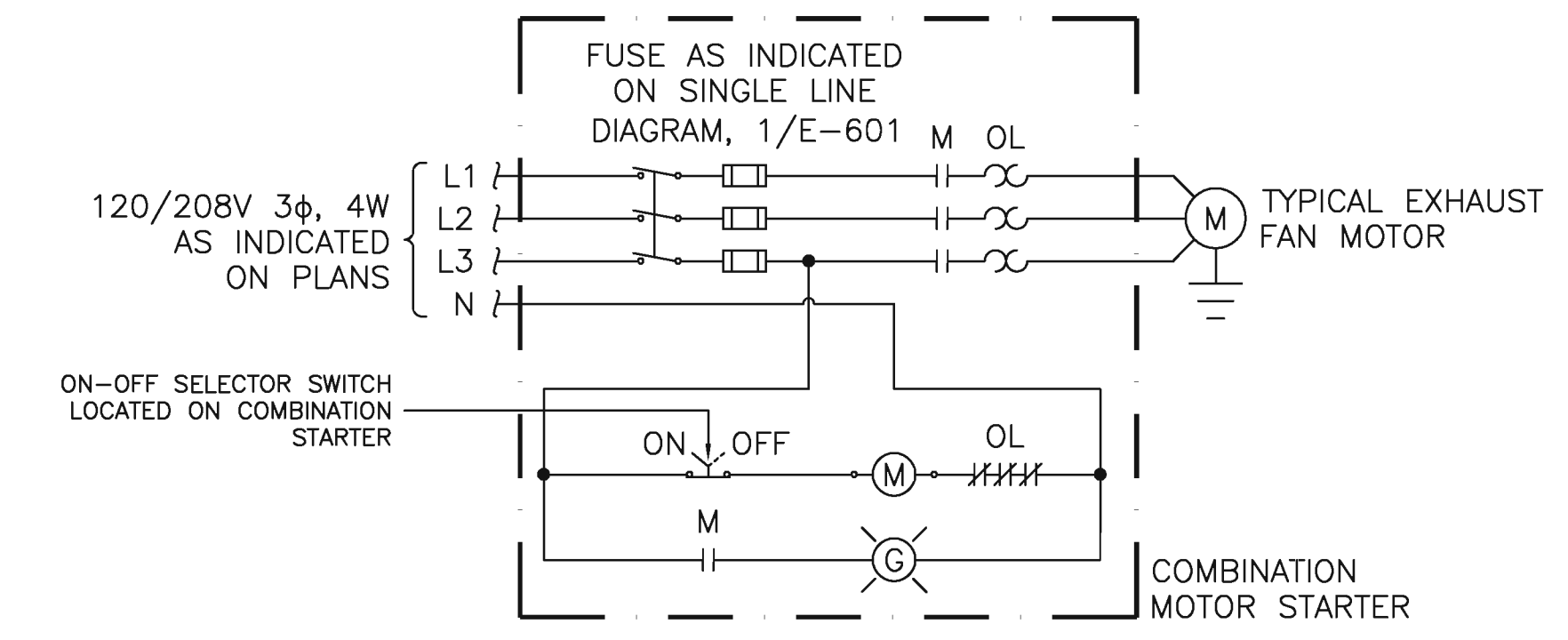
EQUIPMENT DESIGNATION	EQUIPMENT DESCRIPTION	EQUIPMENT FURNISHED BY	VOLTAGE/PHASE	HP	STARTER FURNISHED BY
COMP-1	AIR COMPRESSOR	PC	208/3	30	EC



1 WELDING HOOD MOTOR CONTROL SCHEMATIC

NOT TO SCALE
DETAIL APPLIES TO COMBINATION STARTERS ASSOCIATED WITH THE FOLLOWING EQUIPMENT:

- A) 'EF2'

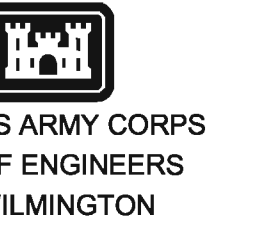
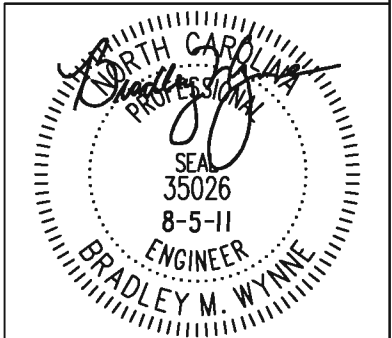


2 TYPICAL MOTOR CONTROL SCHEMATIC

NOT TO SCALE
DETAIL APPLIES TO COMBINATION STARTERS ASSOCIATED WITH THE FOLLOWING EQUIPMENT:

- A) 'VEF1'
B) 'VEF2'
C) 'VEF3'
D) 'VEF4'
E) 'EF1'

EDi
Engineered Designs, Inc.
1151 SE Cary Parkway, Suite 200
Cary, North Carolina 27518
Office: 919.851.8481
Fax: 919.851.9703



SYMBOL	DESCRIPTION	DATE	BY

DESIGNED BY: WYNN	DATE: 05 AUG 2011
DWN BY: WYNN	SOLICITATION NO.: TBD
SUBMITTED BY: VELEZ	CONTRACT NO.: TBD
FILE NAME: VELEZ	CATEGORY CODE: 1214-020
FILE NO: 1214-020	DATE: 05 AUG 2011
SCALE: AS SHOWN	

U.S. ARMY ENGINEER DISTRICT
CORPS OF ENGINEERS
WILMINGTON DISTRICT
GREENHORNE & O'MARA
ENGINEERS ARCHITECTS
1000 WILMINGTON BOULEVARD
WILMINGTON, NC 28403
TEL: 910.342.1000
WWW.GHO.COM

PLATE REFERENCE NUMBER
E-603
SHEET 62