



DATE	BY

SYMBOL	DESCRIPTION

DATE: 05 AUG 2011
SOLICITATION NO.: TBD
CONTRACT NO.: TBD
CATEGORY CODE: 1214-0020
PLANT DATE: 05 AUG 2011

DESIGNED BY: WYNNE
CRD BY: VELEZ
SUBMITTED BY: VELEZ
FILE NAME: EG102
SIZE: D
PLAT SCALE: AS SHOWN

DESIGNED BY: WYNNE
CRD BY: VELEZ
SUBMITTED BY: VELEZ
FILE NAME: EG102
SIZE: D
PLAT SCALE: AS SHOWN

DESIGNED BY: WYNNE
CRD BY: VELEZ
SUBMITTED BY: VELEZ
FILE NAME: EG102
SIZE: D
PLAT SCALE: AS SHOWN

DESIGNED BY: WYNNE
CRD BY: VELEZ
SUBMITTED BY: VELEZ
FILE NAME: EG102
SIZE: D
PLAT SCALE: AS SHOWN

DESIGNED BY: WYNNE
CRD BY: VELEZ
SUBMITTED BY: VELEZ
FILE NAME: EG102
SIZE: D
PLAT SCALE: AS SHOWN

DESIGNED BY: WYNNE
CRD BY: VELEZ
SUBMITTED BY: VELEZ
FILE NAME: EG102
SIZE: D
PLAT SCALE: AS SHOWN

DESIGNED BY: WYNNE
CRD BY: VELEZ
SUBMITTED BY: VELEZ
FILE NAME: EG102
SIZE: D
PLAT SCALE: AS SHOWN

DESIGNED BY: WYNNE
CRD BY: VELEZ
SUBMITTED BY: VELEZ
FILE NAME: EG102
SIZE: D
PLAT SCALE: AS SHOWN

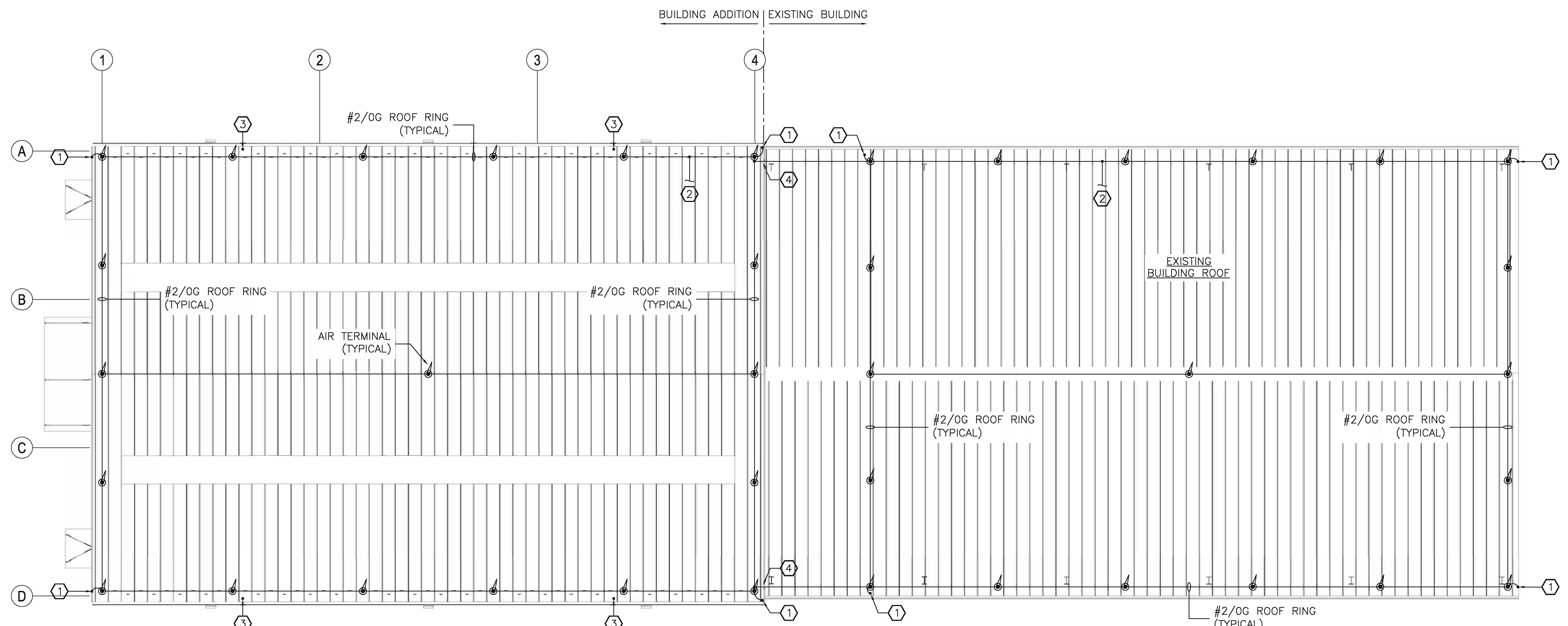
DESIGNED BY: WYNNE
CRD BY: VELEZ
SUBMITTED BY: VELEZ
FILE NAME: EG102
SIZE: D
PLAT SCALE: AS SHOWN

DESIGNED BY: WYNNE
CRD BY: VELEZ
SUBMITTED BY: VELEZ
FILE NAME: EG102
SIZE: D
PLAT SCALE: AS SHOWN

DESIGNED BY: WYNNE
CRD BY: VELEZ
SUBMITTED BY: VELEZ
FILE NAME: EG102
SIZE: D
PLAT SCALE: AS SHOWN

DESIGNED BY: WYNNE
CRD BY: VELEZ
SUBMITTED BY: VELEZ
FILE NAME: EG102
SIZE: D
PLAT SCALE: AS SHOWN

DESIGNED BY: WYNNE
CRD BY: VELEZ
SUBMITTED BY: VELEZ
FILE NAME: EG102
SIZE: D
PLAT SCALE: AS SHOWN



1 ELECTRICAL GROUNDING PLAN - ROOF
EG102 EG102 SCALE: 1/8"=1'-0"

LIGHTNING PROTECTION INSTALLATION NOTE

A NEW LIGHTNING PROTECTION SYSTEM SHALL BE INSTALLED PER NFPA 780, MIL-STD-188-124B, AND MIL-HDB-1004/6 FOR BOTH THE BUILDING ADDITION AND THE EXISTING BUILDING. ALL AIR TERMINALS, CONDUCTORS, ETC. INDICATED ON THIS DRAWING ARE NEW UNLESS OTHERWISE NOTED. IN ADDITION TO THE REQUIREMENTS OF THE ABOVE MENTIONED STANDARDS, THE LIGHTNING PROTECTION SYSTEM SHALL BE AS FOLLOWS:

1. THE LIGHTNING PROTECTION SYSTEM (LPS) SHALL BE A UL MASTER LABEL SYSTEM.
2. EXOTHERMIC WELDS SHALL BE INSTALLED IN ALL INACCESSIBLE LOCATIONS.
3. EXOTHERMIC WELDS SHALL BE INSTALLED IN ALL UNDERGROUND LOCATIONS.
4. LPS SHALL BE ISOLATED FROM THE BUILDING STRUCTURAL STEEL.
5. THE BSDC SHALL BONDED TO THE BUILDING STEEL (AT ROOF AND ALONG VERTICAL BEAM) MINIMUM TWO PLACES. BOND BSDC TO EARTH ELECTRODE SUBSYSTEM.
6. ALL METALLIC OBJECTS ON THE EXTERIOR OF THE BUILDING INCLUDING DOOR FRAMES, WINDOWS, HANDRAILS, EXHAUST FANS, PIPING, AND LOUVERS SHALL BE CONNECTED TO THE EARTH ELECTRODE SUBSYSTEM.
7. REFER TO DRAWING EG103 FOR ADDITIONAL LIGHTNING PROTECTION SYSTEM REQUIREMENTS.

NOTES KEYED TO PLAN

- ① 1-#2/0 AWG BARE COPPER DOWN CONDUCTOR, PROVIDE CONNECTION TO EARTH ELECTRODE SUBSYSTEM.
- ② PROVIDE GROUND CONNECTIONS TO ALL NEW AND EXISTING PLUMBING VENT STACKS, REFER TO ARCHITECTURAL DRAWINGS FOR LOCATION OF NEW VENT STACK. CONTRACTOR SHALL FIELD VERIFY EXACT LOCATION OF EXISTING VENT STACK AS REQUIRED.
- ③ 1-#2/0 AWG BUILDING STEEL DOWN CONDUCTOR (BSDC). PROVIDE MINIMUM 20' SEPARATION BETWEEN THE BSDC AND THE LIGHTNING PROTECTION SYSTEM DOWN CONDUCTOR
- ④ PROVIDE 1" SCH. 40 PVC CONDUIT FOR VERTICAL PORTION OF LIGHTNING PROTECTION CONDUCTOR TYING EXISTING AND ADDITION BUILDING LIGHTNING PROTECTION ZONES TOGETHER.



EDi
Engineered Designs, Inc.
1151 SE Cary Parkway, Suite 200
Cary, North Carolina 27518
Office: 919.851.8481
Fax: 919.851.9703

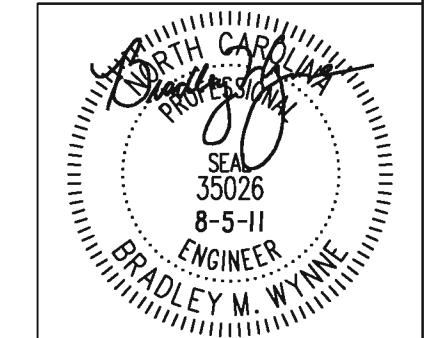


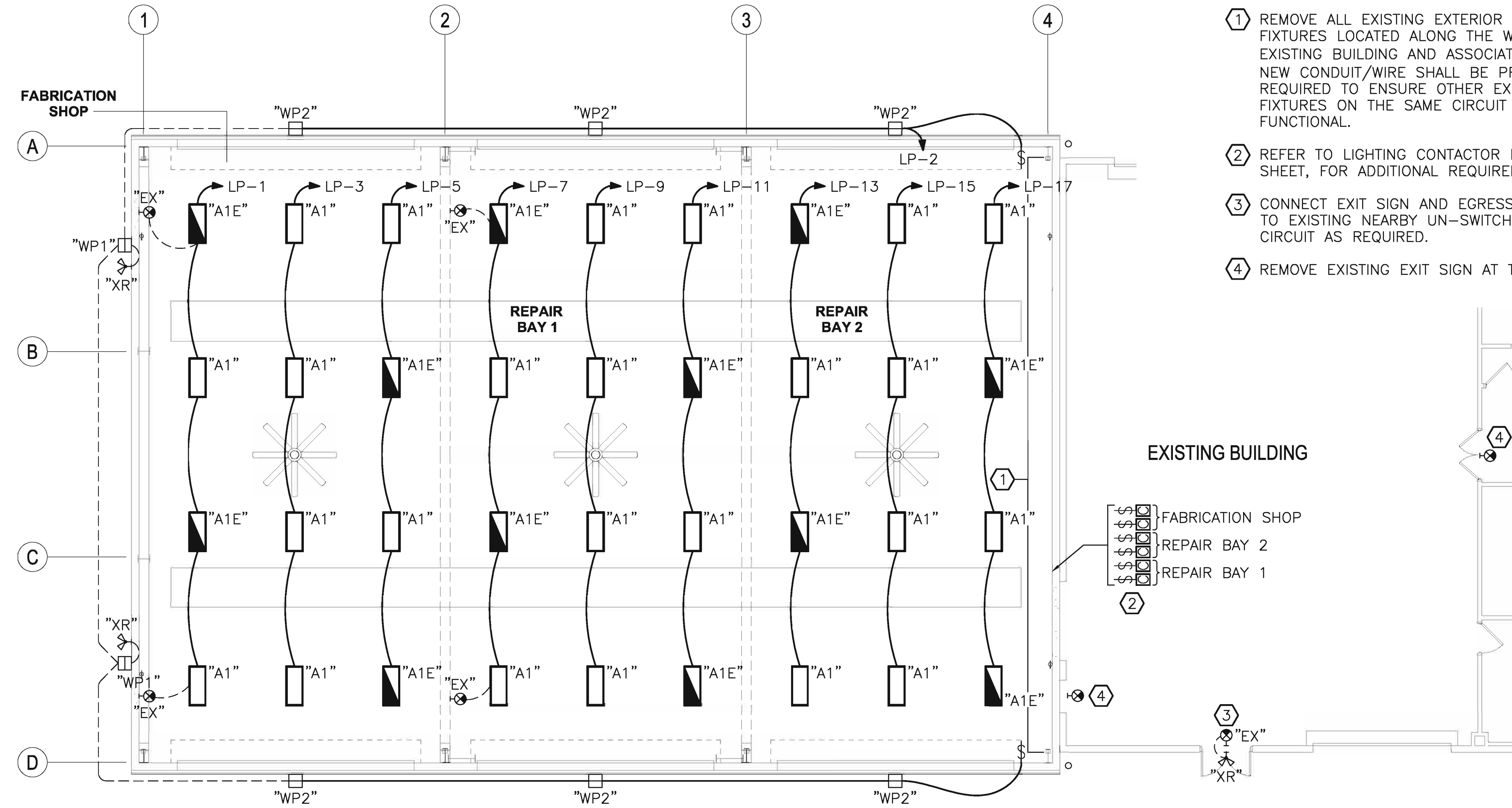
PLATE REFERENCE NUMBER
EG102
SHEET 55



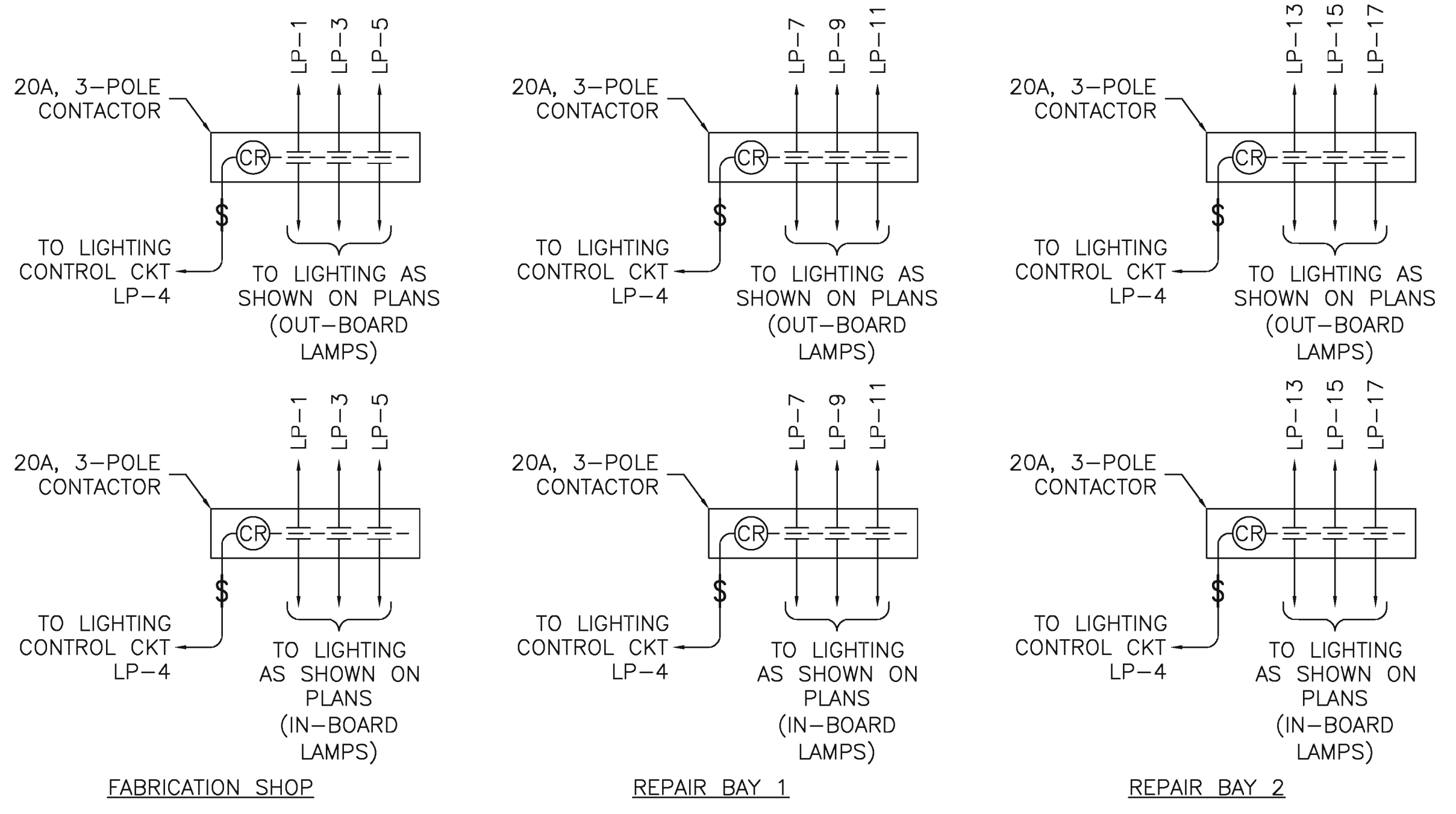
US ARMY CORPS OF ENGINEERS WILMINGTON

NOTES KEYED TO PLAN

- ① REMOVE ALL EXISTING EXTERIOR WALLPACK FIXTURES LOCATED ALONG THE WEST WALL OF THE EXISTING BUILDING AND ASSOCIATED CONDUIT/WIRE. NEW CONDUIT/WIRE SHALL BE PROVIDED AS REQUIRED TO ENSURE OTHER EXISTING EXTERIOR FIXTURES ON THE SAME CIRCUIT REMAIN FUNCTIONAL.
- ② REFER TO LIGHTING CONTACTOR DETAIL, THIS SHEET, FOR ADDITIONAL REQUIREMENTS.
- ③ CONNECT EXIT SIGN AND EGRESS LIGHT FIXTURE TO EXISTING NEARBY UN-SWITCHED LIGHTING CIRCUIT AS REQUIRED.
- ④ REMOVE EXISTING EXIT SIGN AT THIS LOCATION.



1 ELECTRICAL LIGHTING PLAN
EL101 EL101 SCALE: 1/8"=1'-0"



2 LIGHTING CONTACTOR DETAIL
EL101 EL101 SCALE: N.T.S.

SYMBOL	DESCRIPTION	DATE	BY

DESIGNED BY: WYNNIE	DATE: 05 AUG 2011
DWN BY: WYNNIE	SOLICITATION NO.: TBD
SUBMITTED BY: VELEZ	CONTRACT NO.: TBD
PROJECT NO.: 1214-020	CATEGORY CODE: 1214-020
PLANT SCALE: AS SHOWN	PLANT DATE: 05 AUG 2011

U. S. ARMY ENGINEER DISTRICT
CORPS OF ENGINEERS
WILMINGTON DISTRICT

GREENHORNE & O'MARA
ENGINEERS
1151 SE Cary Parkway, Suite 200
Cary, North Carolina 27518
Office: 919.851.8481
Fax: 919.851.9703

PLATE REFERENCE NUMBER
EL101
SHEET 57

