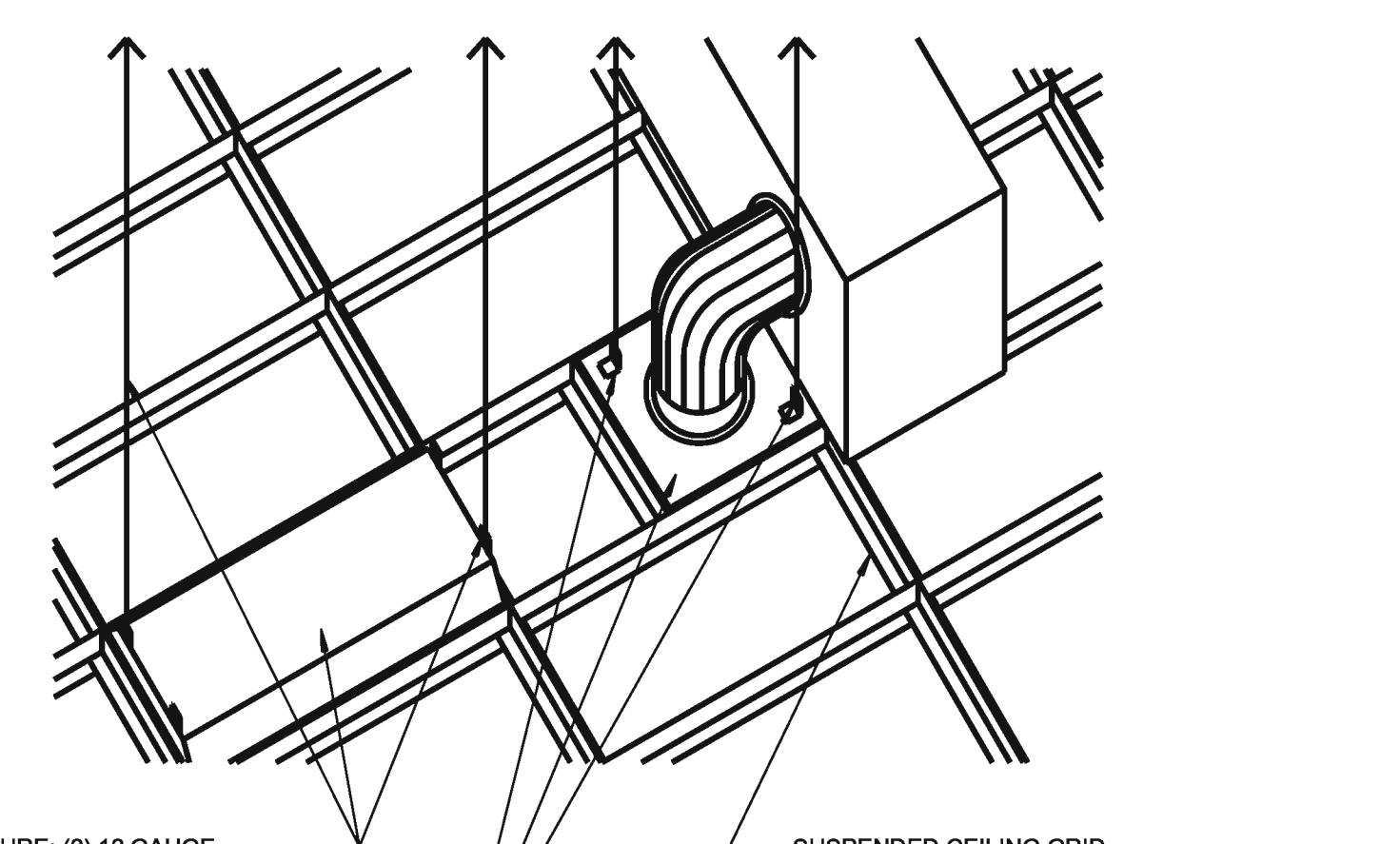


**1B PARTIAL REFLECTED CEILING PLAN**  
 A-110B 1/8" = 1'-0"  
 0 4' 8' 16'



LIGHT FIXTURE: (2) 12 GAUGE HANGER WIRES AT ALTERNATE CORNERS TO THE STRUCTURE ABOVE.

AIR-DIFFUSER: (2) 12 GAUGE HANGER WIRES AT ALTERNATE CORNERS TO THE STRUCTURE ABOVE.

NOTE: LIGHT FIXTURES OR DIFFUSERS IN EXCESS OF 50 POUNDS REQUIRE (4) 12 GAUGE HANGER WIRES.

SUSPENDED CEILING GRID

**1A CEILING DETAIL**  
 A-110B 1/2" = 1'-0"

**REFERENCE KEYNOTES:**

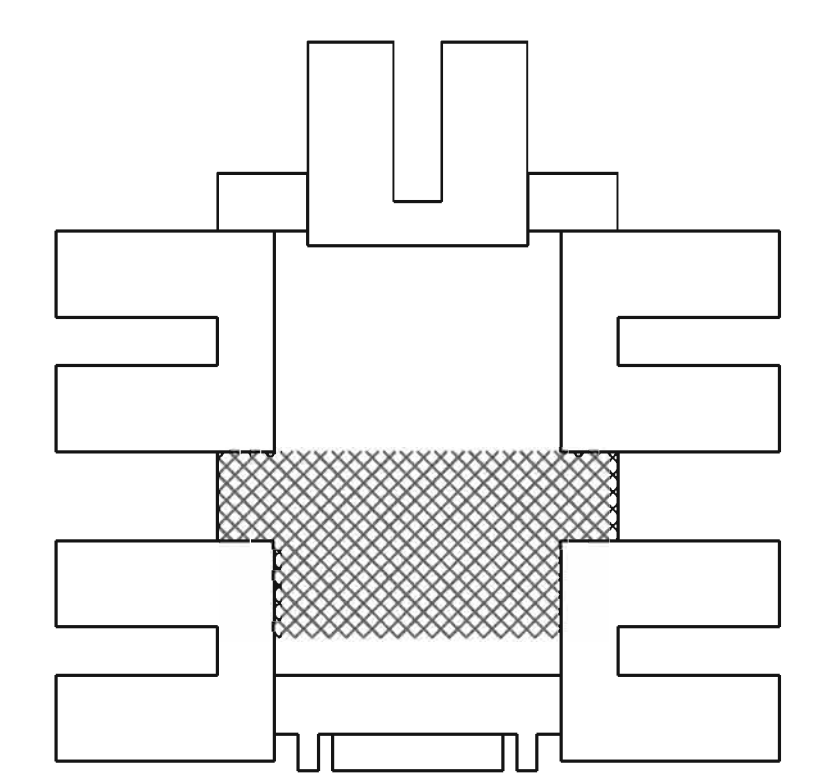
252 REMOVE AND REPLACE PORTIONS OF EXISTING GRID CEILING NECESSARY TO CONSTRUCT FIRE RATED SHAFT WALL TO DECK

**RCP LEGEND:**

- |  |   |  |                                     |  |   |
|--|---|--|-------------------------------------|--|---|
|  | AREA OUTSIDE OF SCOPE OF WORK                 |  | FLUORESCENT LIGHT FIXTURE           |  | SPRINKLER HEAD - WALL MOUNTED             |
|  | GYP. BOARD PAINTED CEILING OR SOFFIT          |  | OR                                  |  | SPRINKLER HEAD - CEILING MOUNTED          |
|  | 2' x 2' LAY-IN ACOUSTICAL CEILING TILE & GRID |  | EMERGENCY FLUORESCENT LIGHT FIXTURE |  | 2' x 2' GYPSUM BOARD CEILING ACCESS PANEL |
|  | METAL SOFFIT PANELS                           |  | LAY-IN FLUORESCENT                  |  | SUPPLY AIR GRILLE                         |
|  | EXPOSED STRUCTURE                             |  | DOWN LIGHT OR WALKWAY LIGHT         |  | RETURN AIR GRILLE                         |
|  |   |  | OCCUPANT SENSOR                     |  | EXIT SIGN                                 |
|  |   |  | PROJECTOR MOUNT                     |  |   |
|  |   |  | SPEAKER                             |  |   |
|  |   |  | OCCUPANCY SENSOR                    |  |   |

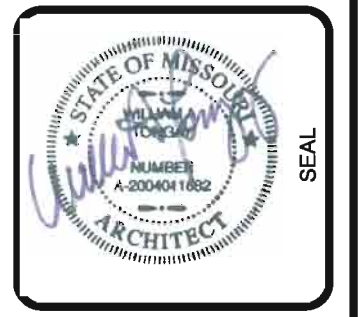
**GENERAL NOTES:**

- INSTALL EXPANSION JOINT COVERS AT ALL EXISTING EXPANSION JOINTS. REFERENCE DETAIL 3D ON SHEET A-110C. FIELD VERIFY EXACT LOCATIONS.
- PATCH/REPAIR ALL OPEN WALL PENETRATIONS RESULTING FROM REMOVAL OF DUCTWORK OR PIPING.



**KEY PLAN**

DESIGNED BY:	DATE:
DRAWN BY:	06 July 2011
CHECKED BY:	
DATE:	
SYMBOL:	
DESCRIPTION:	



DESIGNED BY:	DATE:
WEB	06 July 2011
OWN BY:	SOLICITATION NO.:
WAT	WZ12S10R003
WAT	CONTRACT NO.:
WAT	WZ12S10R003
FILE NAME:	PROJECT NO.:
WZ12S10R003	WZ12S10R003
SIZE:	PLANT CODE:
22"x34"	XX3434
AS NOTED	PLANT DATE:
	06/30/2011

U. S. ARMY ENGINEER DISTRICT SAVANNAH DISTRICT

Woodport - KZIT Construction

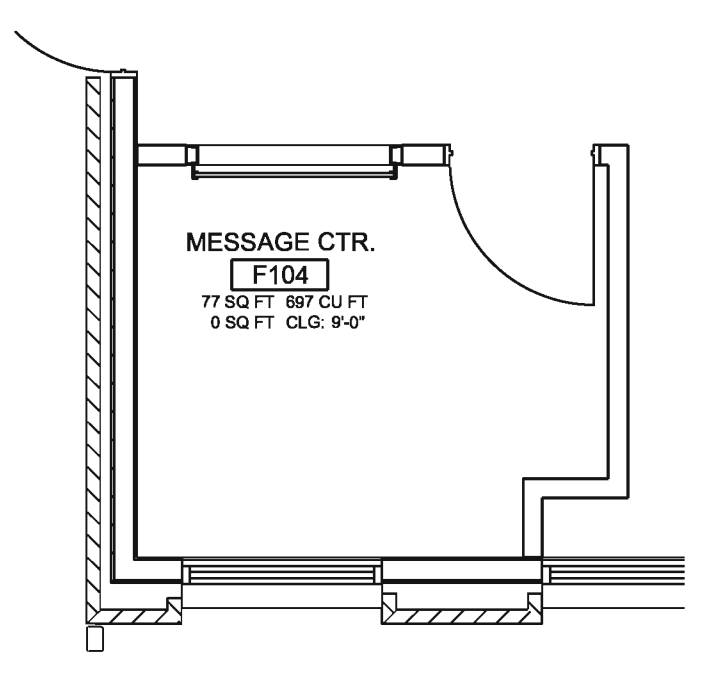
7815 N. 6TH COURT  
 375 Heritage Rd. Suite 100  
 Ft. Worth, TX 76107  
 Tel: (817) 391-4800  
 Fax: (817) 391-4800  
 www.kzit.com



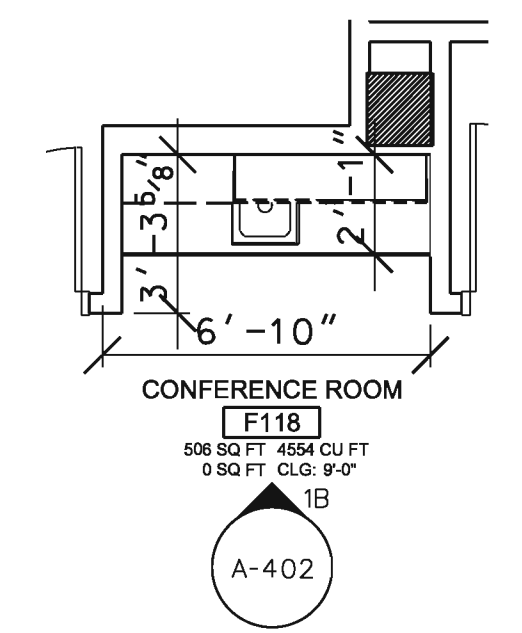




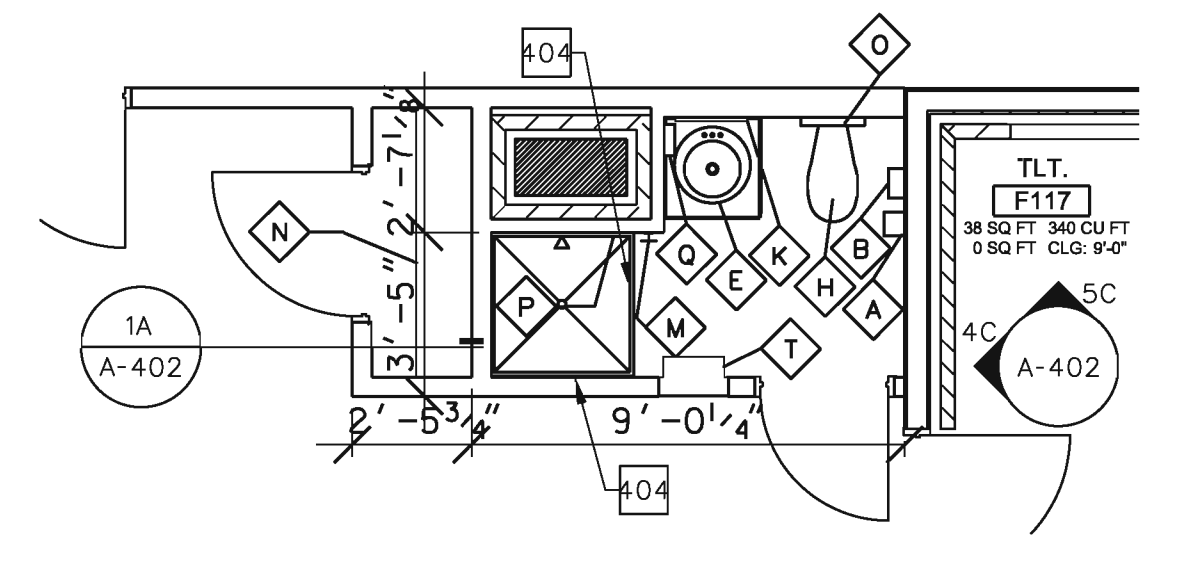




1D ENLARGED PLAN  
A-401 1/4" = 1'-0"



3D ENLARGED PLAN  
A-401 1/4" = 1'-0"



4D ENLARGED PLAN  
A-401 1/4" = 1'-0"

REFERENCE KEYNOTES:

- 401 FLOOR MOUNTED WOOD BENCH
- 402 ELECTRICAL WATER COOLERS - SEE PLUMBING (TYP.)
- 403 SOLID POLYMER TOILET PARTITIONS
- 404 SHOWER PAN - SEE DTL. 1A/AE501 & PLUMBING
- 405 VINYL SHOWER CURTAIN

GENERAL NOTES:

1. SEE SHEET A-402 FOR TYPICAL TOILET ACCESSORIES.
2. SEE INTERIORS DRAWINGS FOR FINISHES AND BUILT-IN FURNISHINGS.

US ARMY CORPS OF ENGINEERS SAVANNAH

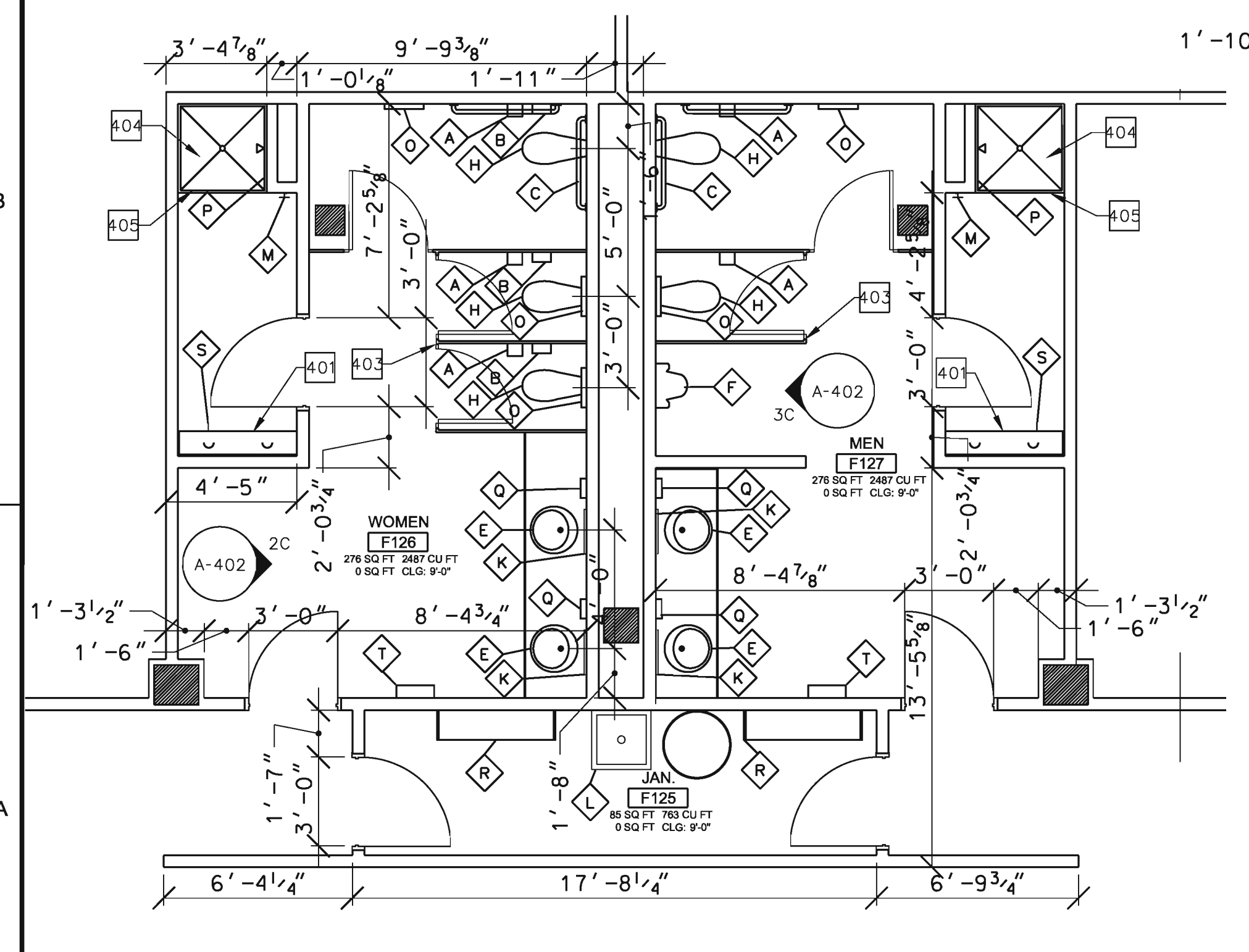
SYMBOL	DESCRIPTION	DATE	BY

STATE OF MISSISSIPPI ARCHITECT SEAL

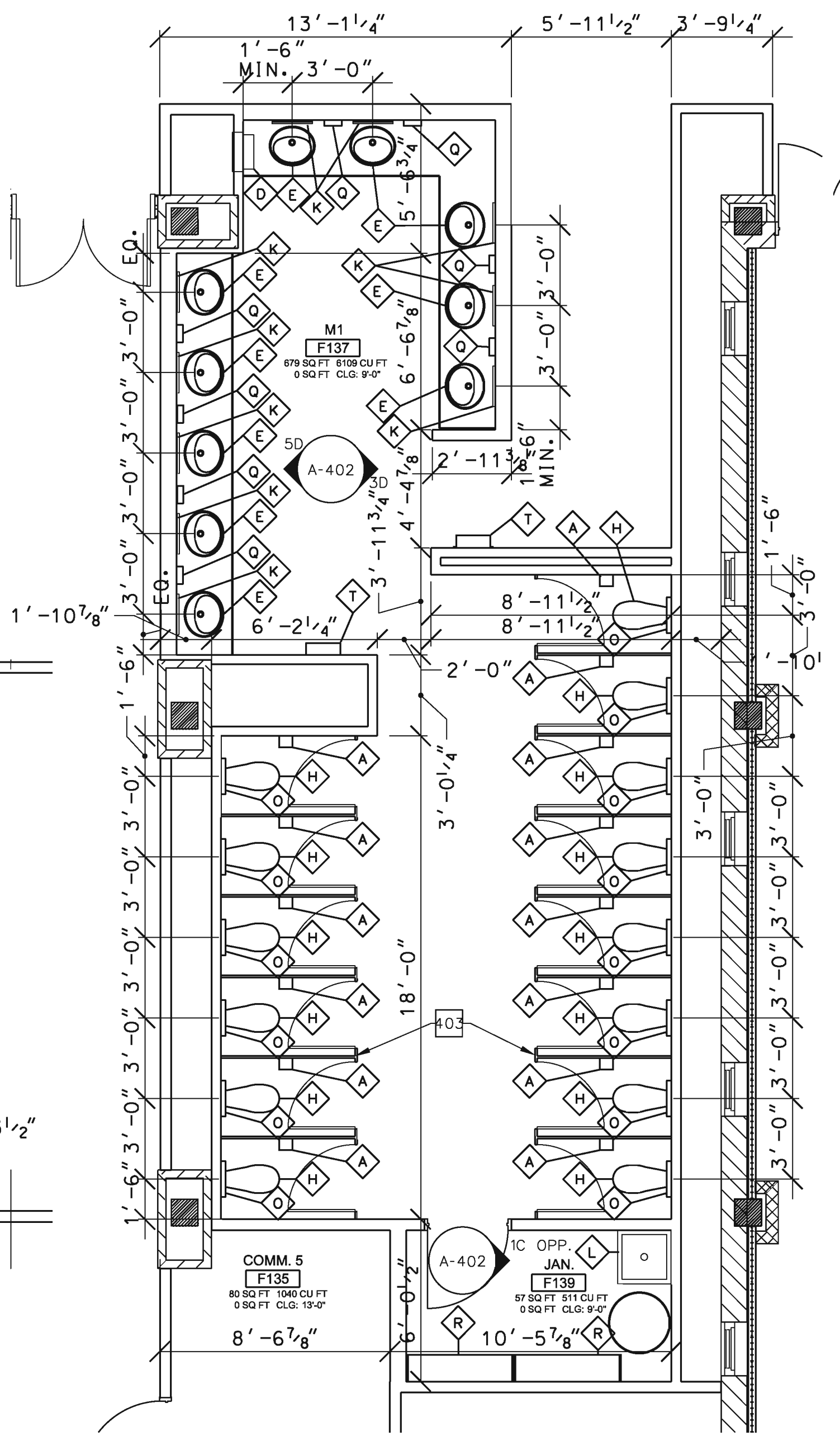
DESIGNED BY: WEB  
 DWN BY: WAT  
 CHECKED BY: WAT  
 DATE: 06 July 2011  
 SOLICITATION NO.: W212510R003  
 CONTRACT NO.: W212510R003  
 PROJECT NO.: W212510R003  
 U.S. ARMY ENGINEER DISTRICT SAVANNAH DISTRICT  
 Woodport - KZT  
 Construction  
 2615 N.W. 67th COURT  
 MIAMI, FL 33157  
 TEL: (770) 391-4600  
 WWW.WOODPORT.COM

QUAD DFAC AND STARSHIP RENOVATIONS  
**BUILDING 5500**  
**ENLARGED PLANS**

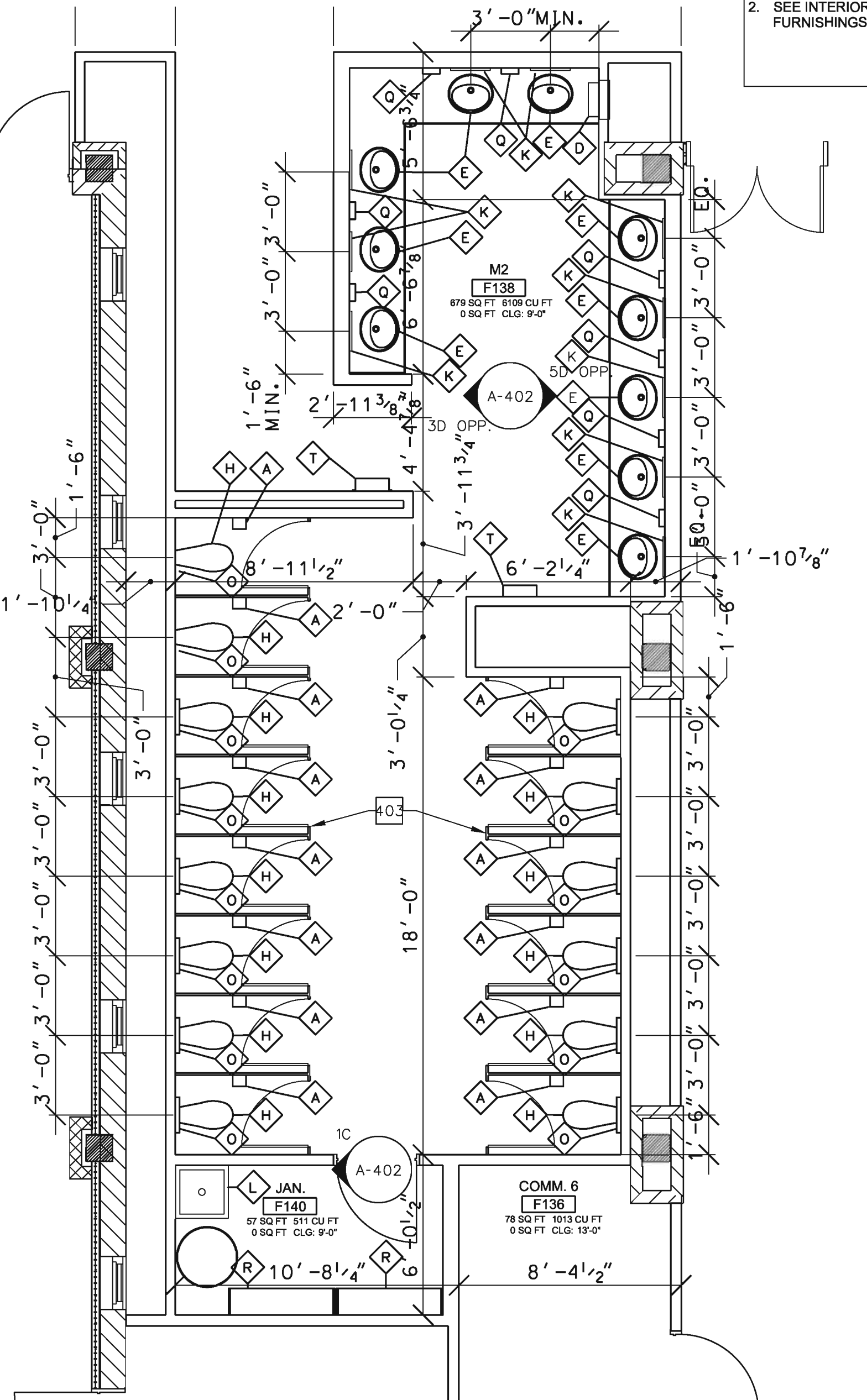
PLATE REFERENCE NUMBER  
**A-401**  
 SHEET 43 of 149



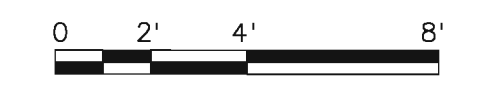
1A ENLARGED PLAN  
A-401 1/4" = 1'-0"



3A ENLARGED PLAN  
A-401 1/4" = 1'-0"

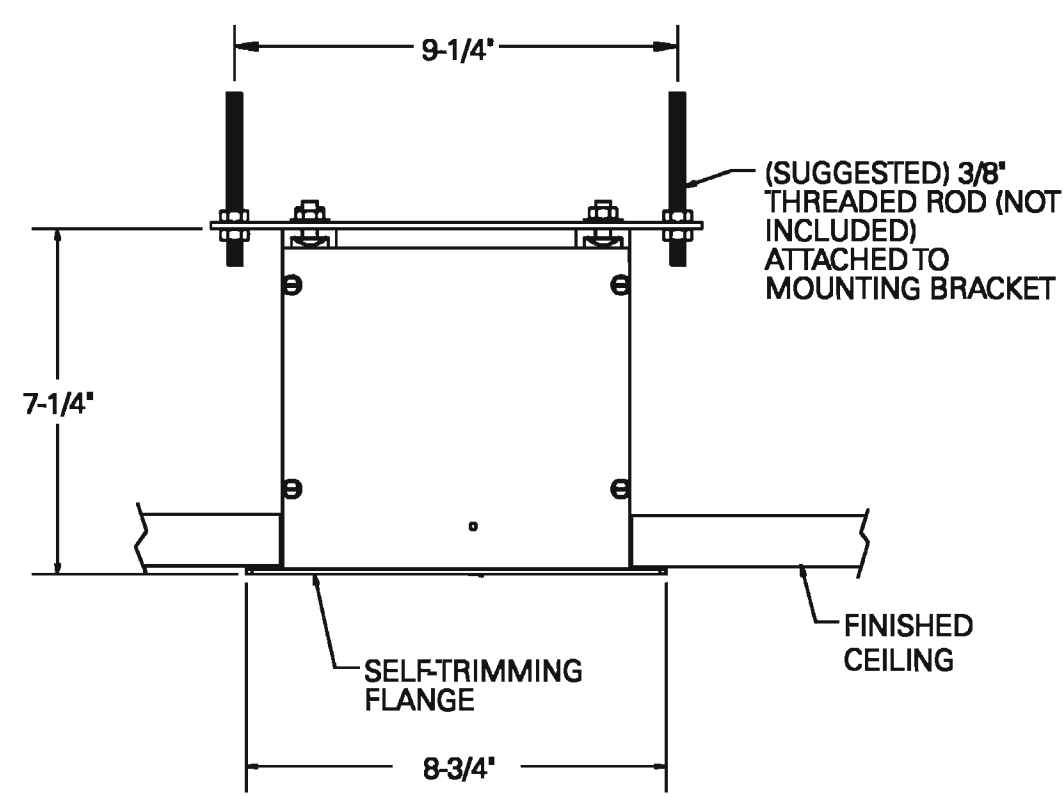


4A ENLARGED PLAN  
A-401 1/4" = 1'-0"

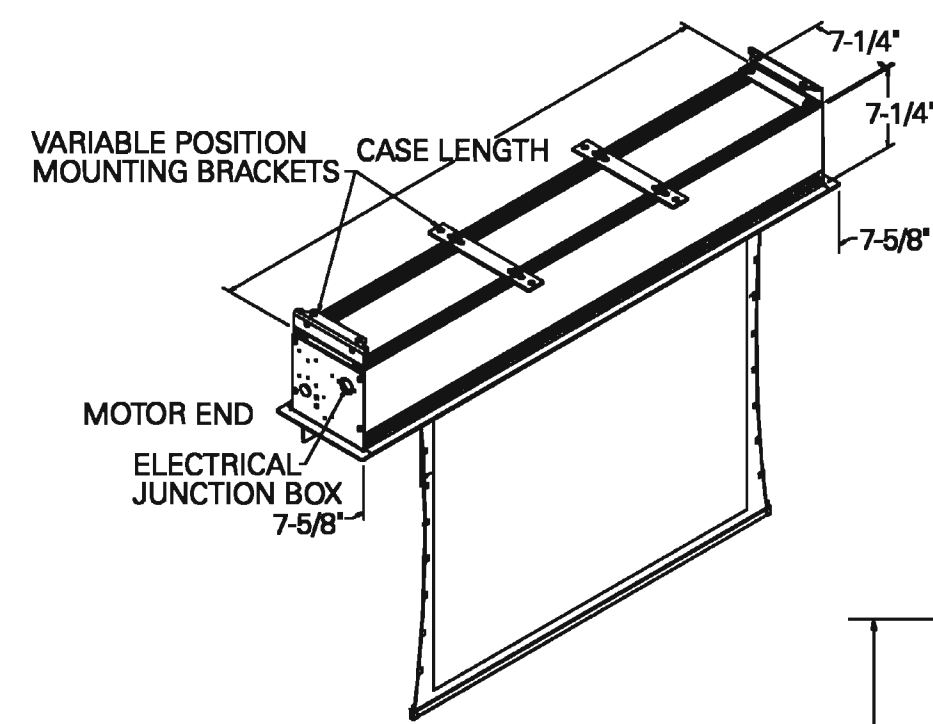


\$\$\$\$\$  
 \$\$\$SYTIME\$\$\$  
 \$\$\$SERNAME\$\$\$

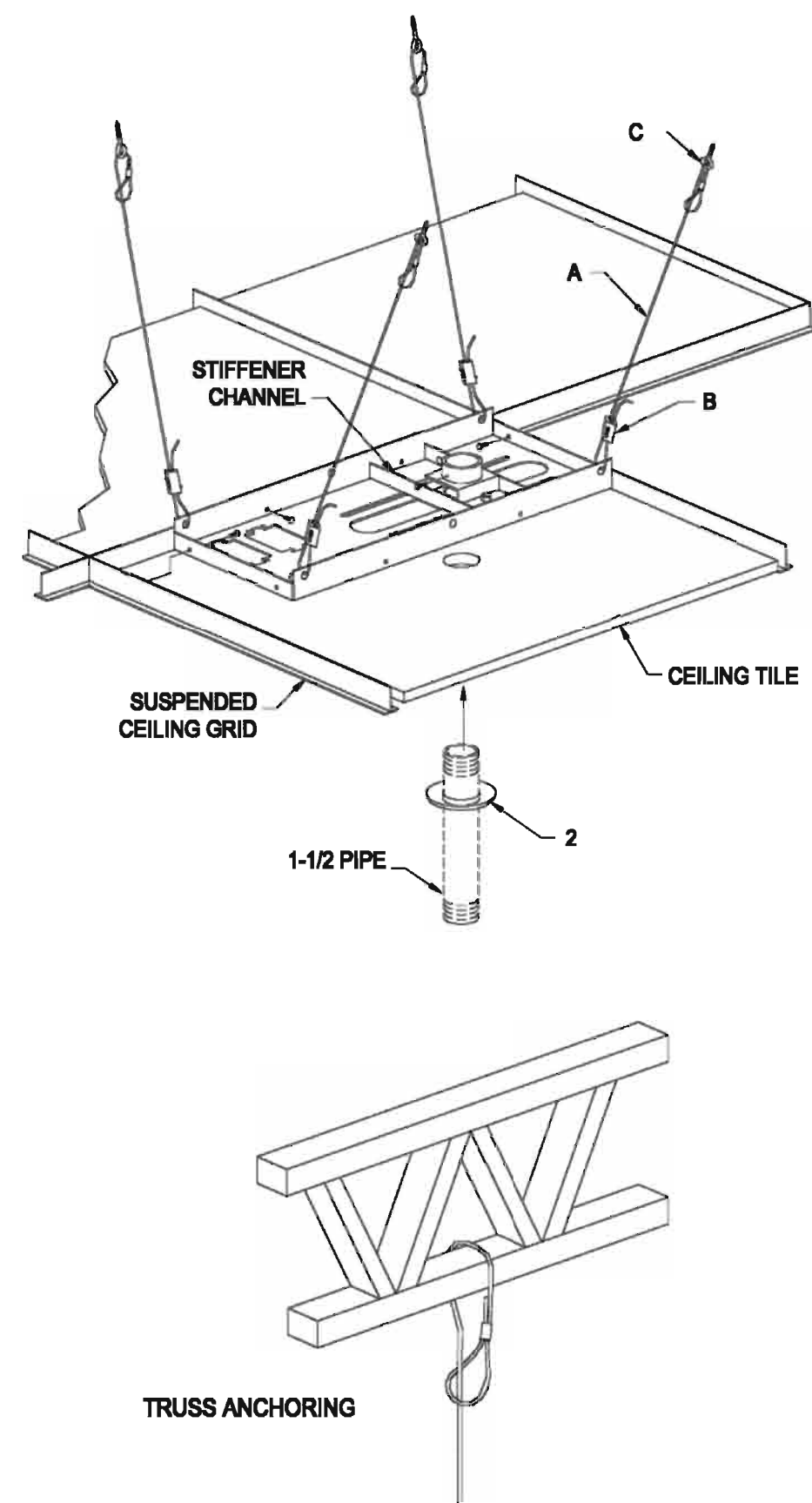




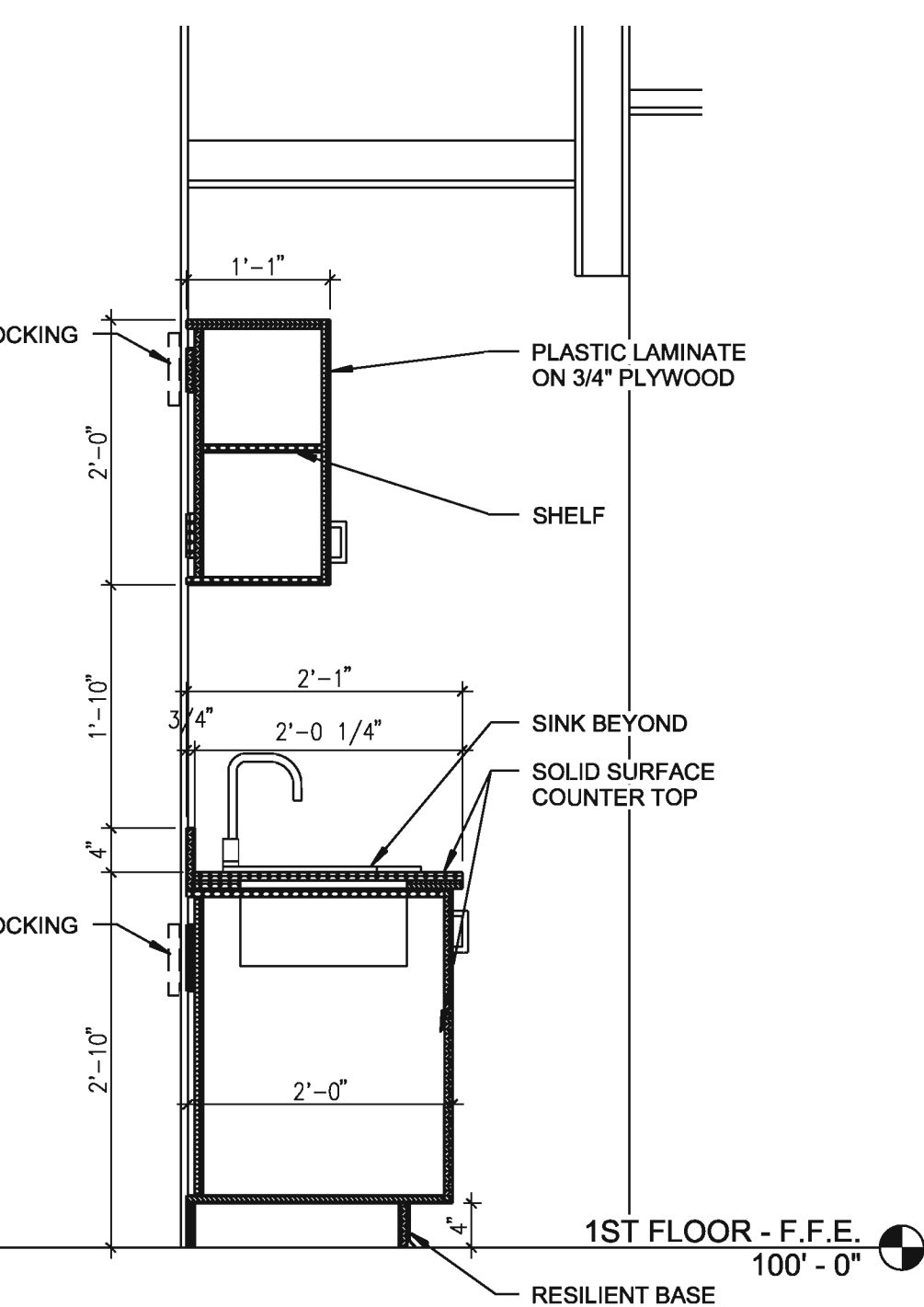
**1C PROJECTOR SCREEN MOUNT DETAIL**  
A-403 3\"/>



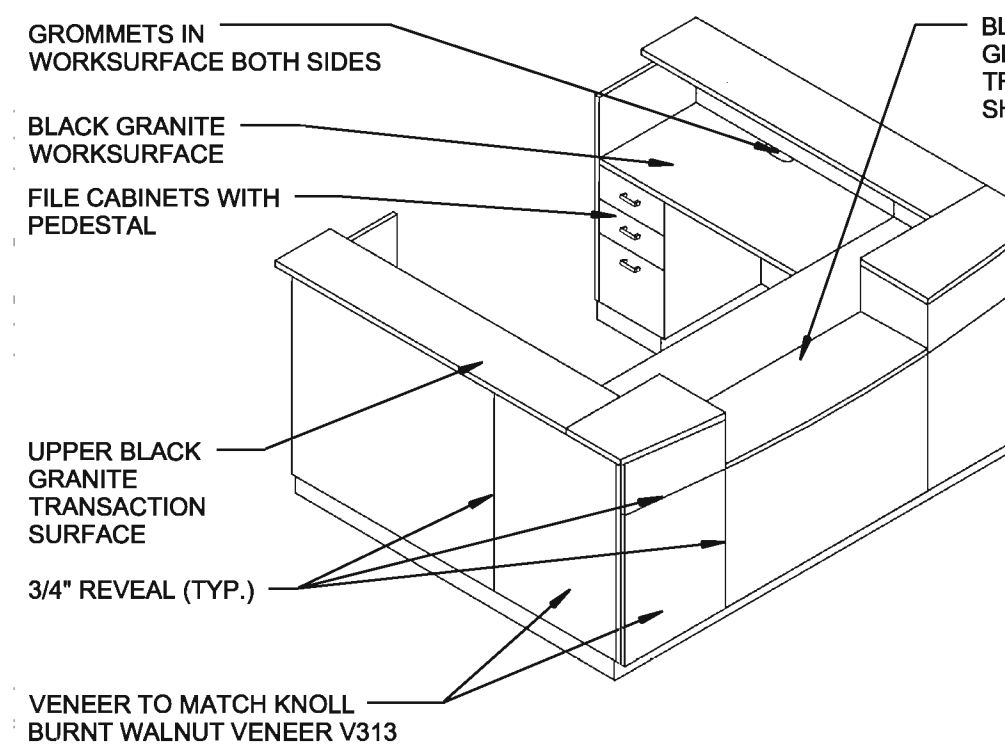
**1A PROJECTOR MOUNT DETAIL**  
A-403 3\"/>



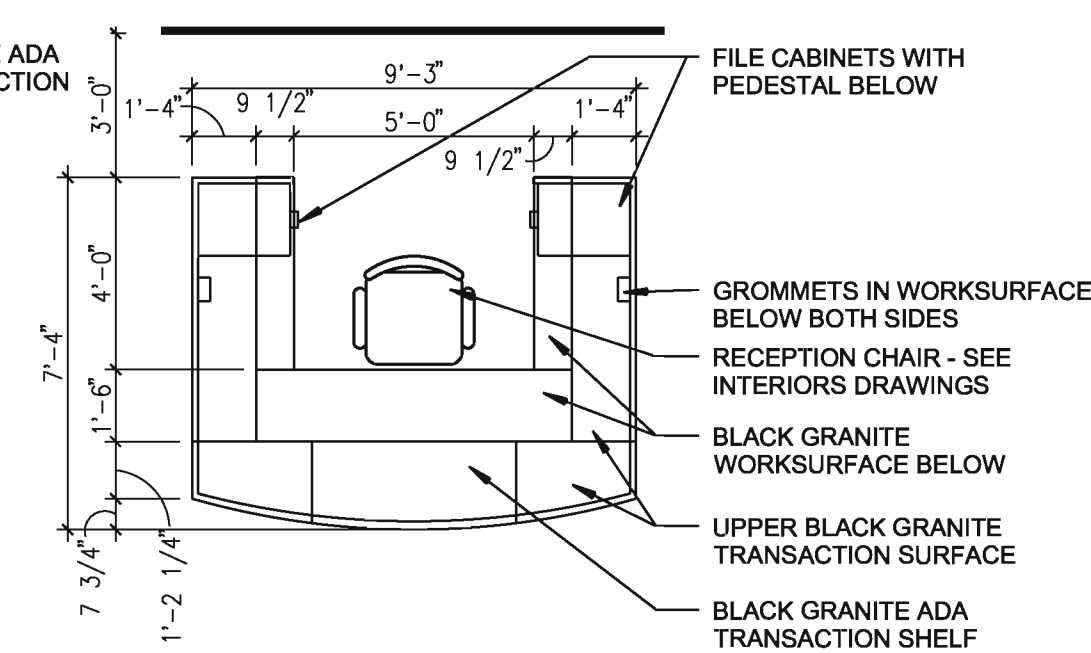
**2C RECEPTION COUNTER ISO**  
A-403 1/2\"/>



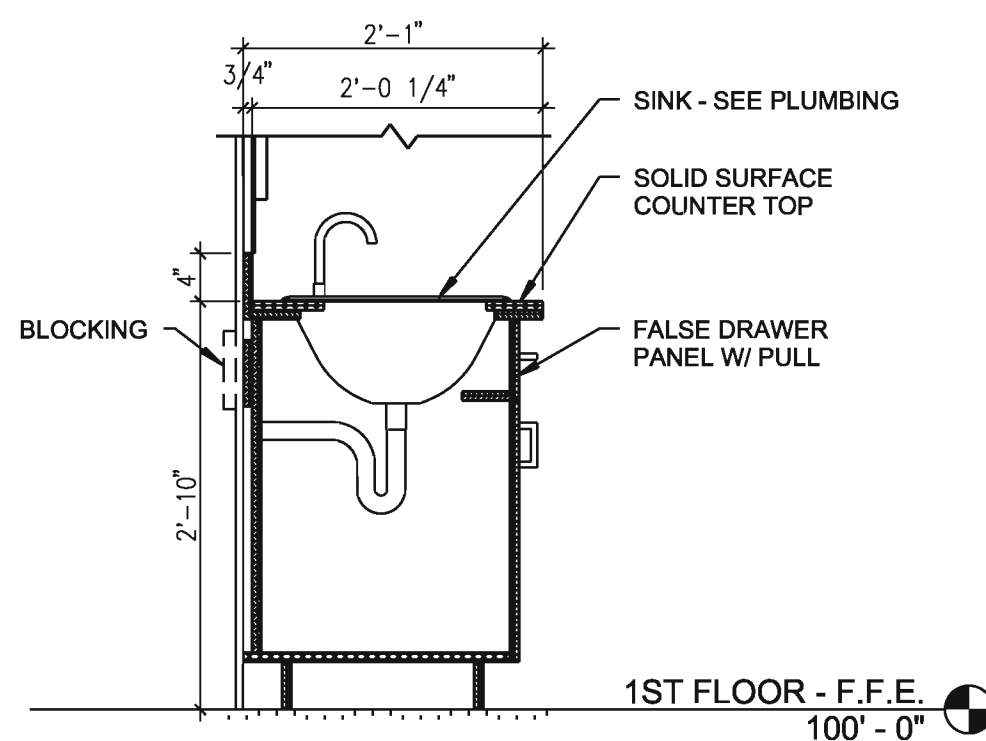
**2A CASEWORK DETAIL**  
A-403 3/4\"/>



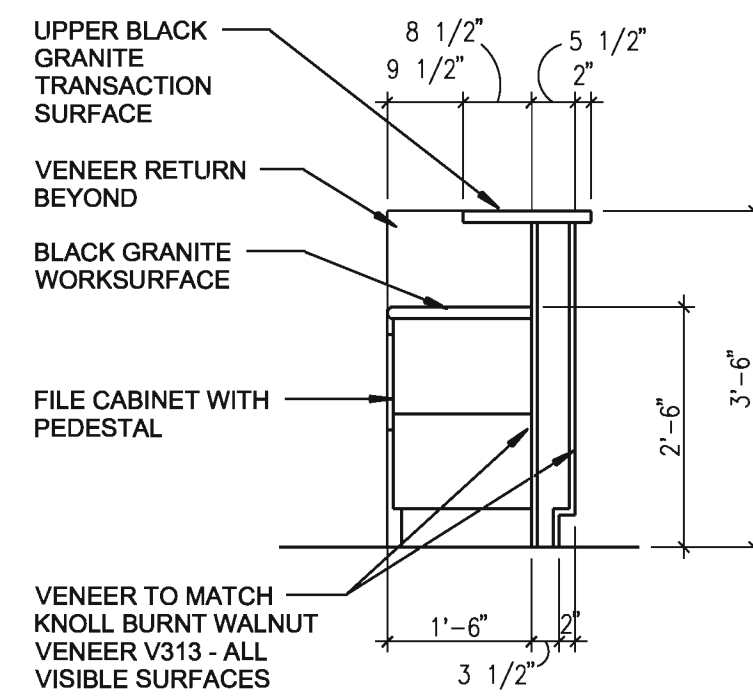
**2D RECEPTION COUNTER SECTION**  
A-403 1/2\"/>



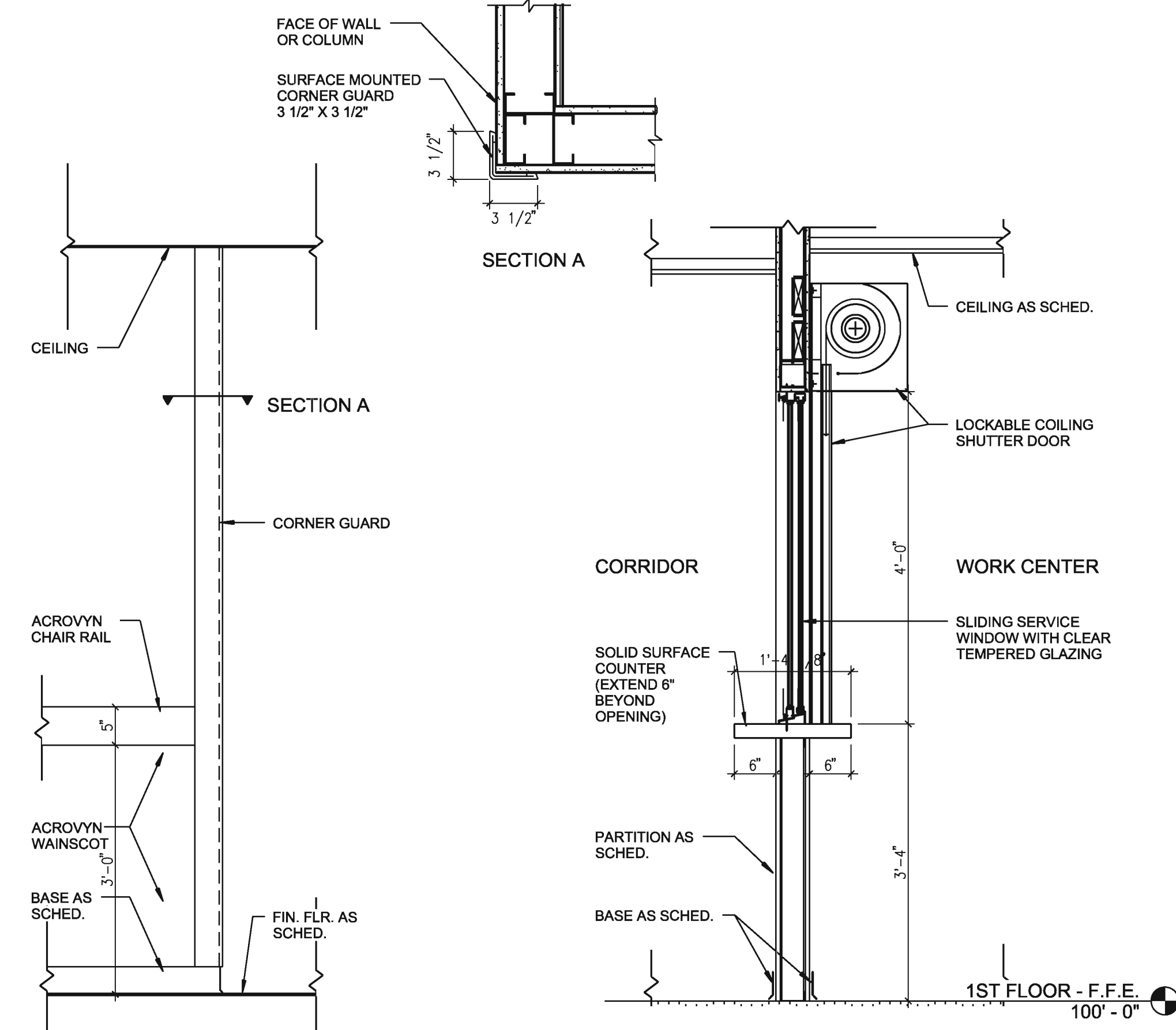
**3C ENLARGED RECEPTION COUNTER PLAN**  
A-403 1/4\"/>



**3A CASEWORK DETAIL**  
A-403 3/4\"/>

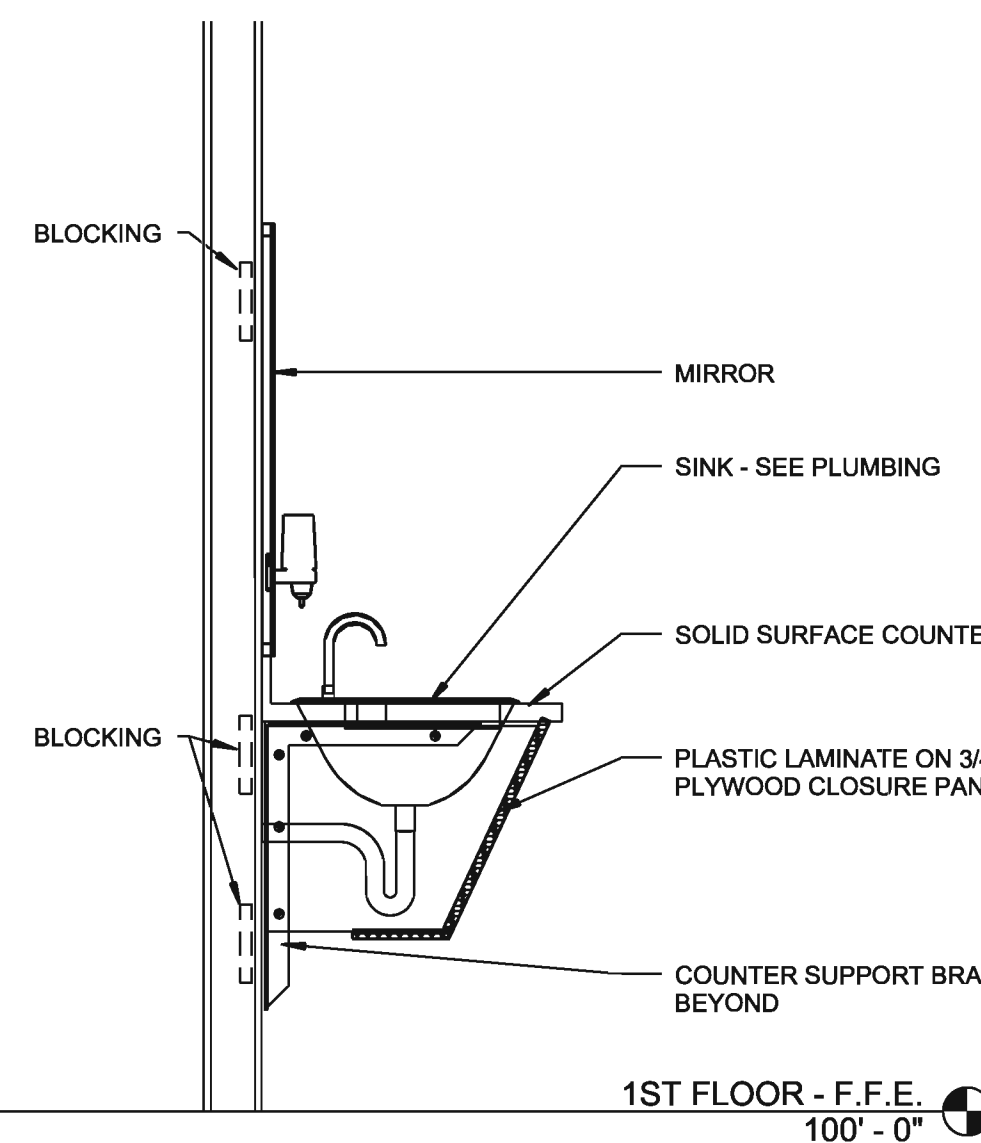


**3D RECEPTION COUNTER SECTION**  
A-403 1/2\"/>

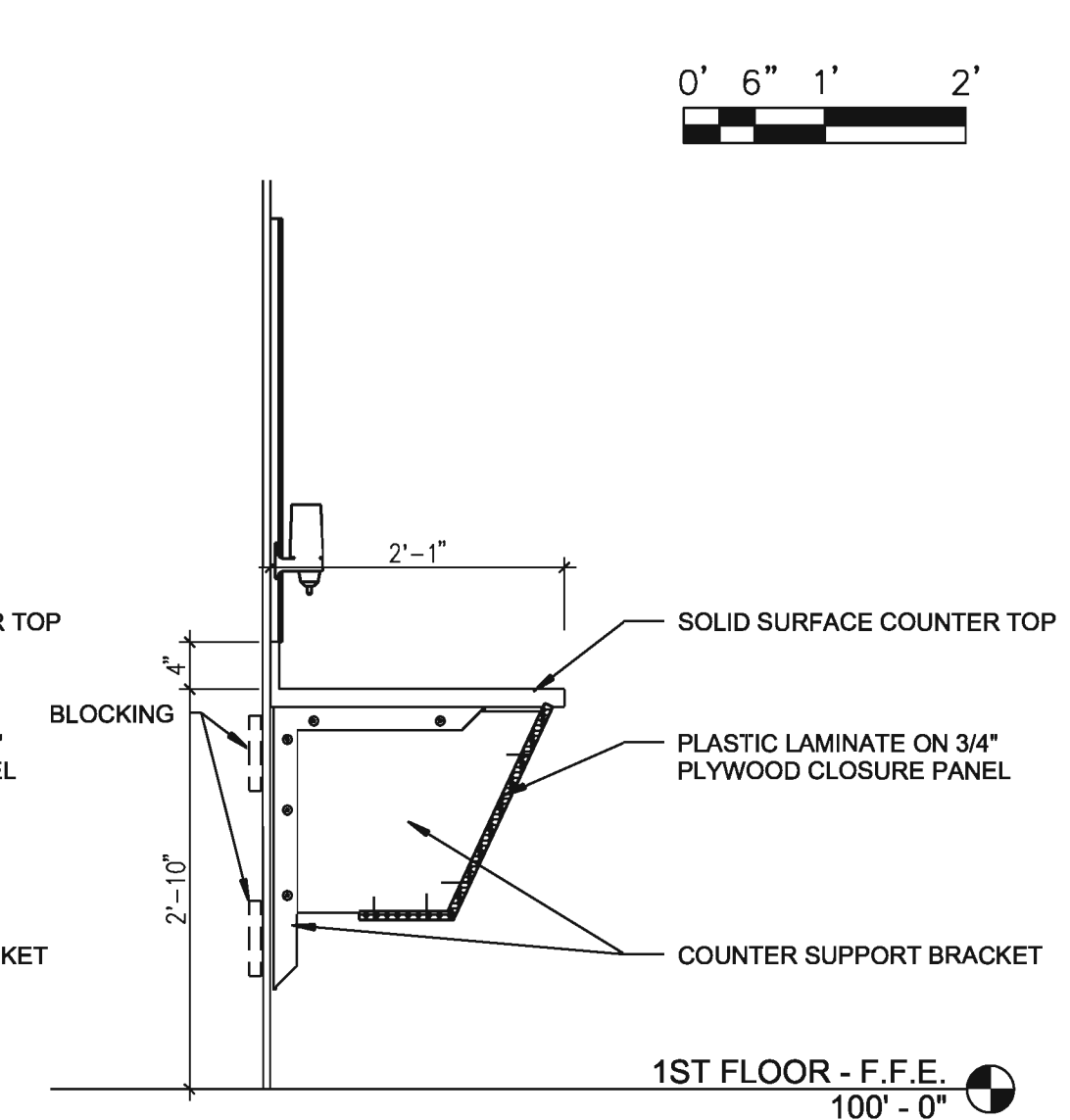


**4B TYP. CORNER GUARD & CHAIR RAIL DETAIL**  
A-403 3/4\"/>

**5B SERVICE WINDOW DETAIL**  
A-403 3/4\"/>



**4A LAV & COUNTER DETAIL**  
A-403 3/4\"/>



**5A LAV COUNTER DETAIL**  
A-403 3/4\"/>

US ARMY CORPS OF ENGINEERS SAVANNAH

DATE: 06 JULY 2011  
 SOLICITATION NO.: WZS2010030  
 WORK PACKAGE: WZS2010030-001  
 CATEGORY CODE: XX19XX  
 FILE NAME: 22\"/>

DESIGNED BY: WAW  
 CHECKED BY: WAW  
 SUBMITTED BY: WAW  
 FILE NAME: 22\"/>

U.S. ARMY ENGINEER DISTRICT SAVANNAH DISTRICT  
 WOODHART - KZF  
 1000 North 1st Street, Suite 100  
 Savannah, Georgia 31404  
 Tel: (770) 391-6000  
 Fax: (770) 391-6001  
 www.usace.army.mil

QUAD DFAC AND STARSHIP RENOVATIONS  
**BUILDING 5500 - CASEWORK DETAILS**

PLATE REFERENCE NUMBER  
**A-403**  
 SHEET 45 of 189

\$\$\$DGN\$SPEC\$\$  
 \$\$\$SYSTEMS\$\$\$  
 \$\$\$USER\$NAME\$\$\$





1

2

3

4

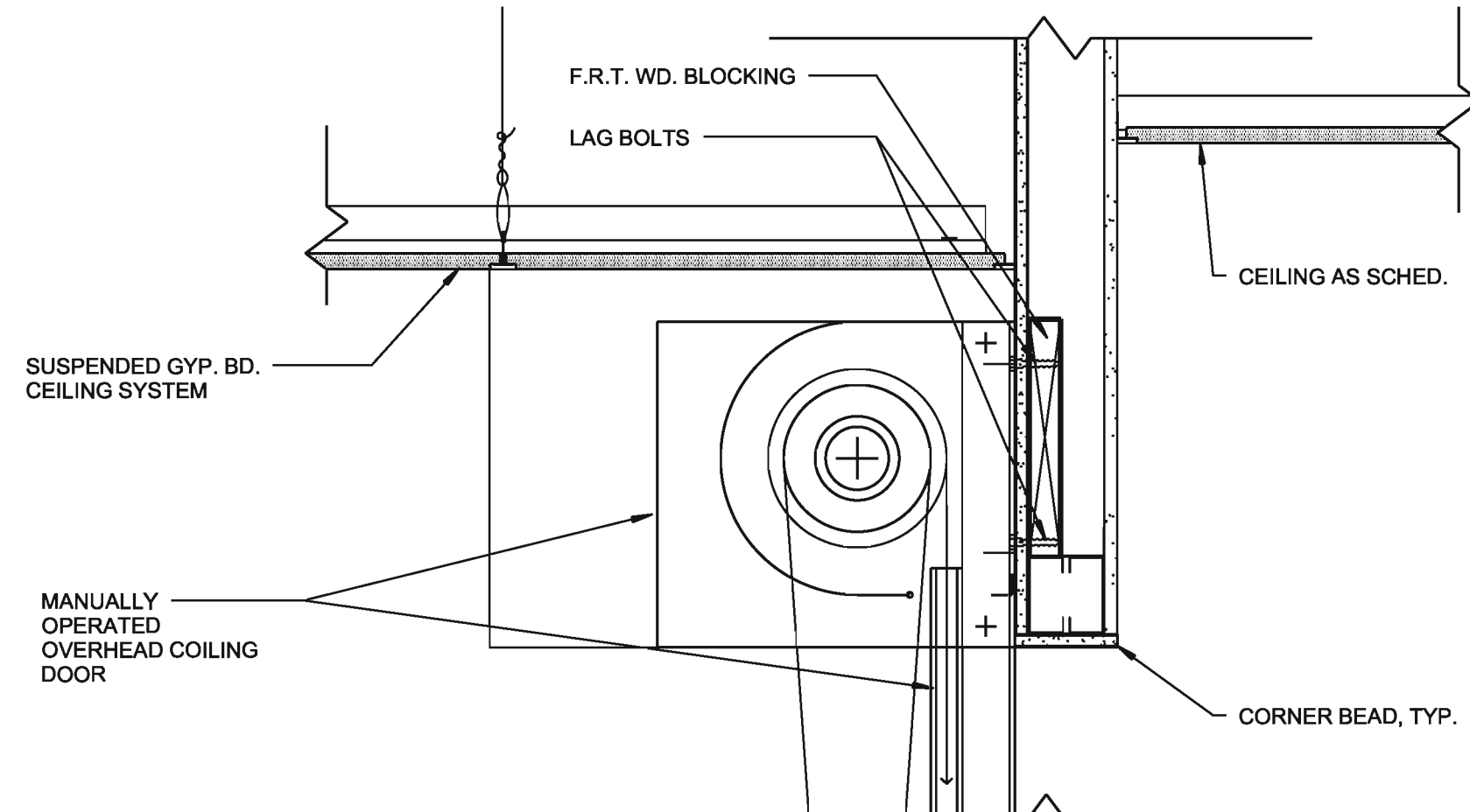
5

D

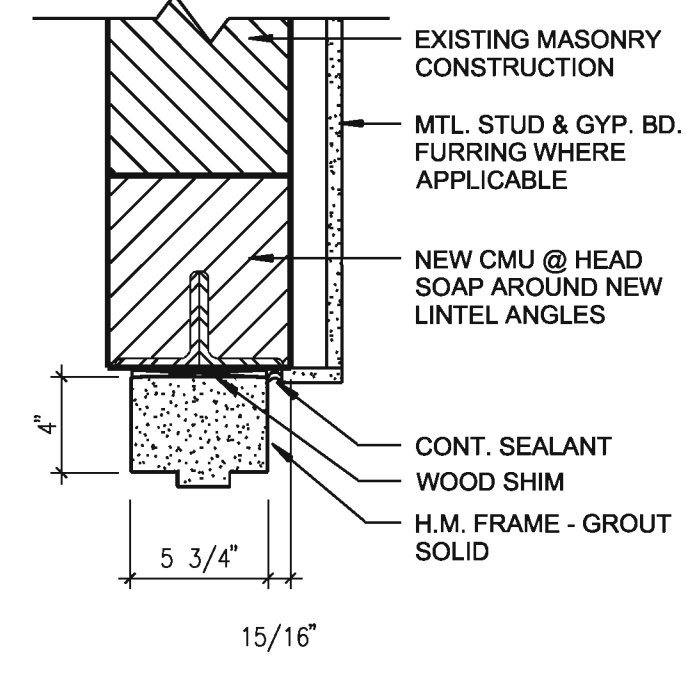
C

B

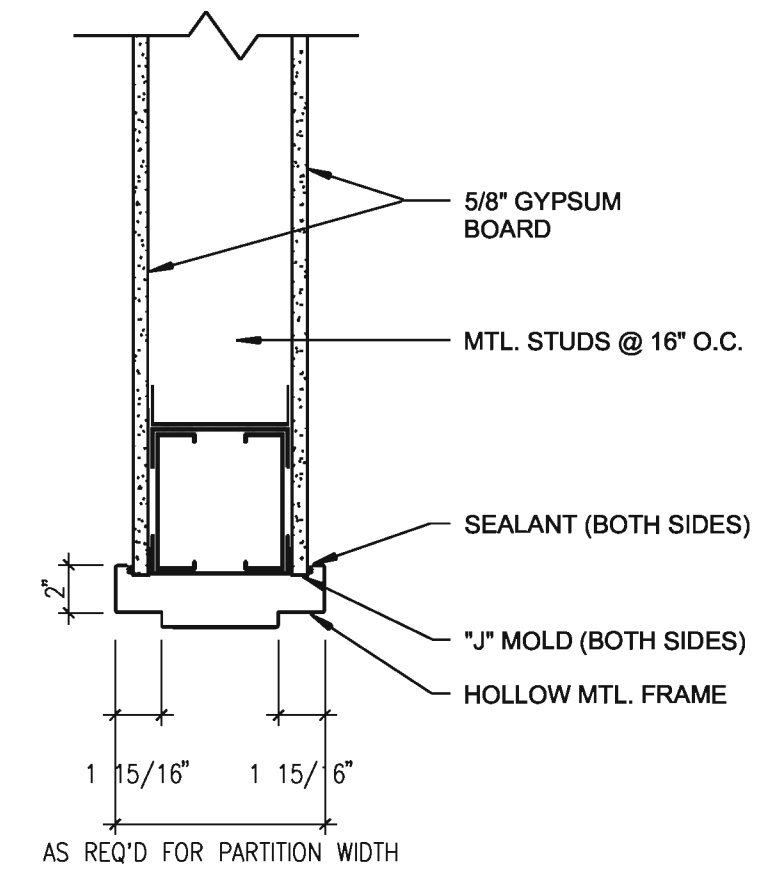
A



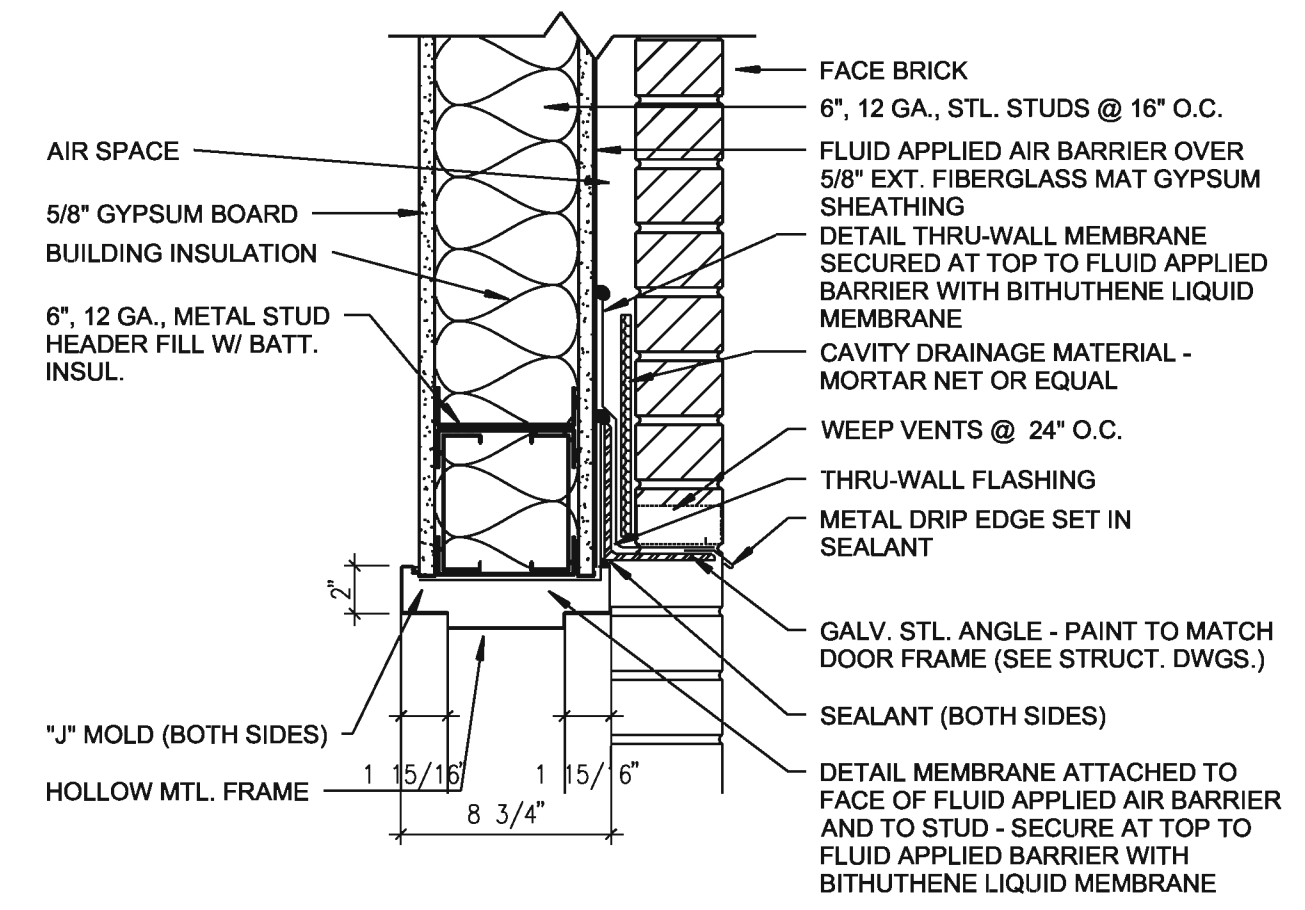
**1D COILING DOOR HEAD DETAIL**  
A-503 1/2" = 1'-0"



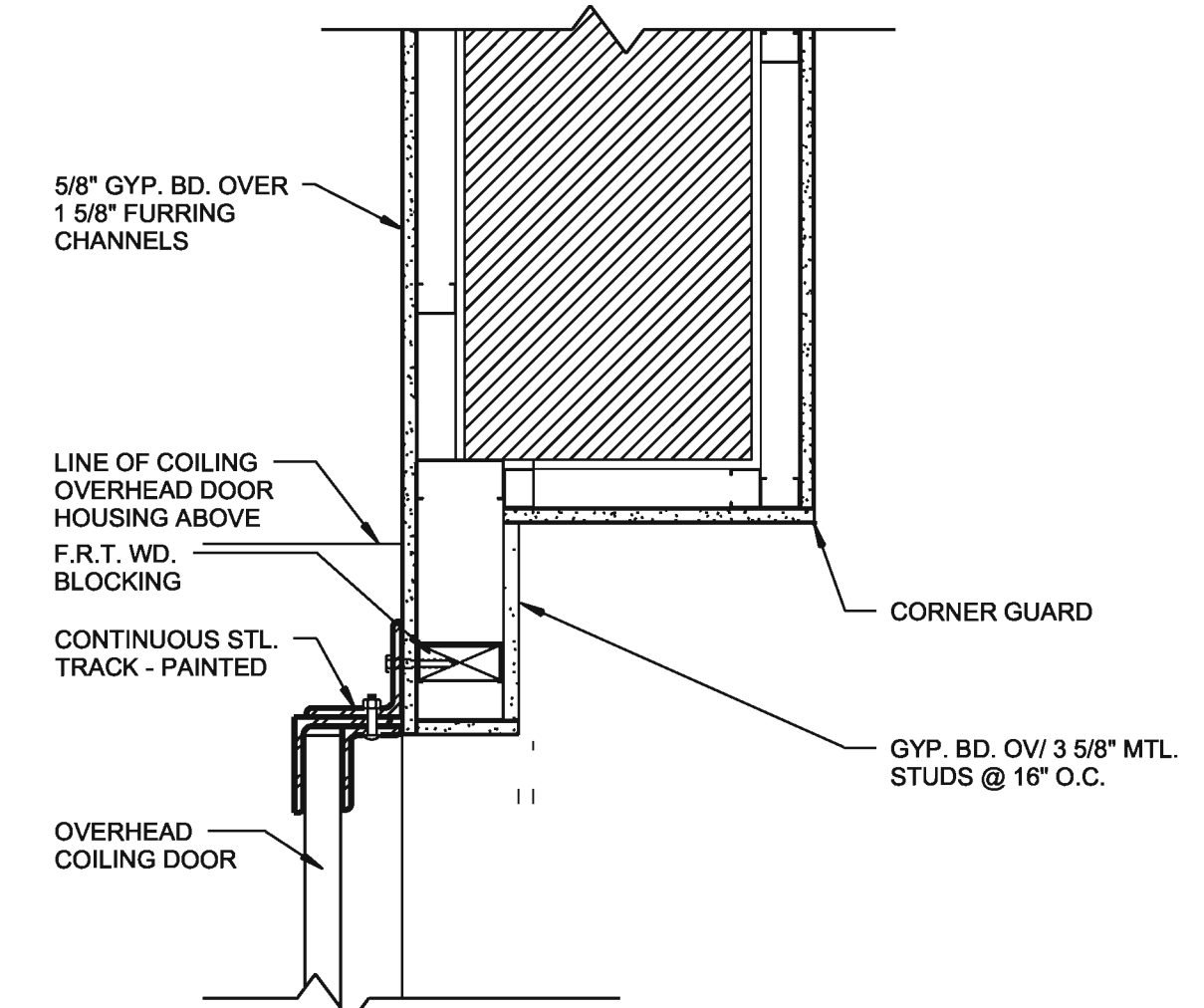
**3D HEAD DETAIL**  
A-503 1/2" = 1'-0"



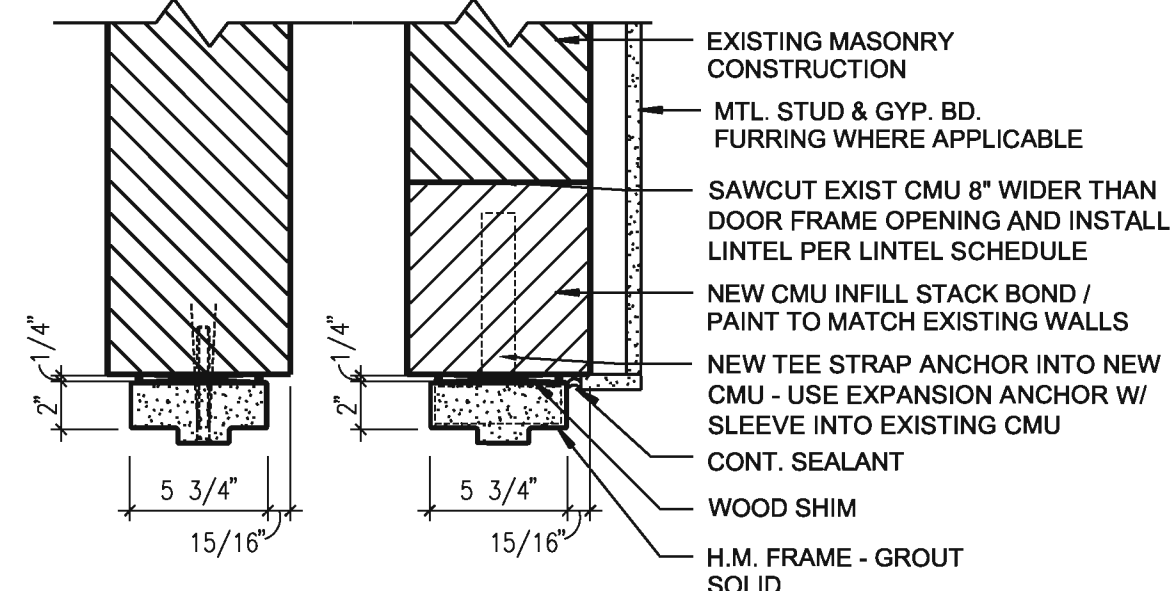
**4D HEAD DETAIL**  
A-503 1/2" = 1'-0"



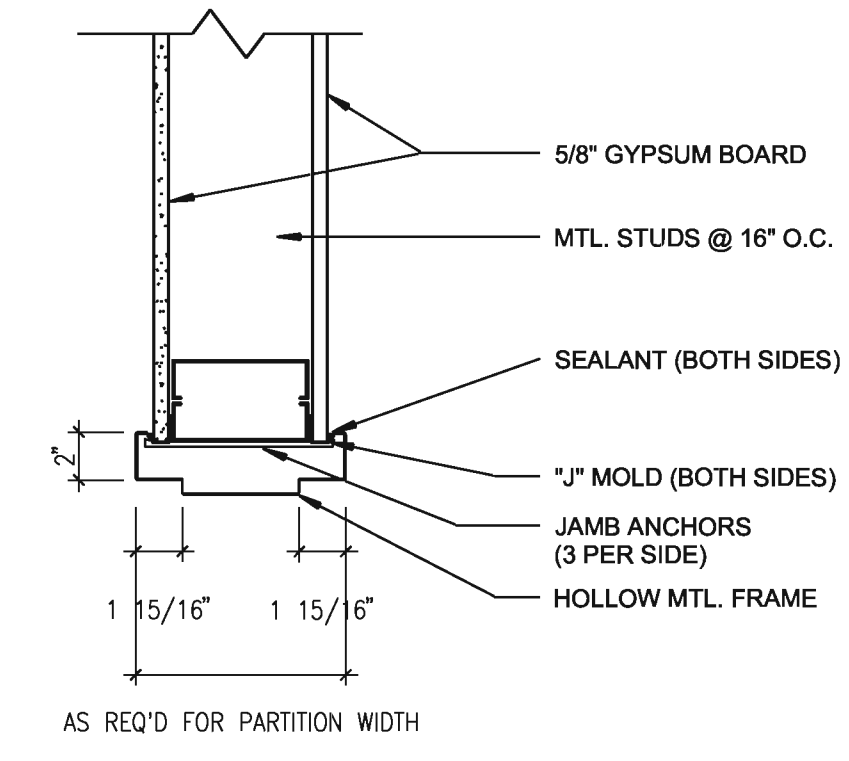
**5D HEAD DETAIL**  
A-503 1/2" = 1'-0"



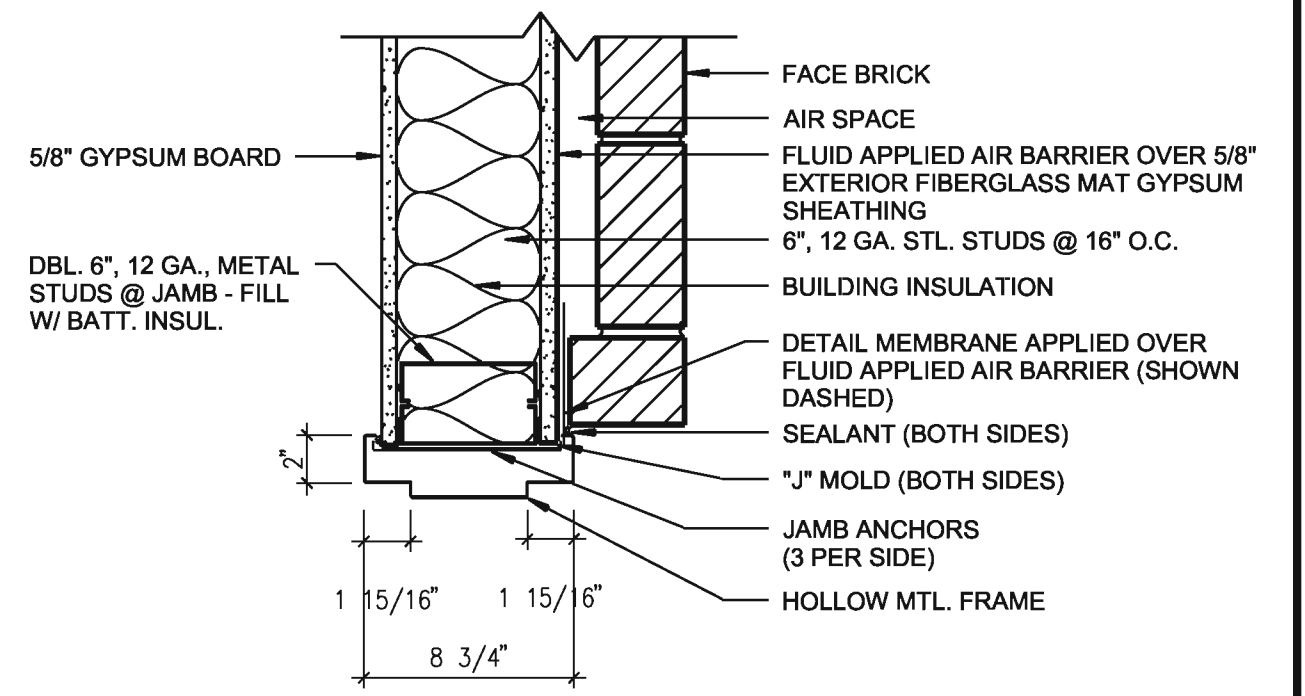
**1B COILING DOOR JAMB DETAIL**  
A-503 1/2" = 1'-0"



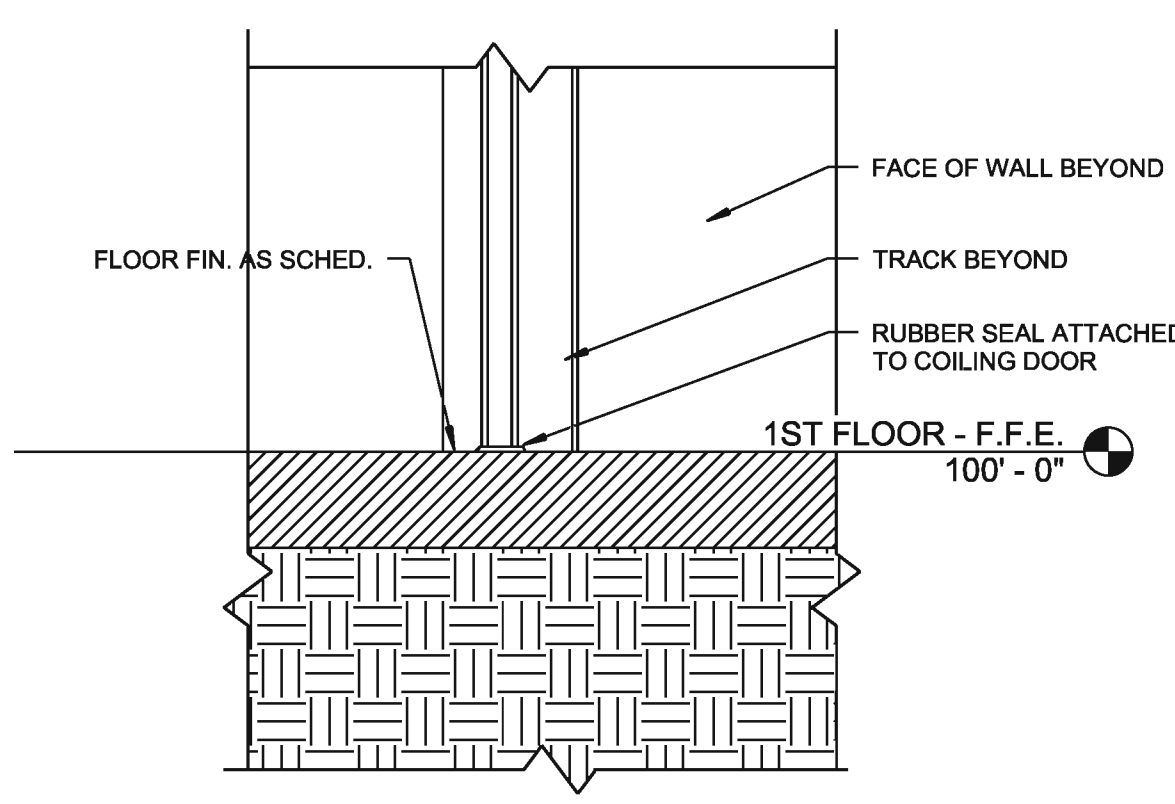
**3C JAMB DETAIL**  
A-503 1/2" = 1'-0"



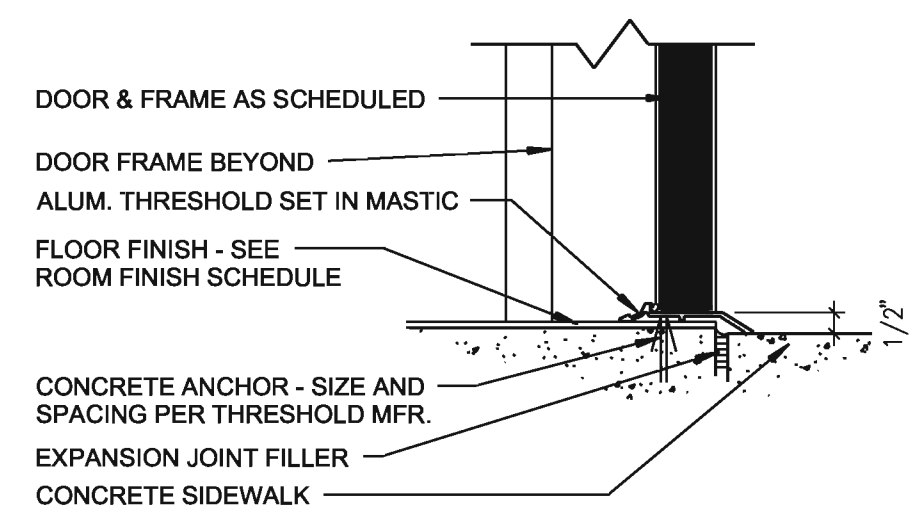
**4C JAMB DETAIL**  
A-503 1/2" = 1'-0"



**5C JAMB DETAIL**  
A-503 1/2" = 1'-0"



**1A COILING DOOR SILL DETAIL**  
A-503 1/2" = 1'-0"



**5B THRESHOLD DETAIL**  
A-503 1/2" = 1'-0"



NO.	DATE	BY	DESCRIPTION



DESIGNED BY: WEB	DATE: 06 July 2011	SOLICITATION NO.: WAT	PROJECT NO.: WAT	FILE NAME: WAT	SIZE: 22"x34"	PLOT SCALE: AS NOTED	PLOT DATE: 06/30/2011
DWN BY: WAT	DATE: 06/30/2011	CONTRACT NO.: WAT	PROJECT NO.: WAT	FILE NAME: WAT	SIZE: 22"x34"	PLOT SCALE: AS NOTED	PLOT DATE: 06/30/2011
DESIGNED BY: WAT	DATE: 06/30/2011	CONTRACT NO.: WAT	PROJECT NO.: WAT	FILE NAME: WAT	SIZE: 22"x34"	PLOT SCALE: AS NOTED	PLOT DATE: 06/30/2011
DWN BY: WAT	DATE: 06/30/2011	CONTRACT NO.: WAT	PROJECT NO.: WAT	FILE NAME: WAT	SIZE: 22"x34"	PLOT SCALE: AS NOTED	PLOT DATE: 06/30/2011

U. S. ARMY ENGINEER DISTRICT  
CORPS OF ENGINEERS  
SAVANNAH DISTRICT

Woodport - KZT  
Construction

QUAD DFAC AND STARSHIP RENOVATIONS  
**BUILDING 5500**  
**DOOR DETAILS**

PLATE  
REFERENCE  
NUMBER  
**A-503**  
SHEET 48 of 149

\$\$\$\$\$DN\$SPEC\$\$  
\$\$\$\$\$SYTIME\$\$  
\$\$\$\$\$USERNAME\$\$



