

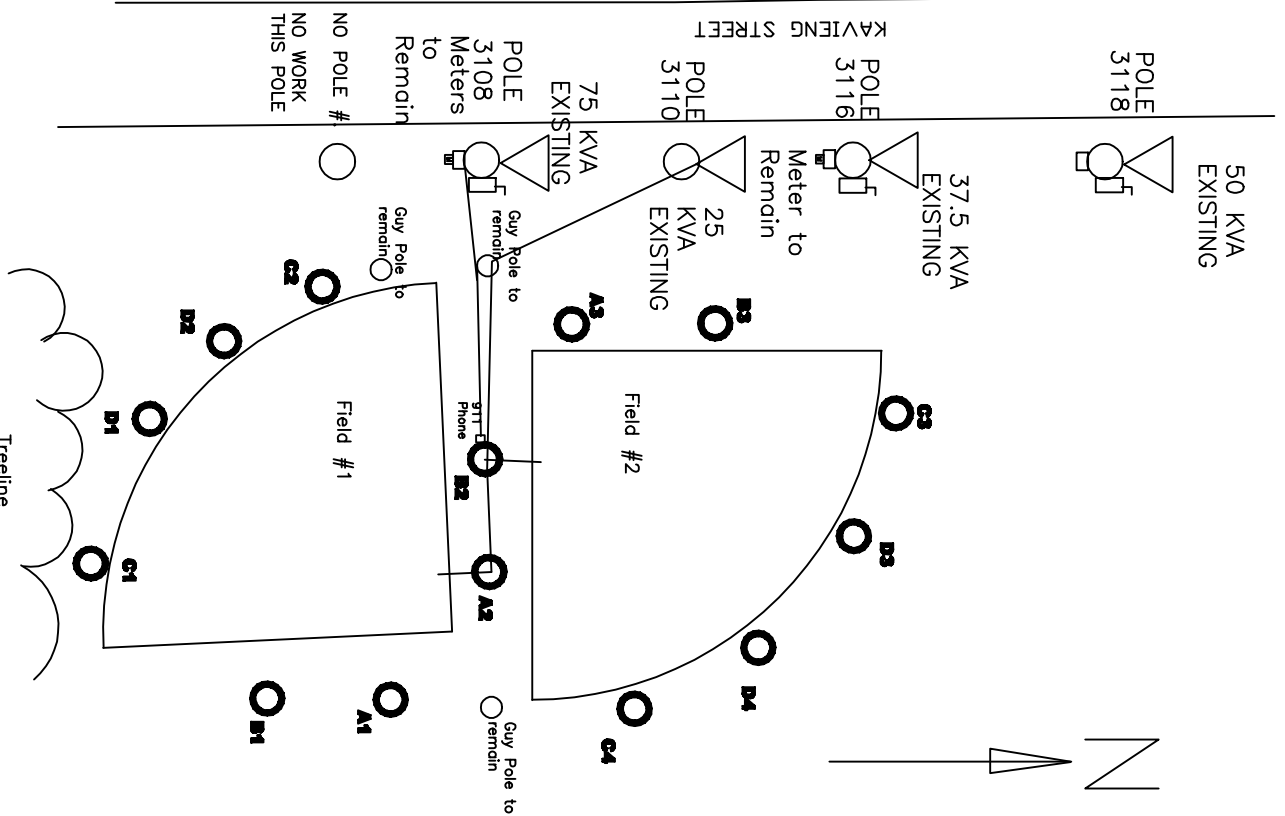
Pole 3118: Existing 50 KVA transformer and wiring to tennis courts to remain, Remove conduit, weatherheads, meter, meter base, disconnect and wiring to field #2 outfield poles.

Pole 3116: Provide new 100 KVA, 7200 volt primary, 240/480 volt secondary oil filled pole mounted transformer. Reuse existing cutout and arrestor. Provide three new #2/0 copper conductors with #1 copper ground to existing meter. Reuse meter. Provide new 200 amp 600 volt lighting control in NEMA 3R housing.

Pole 3110: Existing 25 KVA transformer and wiring to remain, This is 120 volt feed to the score boards. Re-attach the existing conductor to new poles, provide new conduit down poles A2 & B2

Pole 3108: Provide new 100 KVA transformer. Reuse cutout, arrestor and meter. Replace cables from transformer to meter with three #2/0 copper cables with a #1 copper ground. Provide new 200 amp 600 volt lighting control in NEMA 3R housing.

At pole C1 trim tree branches 15 feet from pole.



SKETCH-1  
FIELD LIGHTING