

CODE SUMMARY

NOTE

THE BUILDING AND OCCUPANCIES ARE EXISTING. THE BUILDING APPEARS TO HAVE BEEN DESIGNED IN ACCORDANCE WITH MIL-HDBK-1008 WHICH REQUIRED THE USE OF THE UNIFORM BUILDING CODE (UBC) FOR HEIGHT AND AREA CALCULATIONS. THE OVERALL BUILDING WAS SUBDIVIDED INTO FOUR BUILDINGS USING 2-HOUR FIRE RESISTANCE RATED AREA SEPARATION WALLS IN ACCORDANCE WITH THE UBC. NO CHANGE IN HEIGHT/AREA IS PROPOSED, THEREFORE, THE EXISTING BUILDING SEPARATION WILL REMAIN.

THIS CODE SUMMARY IS APPLICABLE TO PORTIONS OF THE FIRST FLOOR ONLY.
NOTE: ALLOWABLE FLOOR AREA SUMMARY PROVIDED IN DESIGN ANALYSIS VOLUME 6 OF 7.

APPLICABLE CODES AND STANDARDS

UNIFIED FACILITIES CRITERIA (UFC): 1-200-01, GENERAL BUILDING REQUIREMENTS, JULY 2002.
UNIFIED FACILITIES CRITERIA (UFC): 3-600-01, DESIGN: FIRE PROTECTION ENGINEERING FOR FACILITIES, 26 SEPTEMBER 2006, CHANGE 1.
UNIFIED FACILITIES CRITERIA (UFC): 4-010-01, DOD MINIMUM ANTITERRORISM STANDARDS FOR BUILDINGS, 8 OCTOBER 2003.
UNIFIED FACILITIES CRITERIA (UFC): 4-021-01, DESIGN AND O&M: MASS NOTIFICATION SYSTEMS, 9 APRIL 2008.
INTERNATIONAL BUILDING CODE (IBC) 2009 FOR CONSTRUCTION TYPE AND FIRE RESISTANCE RATING, OCCUPANCY SEPARATION, ALLOWABLE FLOOR AREA, BUILDING HEIGHT LIMITATIONS AND BUILDING SEPARATION DISTANCE REQUIREMENTS, EXCEPT AS MODIFIED BY UFC 3-600-01.
NATIONAL FIRE PROTECTION ASSOCIATION (NFPA) 10, STANDARD FOR PORTABLE FIRE EXTINGUISHERS, 2007.
NATIONAL FIRE PROTECTION ASSOCIATION (NFPA) 13, STANDARD FOR THE INSTALLATION OF SPRINKLER SYSTEMS, 2010.
NATIONAL FIRE PROTECTION ASSOCIATION (NFPA) 24, STANDARD FOR THE INSTALLATION OF PRIVATE FIRE SERVICE MAINS AND THEIR APPURTENANCES, 2010.
NATIONAL FIRE PROTECTION ASSOCIATION (NFPA) 70, NATIONAL ELECTRICAL CODE®, 2008.
NATIONAL FIRE PROTECTION ASSOCIATION (NFPA) 72, NATIONAL FIRE ALARM AND SIGNALING CODE®, 2010.
NATIONAL FIRE PROTECTION ASSOCIATION (NFPA) 90A, STANDARD FOR THE INSTALLATION OF AIR-CONDITIONING AND VENTILATING SYSTEMS, 2008.
NATIONAL FIRE PROTECTION ASSOCIATION (NFPA) 101, LIFE SAFETY CODE®, 2009, FOR SEPARATION OF HAZARDS, BUILDING EGRESS AND LIFE SAFETY AND APPLICABLE CRITERIA IN UFC 3-600-01.
ADA AND ABA ACCESSIBILITY GUIDELINES FOR BUILDINGS AND FACILITIES (FEDERAL REGISTER JULY 23, 2004) REPLACES UFAS AND ADAAG CRITERIA. [AMERICANS WITH DISABILITIES ACT (ADA) AND ARCHITECTURAL BARRIERS ACT (ABA)]

OCCUPANCY CLASSIFICATION (IBC SECTIONS 310.1/304.1, NFPA 101®, CHAPTERS 28/38)
RESIDENTIAL, GROUP R2 (NOT IN THIS CONTRACT)
BUSINESS, GROUP B - CLASSROOMS LESS THAN 50 PERSONS
ASSEMBLY, GROUP A-3 - CLASSROOMS 50 PERSONS OR MORE

OCCUPANCY SEPARATION (IBC TABLE 503)
B TO A-3: 1-HOUR FIRE RESISTANCE RATED

CONSTRUCTION TYPE (IBC TABLE 601)
TYPE II-B (EXISTING)

SEPARATION FROM HAZARDS (NFPA 101®, SECTIONS 38.3.2 AND 8.7)

MECHANICAL ROOMS:
REQUIRED: SMOKE PARTITION WITH SPRINKLERS
PROVIDED: SMOKE PARTITION WITH SPRINKLERS
STORAGE ROOMS:
REQUIRED: SMOKE PARTITION WITH SPRINKLERS
PROVIDED: SMOKE PARTITION WITH SPRINKLERS

FIRE-RESISTANCE REQUIREMENTS (IBC TABLE 601)

EXTERIOR BEARING WALLS:
REQUIRED: NONE (> 30 FT. SEPARATION)
PROVIDED: NONE

INTERIOR BEARING WALLS:
REQUIRED: NONE
PROVIDED: NONE

STRUCTURAL FRAME:
REQUIRED: NONE
PROVIDED: NONE

SHAFT ENCLOSURES:
REQUIRED: NONE
PROVIDED: NONE

FLOORS AND FLOOR/CEILINGS:
REQUIRED: NONE
PROVIDED: NONE

ROOF AND ROOF/CEILING:
REQUIRED: NONE
PROVIDED: NONE

FIRE AND/OR SMOKE DAMPERS (NFPA 101® SECTION 9.2 AND NFPA 90A SECTION 5.3)

FIRE DAMPERS:
2-HOUR FIRE BARRIERS REQUIRED
1-HOUR FIRE BARRIERS REQUIRED ONLY ON PENETRATIONS WHERE A DUCT TERMINATES AT A RATED WALL WITH A GRILLE OR AT AN AIR TRANSFER OPENING
SMOKE DAMPERS: REQUIRED ONLY ON PENETRATIONS WHERE A DUCT TERMINATES AT A SMOKE PARTITION WITH A GRILLE OR AT AN AIR TRANSFER OPENING
RADIATION DAMPERS: NOT REQUIRED (NO FLOOR/CEILING ASSEMBLIES)

INTERIOR FINISHES (NFPA 101®, SECTION 12.3.3)
EXIT ENCLOSURES: CLASS A
EXIT ACCESS CORRIDORS: CLASS A
ROOMS & ENCLOSED SPACES: CLASS C
FLOOR FINISH: CLASS II
SPECIFIC WALL AND FLOOR FINISHES WILL BE SHOWN ON THE INTERIOR FINISH SCHEDULE.

MEANS OF EGRESS
MEANS OF EGRESS SHALL BE IN ACCORDANCE WITH NFPA 101® PER UFC 3-600-01 SECTION 2-5.1.

SEPARATION OF MEANS OF EGRESS
EXIT STAIRS: (NFPA 101®, SECTION 7.1.3.2)
WALLS: 1-HOUR FIRE RESISTANCE RATING
DOORS: 1-HOUR FIRE RESISTANCE RATING
CORRIDORS: (NFPA 101®, SECTION 38.3.6.1(3))
REQUIRED: NO FIRE RESISTANCE RATING

OCCUPANT LOAD (NFPA 101®, TABLE 7.3.1.2)
OFFICE/ADMINISTRATION: 1 PERSON / 100 GROSS SF
CLASSROOMS: 1 PERSON / 20 NET SF (OR NUMBER OF SEATS, WHICHEVER IS GREATER)
FIRST FLOOR: 1,281 PERSONS (CURRENT AREA OF WORK AS SHOWN ON THE DRAWINGS)
OFFICE/ADMINISTRATION: 241 PERSONS
CLASSROOMS: 1,040 PERSONS

NUMBER OF EXITS (NFPA 101®, SECTION 38.2.4)
FIRST FLOOR:
REQUIRED: 4

EGRESS CAPACITY (NFPA 101®, SECTIONS 38.2.3)
LEVEL SURFACES (FIRST FLOOR)
REQUIRED: 257 INCHES STAIRS

EGRESS WIDTH (NFPA 101®, SECTION 38.2.3)
CORRIDORS
MINIMUM REQUIRED: 44 INCHES STAIRS

COMMON PATH OF TRAVEL
BUSINESS, B OCCUPANCY (NFPA 101®, SECTION 38.2.5.3.1)
MAXIMUM PERMITTED: 100 FT.
PROVIDED: 58 FT.
ASSEMBLY, A-3 OCCUPANCY (NFPA 101®, SECTION 12.2.5.1.2)
MAXIMUM PERMITTED: 20 FT.
PROVIDED: 0 FT.

DEAD END CORRIDORS
BUSINESS, B OCCUPANCY (NFPA 101®, SECTION 38.2.5.2.1)
MAXIMUM PERMITTED: 50 FT.
PROVIDED: 0 FT.
ASSEMBLY, A-3 OCCUPANCY (NFPA 101®, SECTION 12.2.5.1.3)
MAXIMUM PERMITTED: 20 FT.
PROVIDED: 0 FT.

TRAVEL DISTANCE
BUSINESS, B OCCUPANCY (NFPA 101®, SECTION 38.2.6.1)
MAXIMUM PERMITTED: 300 FT.
PROVIDED: 95 FT.
ASSEMBLY, A-3 OCCUPANCY (NFPA 101®, SECTION 12.2.6.2(1))
MAXIMUM PERMITTED: 250 FT.
PROVIDED: 115 FT.

DISCHARGE FROM EXITS (NFPA 101®, SECTIONS 38.2.7 AND 7.7)
ALL EXITS WILL CONNECT TO AN EXIT DISCHARGE PATH THAT WILL TERMINATE AT A PUBLIC WAY.

ILLUMINATION OF MEANS OF EGRESS
ALL MEANS OF EGRESS, INCLUDING EXIT ACCESS CORRIDORS AND EXIT DISCHARGE WILL BE PROVIDED WITH EMERGENCY LIGHTING VIA BATTERY BACKUP. EMERGENCY LIGHTING WILL ALSO BE PROVIDED IN THE MECHANICAL ROOM VIA BATTERY BACKUP. AVERAGE ILLUMINATION WILL NOT BE LESS THAN 10 LUX (1-FOOT CANDLE) WITH A MINIMUM 1 LUX (0.1-FOOT CANDLE) AT ANY POINT. EMERGENCY LIGHTING WILL BE PROVIDED FOR A MINIMUM OF 1 1/2 HOURS IN THE EVENT OF INTERNAL POWER FAILURE.

MARKING OF MEANS OF EGRESS
EXIT SIGNS SHALL BE LED TYPE WITH BATTERY BACKUP AND SHALL BE PROVIDED AT ALL EXITS. EXIT SIGNS SHALL ALSO BE PROVIDED WHEREVER THE LOCATION OF THE EXIT IS NOT READILY APPARENT.

AUTOMATIC SPRINKLER SYSTEM
THE AREA OF WORK WILL BE PROTECTED THROUGHOUT BY A WET PIPE AUTOMATIC SPRINKLER SYSTEM, DESIGNED AND INSTALLED IN ACCORDANCE WITH UFC 3-600-01 AND NFPA 13. DUE TO THE AVAILABLE WATER SUPPLY, A FIRE PUMP WILL NOT BE PROVIDED.

FIRE ALARM AND MASS NOTIFICATION SYSTEM
THE EXISTING INTELLIGENT, ANALOG-ADDRESSABLE FIRE ALARM SYSTEM WILL BE EXPANDED FOR THE RENOVATED AREA. INITIATING DEVICES WILL CONSIST OF MANUAL PULL STATIONS AND SPRINKLER WATERFLOW SWITCHES. ALL SPRINKLER CONTROL VALVES IN THE AREA OF WORK WILL BE PROVIDED WITH VALVE TAMPER SWITCHES CONNECTED TO THE FIRE ALARM SYSTEM. NOTIFICATION APPLIANCES WILL CONSIST OF SPEAKERS AND STROBES. A NEW MASS NOTIFICATION SYSTEM WILL BE PROVIDED THROUGHOUT THE RENOVATED SPACE AND WILL BE SIZED FOR FUTURE EXPANSION.



US ARMY CORPS OF ENGINEERS SAVANNAH

SYMBOL	DESCRIPTION	DATE	BY

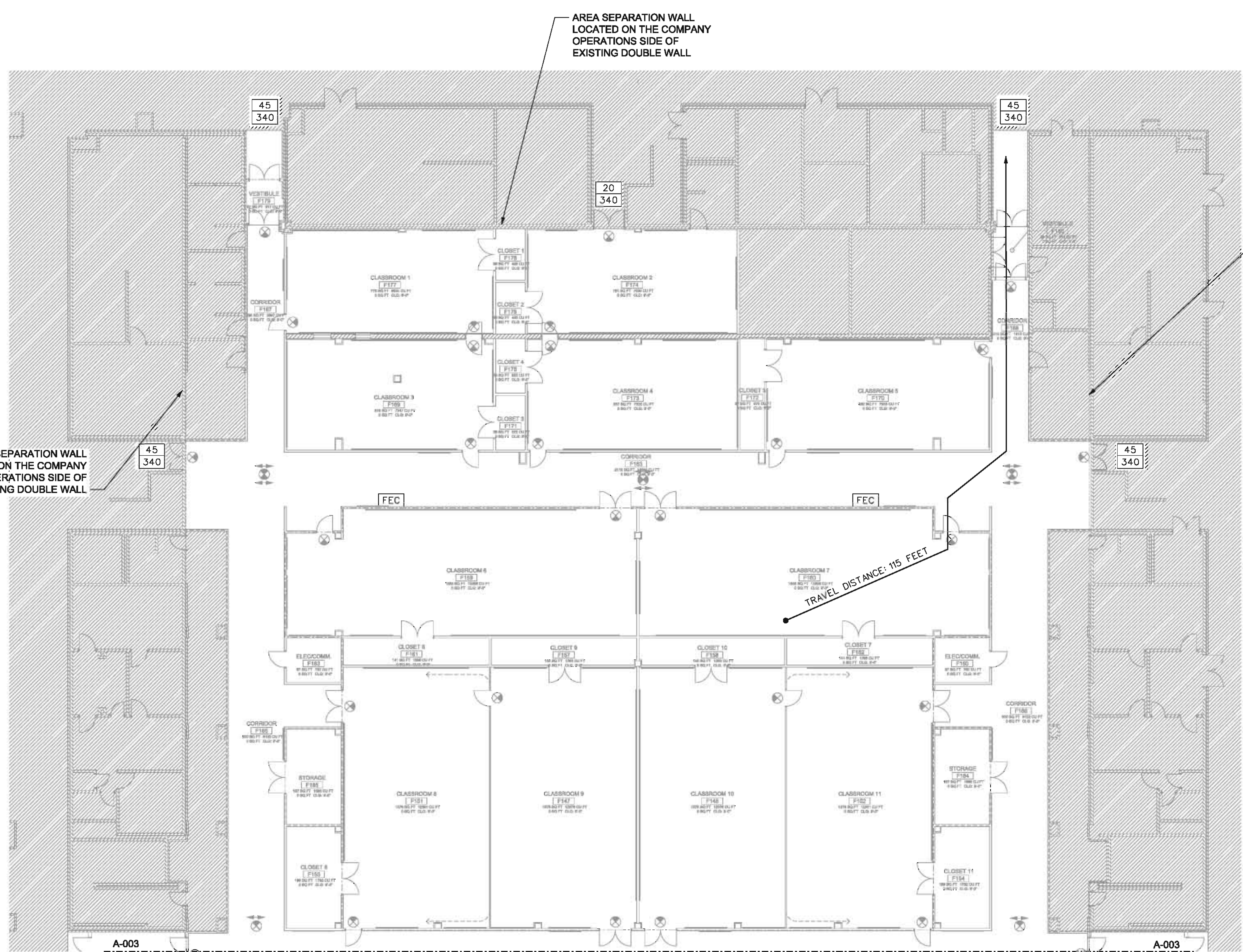


DESIGNED BY: JMW	DATE: 06 July 2011	SOLICITATION NO.: W12S-14R-008	CONTRACT NO.: W12S-14R-008	CATEGORY CODE: 222X34	DATE: 06 July 2011
DWN BY: HLM	CRD BY: DWF	ISSUED BY: KZF	DATE: 06 July 2011	SCALE: AS NOTED	
PROJECT: KZF	PROJECT: KZF	PROJECT: KZF	PROJECT: KZF	PROJECT: KZF	PROJECT: KZF

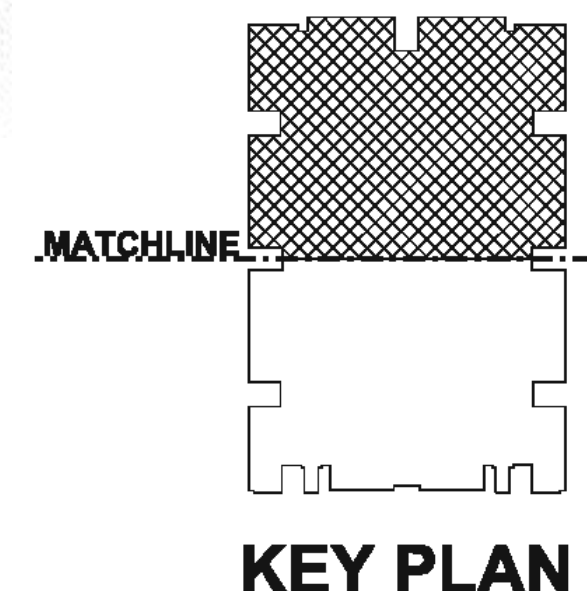
QUAD DFAC AND STARSHIP RENOVATIONS
BUILDING 5422
CODE SUMMARY

PLATE REFERENCE NUMBER
A-001
SHEET 22 of 152

\$\$\$DGN\$PEC\$\$\$
\$\$\$SYS\$TIMES\$\$\$
\$\$\$USER\$NAME\$\$\$



- LEGEND**
- XX - NUMBER OF OCCUPANTS USING EXIT
 - XXX - EXIT CAPACITY
 - - TRAVEL DISTANCE
 - ⊗ - EXIT SIGN
 - FEC - SEMI-RECESSED FIRE EXTINGUISHER CABINET
 - - SMOKE PARTITION
 - - 1HR FIRE RESISTANCE RATED BARRIER
 - - 2HR FIRE RESISTANCE RATED BARRIER
 - ⊠ - KNOX BOX
 - ▨ - AREA NOT IN SCOPE (NO WORK)



1 FIRST FLOOR PLAN - LIFE SAFETY
 A-003 SCALE: 3/32" = 1'-0"

0 4' 8' 16'
 SCALE: 3/32" = 1'-0"



SYMBOL	DESCRIPTION	DATE	BY



DESIGNED BY: JMW	DATE: 06 July 2011
DWN BY: HJM	SOLICITATION NO.: W125-14R-003
CONTRACT NO.: W125-14R-003	CONTRACT NO.: W125-14R-003
FILE NAME: Construction	FILE NAME: Construction
FILE PATH: \\savage\proj\125-14R-003	FILE PATH: \\savage\proj\125-14R-003
DATE: 06 July 2011	DATE: 06 July 2011
SCALE: AS NOTED	SCALE: AS NOTED

QUAD DFAC AND STARSHIP RENOVATIONS
 SAVANNAH DISTRICT
 BUILDING 5422
 PARTIAL FIRE FLOOR PLAN
 LIFE SAFETY

PLATE REFERENCE NUMBER
A-003
 SHEET 24 of 152

\$\$\$DGNspecs\$\$\$
 \$\$\$SYSTEMS\$\$\$
 \$\$\$USERNAME\$\$\$