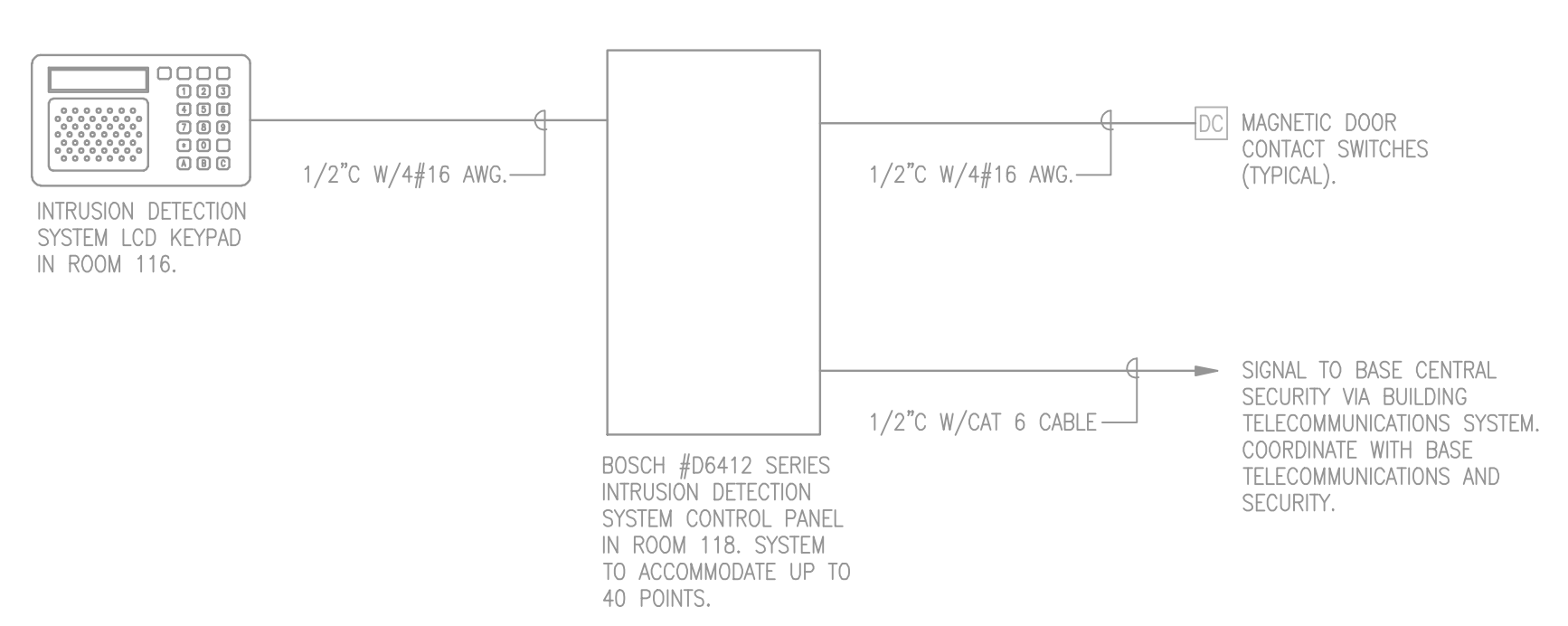
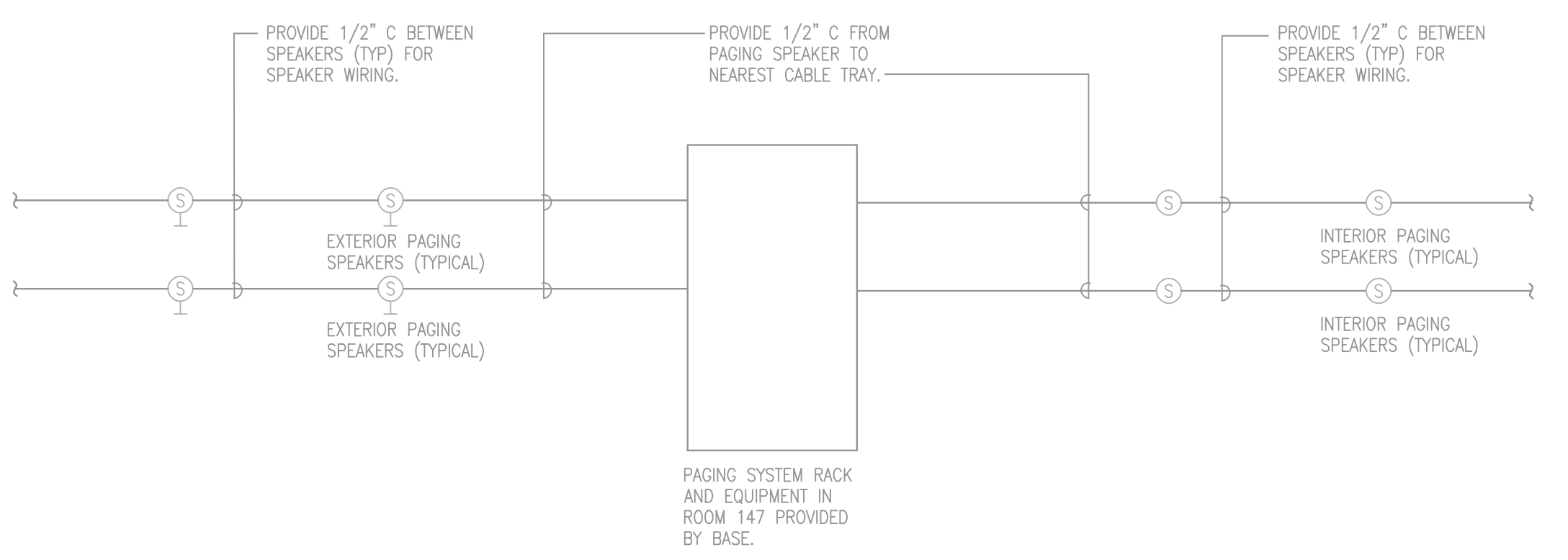


CCTV CAMERA SCHEDULE					
LABEL	LOCATION	CAMERA (BOSCH SERIES)	LENS	MOUNTING	REMARKS
A	INDOOR	VDC-485V04, NTSC, HIGH IMPACT, VANDAL-RESISTANT, WEATHERPROOF HOUSING	VARIFOCAL, 3.7mm TO 12mm	FLUSH MOUNT HOUSING INTO CEILING	
B	INDOOR	VDC-485V04, NTSC, HIGH IMPACT, VANDAL-RESISTANT, WEATHERPROOF HOUSING	VARIFOCAL, 3.7mm TO 12mm	VDA-455CMT-CORNER MOUNT	
C	INDOOR	VDC-485V04, NTSC, HIGH IMPACT, VANDAL-RESISTANT, WEATHERPROOF HOUSING	VARIFOCAL, 3.7mm TO 12mm	VDA-455CMT-CORNER MOUNT	
D	OUTDOOR	VDC-485V04, NTSC, HIGH IMPACT, VANDAL-RESISTANT, WEATHERPROOF HOUSING	VARIFOCAL, 3.7mm TO 12mm	VDC-445WMT	UNIT TO WITHSTAND 100 MPH WIND LOAD.

1 **CCTV RISER DIAGRAM**  
ES.03 SCALE: NOT TO SCALE



2 **INTRUSION DETECTION RISER DIAGRAM**  
ES.03 SCALE: NOT TO SCALE



3 **PAGING SYSTEM RISER DIAGRAM**  
ES.03 SCALE: NOT TO SCALE

- GENERAL NOTES**
- CCTV AND INTRUSION DETECTION SYSTEM DESIGNS BASED ON BOSCH SECURITY PRODUCTS. SEE SPECIFICATION SECTION 282.300 FOR OTHER APPROVED MANUFACTURERS. SYSTEM COMPONENTS MUST MATCH DESIGN INTENT AND CAPABILITIES OF SPECIFIED SYSTEM.
  - COORDINATE FINAL LOCATIONS OF CCTV EQUIPMENT WITH USER AND OTHER TRADES.
  - ADJUST FINAL AIM AND FOCAL LENGTH OF EACH CAMERA AS DIRECTED BY THE USER.
  - PROVIDE RECESSED MAGNETIC DOOR CONTACT SWITCHES IN FINISHED SPACES.
  - CONCEAL CCTV AND INTRUSION DETECTION SYSTEM CONDUIT AND WIRING IN FINISHED SPACES.

- KEY NOTES**
- MOUNT AT APPROXIMATELY 7'-6" AFF. COORDINATE WITH SUSPENDED LIGHT FIXTURES IN ROOM TO ENSURE CAMERA VIEW IS NOT BLOCKED.
  - MOUNT AT APPROXIMATELY 11'-0" AFF. COORDINATE WITH SUSPENDED LIGHT FIXTURES IN ROOM TO ENSURE CAMERA VIEW IS NOT BLOCKED.
  - MOUNT AT APPROXIMATELY 10'-0" AFF. COORDINATE WITH SUSPENDED LIGHT FIXTURES IN ROOM TO ENSURE CAMERA VIEW IS NOT BLOCKED.
  - MOUNT AT APPROXIMATELY 10'-0" AFF. ENSURE CAMERA VIEW IS NOT BLOCKED.



Symbol	Description	Date	Approved
FOR CONSTRUCTION			
FOR CONSTRUCTION			
FOR CONSTRUCTION			
FOR CONSTRUCTION			
FOR CONSTRUCTION			

Designed by:	RDJ	Date:	08/20/20
Drawn by:	RDJ	Design file no.:	101151
Reviewed by:	GBB	Drawn code:	08/20/20
Submitted by:	GBB	File name:	MOODY-ALTERNATION
Chief Engineer:		Plot date:	11/10/20
		Plot scale:	1:1

DEPARTMENT OF THE AIR FORCE  
23 CIVIL ENGINEER SQUADRON  
MOODY AIR FORCE BASE, GEORGIA

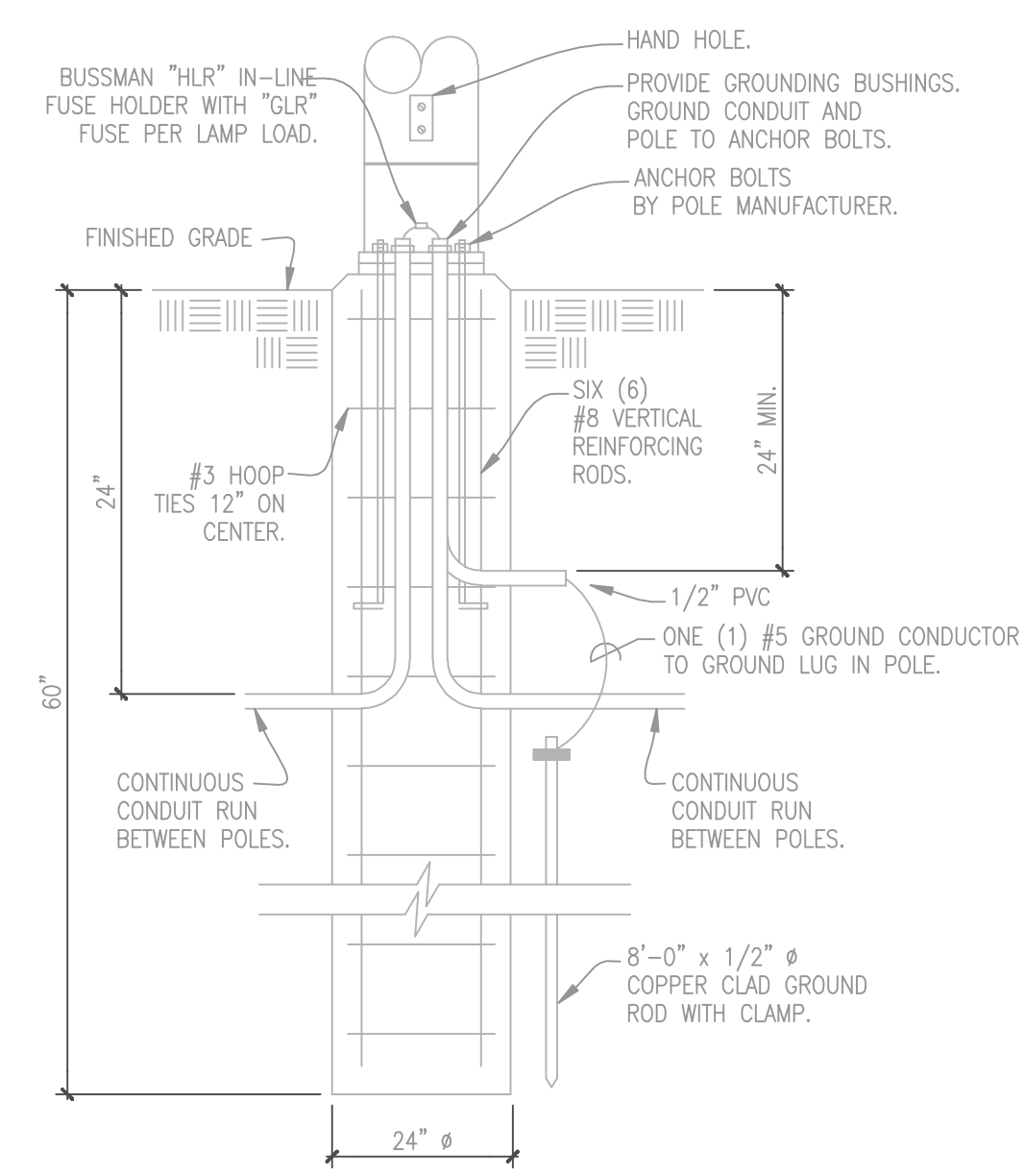
**LEO DALY**  
FORMERLY SETTER LEACH & LUNSTROM

MOODY AFB, GEORGIA  
YOUTH CENTER ADDITION/ALTERATION  
MAFB PROJECT NO. Q5EUD10145A & B

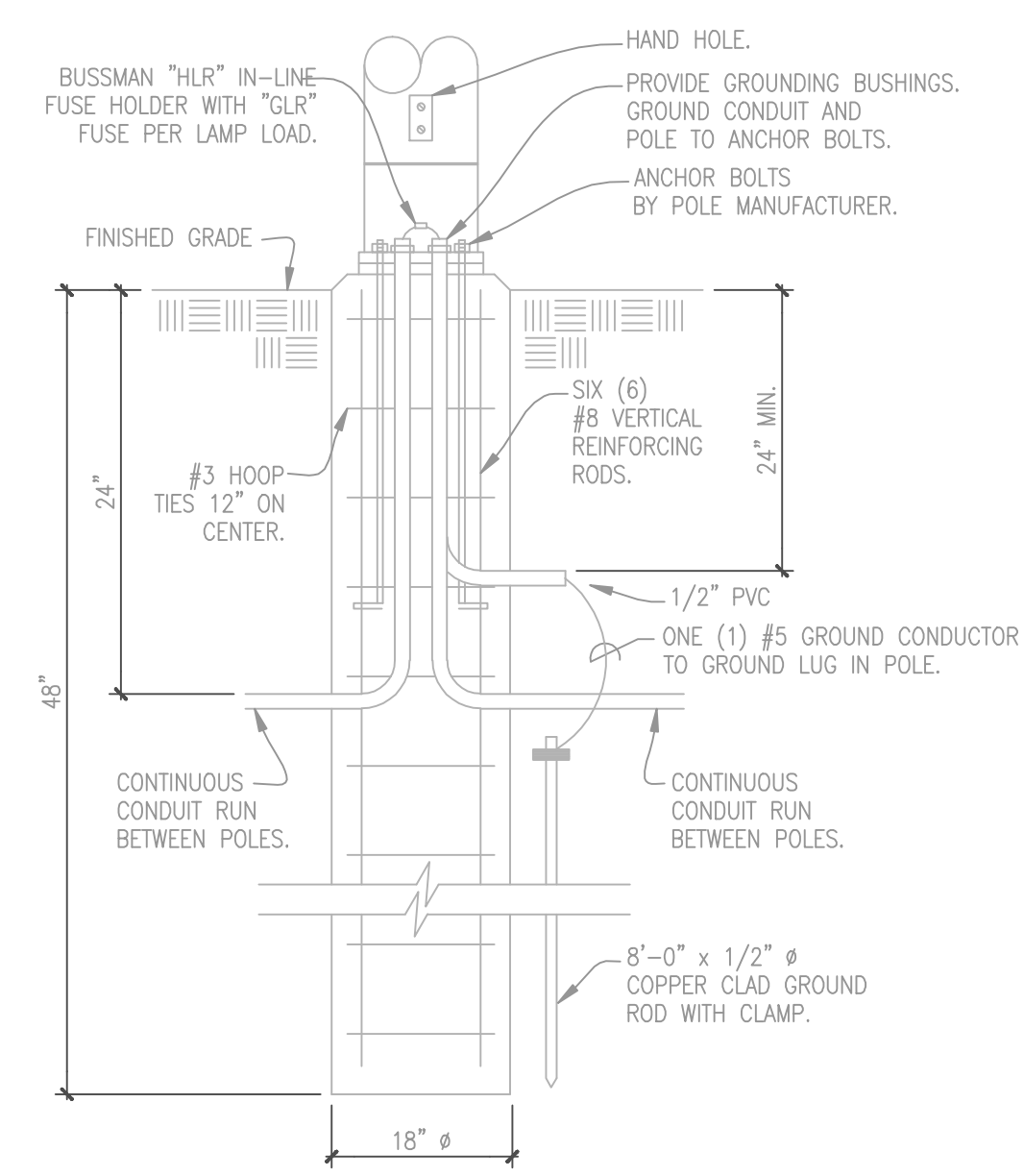
**RISER DIAGRAMS**

Sheet reference number:  
**E5.03**

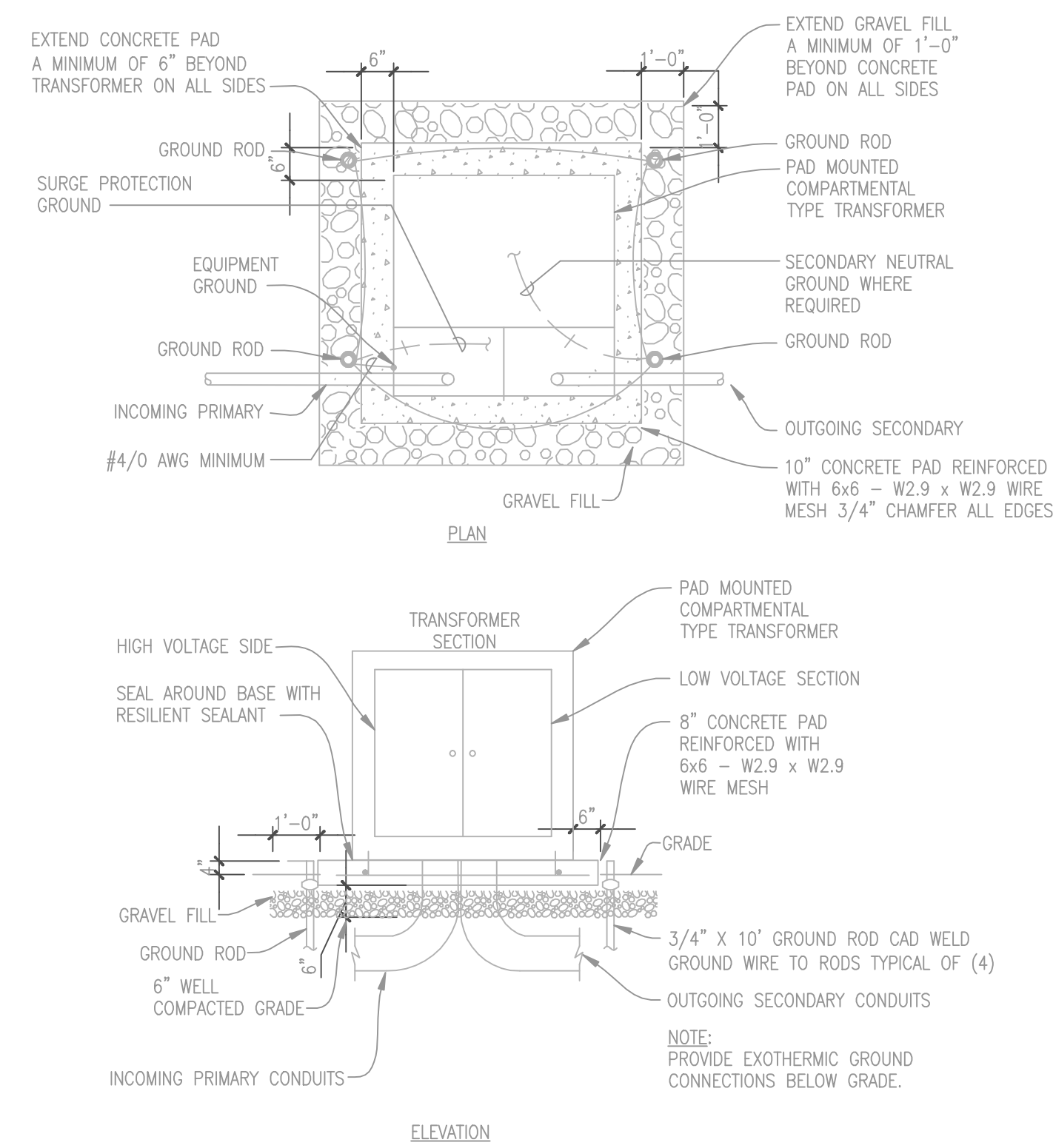
A B C D E F G H



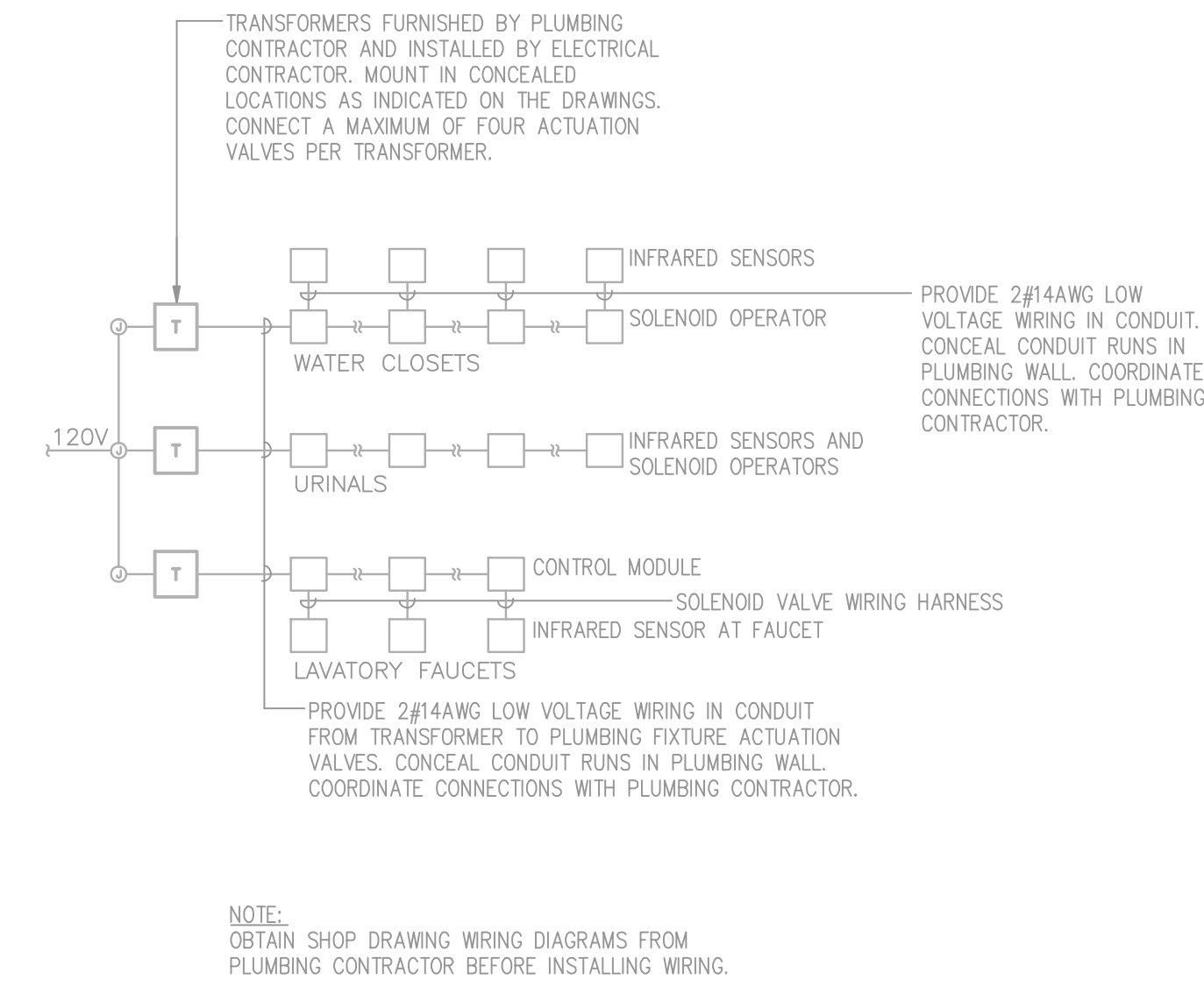
1 CONCRETE POLE BASE DETAIL  
E6.01 SCALE: N.T.S.



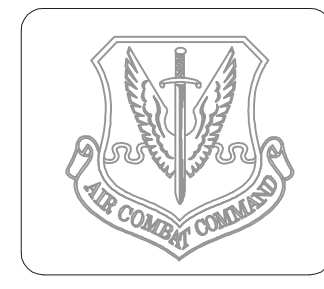
2 CONCRETE POLE BASE DETAIL  
E6.01 SCALE: N.T.S.



3 TRANSFORMER PAD DETAIL  
E6.01 SCALE: N.T.S.



4 TYPICAL ACTUATION VALVE WIRING DETAIL  
E6.01 SCALE: N.T.S.



Symbol	Description	Date	Approved
	FOR CONSTRUCTION	10/11/11	
	FOR CONSTRUCTION	10/11/11	
	FOR CONSTRUCTION	10/11/11	
	FOR CONSTRUCTION	10/11/11	
	FOR CONSTRUCTION	10/11/11	

Designed by:	MSB	Date:	08/26/09	Rev:	
Drawn by:	MSB	Design file no.:			
Reviewed by:	BBB	Drawing code:			
Submitted by:	BBB	File name:	WCE6.01.DWG		
		Plot date:			
		Plot scale:	1:1		

DEPARTMENT OF THE AIR FORCE  
23 CIVIL ENGINEER SQUADRON  
MOODY AIR FORCE BASE, GEORGIA

**LEO DALY**  
FORMERLY SETTER LEACH & LUNDSTROM

MOODY AFB, GEORGIA  
YOUTH CENTER ADDITION/ALTERATION  
MAFB PROJECT NO. QSEU010145A & B

**DETAILS**

Sheet reference number:  
**E6.01**



SCHEDULE FOR PANEL												EXISTING - MPA		PROJECT		MOODY YOUTH CENTER		COMM. NO.		021-10046-000	
MOUNTING		SURFACE		LOAD - KVA		LOCATION		ROOM 115		MOUNTING		SURFACE		LOAD - KVA		LOCATION		ROOM 115			
NOTES	LIGHTS	RECEPT	MISC.	BKR	PHASE	BKR	MISC.	RECEPT	LIGHTS	NOTES	LIGHTS	RECEPT	MISC.	BKR	PHASE	BKR	MISC.	RECEPT	LIGHTS	NOTES	
SPACE				1	A	2				SPACE				3	B	4				SPACE	
SPACE				5	C					SPACE				7	A	8				SPACE	
PANEL LPA			11.00	225/3		9	B	10		SPACE				11	C	12				SPACE	
"			11.00			13	A	14		SPACE				15	B	16				SPACE	
SPACE				17	C	18				SPACE				19	A	20				SPACE	
PANEL LPB			10.00	225/3		21	B	22		SPACE				23	C	24				SPACE	
"			10.00			25	A	26		SPACE				27	B	28				SPACE	
SPACE				29	C	30				SPACE				31	A	32				SPACE	
SPACE				33	B	34				SPACE				35	C	36				SPACE	
SPACE				37	A	38				SPACE				39	B	40				SPACE	
SPACE				41	C	42				SPACE										SPACE	
LOAD DATA		LIGHTS		RECEPT		MISC.		PHASE DATA		PANEL TOTAL		KVA		KVA		KVA		AMPS		AMPS	
LIGHTS		0.00		KVA		A		21.00		KVA		63.00		KVA		B		21.00		KVA	
RECEPT		0.00		KVA		C		21.00		KVA		174.57		KVA		MISC.		63.00		KVA	

SCHEDULE FOR PANEL												EXISTING - LPA		PROJECT		MOODY YOUTH CENTER		COMM. NO.		021-10046-000	
MOUNTING		SURFACE		LOAD - KVA		LOCATION		ROOM 132		MOUNTING		SURFACE		LOAD - KVA		LOCATION		ROOM 132			
NOTES	LIGHTS	RECEPT	MISC.	BKR	PHASE	BKR	MISC.	RECEPT	LIGHTS	NOTES	LIGHTS	RECEPT	MISC.	BKR	PHASE	BKR	MISC.	RECEPT	LIGHTS	NOTES	
ACTIVITY RM 150				1	A	2				RM 150 COMP				3	B	4				RM 150 COMP	
ACTIVITY RM 150				5	C					RM 150 COMP				7	A	8				RM 150 COMP	
ACTIVITY RM 150				9	B	10				RM 150 COMP				11	C	12				RM 150 COMP	
RM 132,137,139,157				13	A	14				ART RM 153				15	B	16				SCIENCE RM 154	
RECEPT LIGHTING			1.00	20/1		17	C	18		SCIENCE RM 154				19	A	20				SPARE	
COMMONS 151			0.80	20/1		21	B	22		SPARE				23	C	24				SPARE	
COMMONS 151			0.80	20/1		25	A	26		SPARE				27	B	28				SPARE	
RM 153, 156			1.40	20/1		29	C	30		SPARE				31	A	32				SPARE	
RM 153, 156			1.20	20/1		33	B	34		COMMONS 151				35	C	36				COMMONS 151 EWC	
SAC OFFICE 154			0.90	20/1		37	A	38		COMMONS 151				39	B	40				COMMONS 151	
SPARE				39	B	40		0.50		COMMONS 151				41	C	42				FCU-2, FCU-3	
SPARE				41	C	42		0.20		FCU-2, FCU-3											
LOAD DATA		LIGHTS		RECEPT		MISC.		PHASE DATA		PANEL TOTAL		KVA		KVA		KVA		AMPS		AMPS	
LIGHTS		1.00		KVA		A		19.10		KVA		55.00		KVA		B		17.90		KVA	
RECEPT		26.30		KVA		C		18.00		KVA		152.66		KVA		MISC.		27.70		KVA	

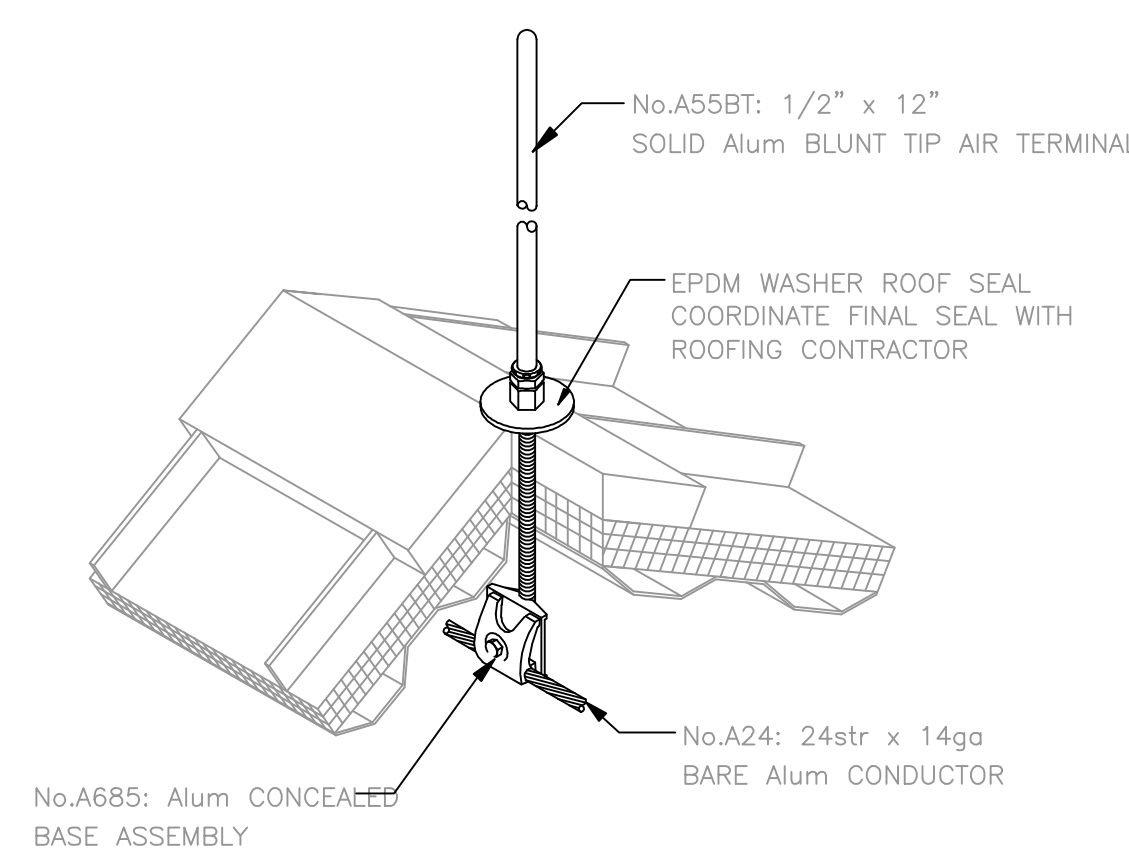
SCHEDULE FOR PANEL												EXISTING - LPA		PROJECT		MOODY YOUTH CENTER		COMM. NO.		021-10046-000	
MOUNTING		SURFACE		LOAD - KVA		LOCATION		ROOM 134		MOUNTING		SURFACE		LOAD - KVA		LOCATION		ROOM 134			
NOTES	LIGHTS	RECEPT	MISC.	BKR	PHASE	BKR	MISC.	RECEPT	LIGHTS	NOTES	LIGHTS	RECEPT	MISC.	BKR	PHASE	BKR	MISC.	RECEPT	LIGHTS	NOTES	
ACTIVITY RM 144B				1	A	2				144B				3	B	4				SPARE	
ACTIVITY RM 144B				5	C					RM 144A				7	A	8				RM 144A	
RM 144A,144B				9	B	10				RM 144A DW				11	C	12				SPARE	
ACTIVITY RM 144A				13	A	14				SPARE				15	B	16				SPARE	
RM 144A FRIG			1.00	20/1		17	C	18		SPARE				19	A	20				SPARE	
RM 144A			0.60	20/1		21	B	22		SPARE				23	C	24				KINDER RM 152	
LAUNDRY RM 145A			1.50	20/1		25	A	26		SPARE				27	B	28				KINDER RM 152	
RM 134, 145A			0.80	20/1		29	C	30		RM 131,135				31	A	32				SPARE	
MECH RM 134			1.00	0.20		33	B	34		SPARE				35	C	36				SPARE	
SPARE				37	A	38				SPARE				39	B	40				SPARE	
B.A.S MECH RM 134			1.00	20/1		41	C	42		3.00				41	C	42				DRYER 145A	
SPARE				20/1		23	C	24		1.00				20/1		23	C	24		1.00	
KINDER RM 152			1.20	20/1		25	A	26		1.00				20/1		25	A	26		1.00	
KINDER RM 152			1.20	20/1		27	B	28		0.60				20/1		27	B	28		0.60	
SPARE				20/1		29	C	30						20/1		29	C	30			
SPARE				20/1		31	A	32						20/1		31	A	32			
HALLWAY 145			1.00	20/1		33	B	34						20/1		33	B	34			
SPARE				20/1		35	C	36						20/1		35	C	36			
SPARE				20/1		37	A	38						20/1		37	A	38			
SPARE				20/1		39	B	40		3.00				20/1		39	B	40		3.00	
SPARE				20/1		41	C	42		3.00				20/1		41	C	42		3.00	
LOAD DATA		LIGHTS		RECEPT		MISC.		PHASE DATA		PANEL TOTAL		KVA		KVA		KVA		AMPS		AMPS	
LIGHTS		0.90		KVA		A		7.00		KVA		26.20		KVA		B		11.60		KVA	
RECEPT		14.60		KVA		C		7.60		KVA		72.72		KVA		MISC.		10.70		KVA	

SCHEDULE FOR PANEL												EXISTING - LPA		PROJECT		MOODY YOUTH CENTER		COMM. NO.		021-10046-000	
MOUNTING		SURFACE		LOAD - KVA		LOCATION		ROOM 114		MOUNTING		SURFACE		LOAD - KVA		LOCATION		ROOM 114			
NOTES	LIGHTS	RECEPT	MISC.	BKR	PHASE	BKR	MISC.	RECEPT	LIGHTS	NOTES	LIGHTS	RECEPT	MISC.	BKR	PHASE	BKR	MISC.	RECEPT	LIGHTS	NOTES	
EXIST. GYM			1.50	20/1		1	A	2		EXIST. GYM				3	B	4				EXIST. GYM	
EXIST. GYM			1.50	20/1		5	C			SPARE				7	A	8				RECEPTION 116	
EXIST. GYM			1.50	20/1		9	B	10		RECEPTION 116				11	C	12				RECEPTION 116	
SPARE				20/1		13	A	14		RECEPTION 116				15	B	16				RECEPTION 116	
RM 106,107,110,113			0.80	20/1		17	C	18		SPARE				19	A	20				EXIST. GYM	
EWG HALL 105			0.50	20/1		21	B	22		EXIST. GYM				23	C	24				EXIST. GYM	
SPARE				20/1		25	A	26		SPARE				27	B	28				WAITING RM 128	
DIR OFFICE 112			1.20	20/1		29	C	30		WAITING RM 128				31	A	32				OFFICE RM 127	
ADMIN SUPP 115			0.50	20/1		33	B	34		OFFICE RM 127				35	C	36				HOMEWORK 120	
ADMIN SUPP 115			0.50	20/1		37	A	38		HOMEWORK 120				39	B	40				HOMEWORK 120	
ADMIN SUPP 115			0.60	20/1		41	C	42		HOMEWORK 120										HOMEWORK 120	
RECEPTION 116			1.00	20/1		23	C	24		1.00				20/1		23	C	24		1.00	
RECEPTION 116			1.20	20/1		25	A	26		1.20				20/1		25	A	26		1.20	
SPARE				20/1		27	B	28		0.60				20/1		27	B	28		0.60	
SPARE				20/1		29	C	30		0.60				20/1		29	C	30		0.60	
SPARE				20/1		31	A	32		1.20				20/1		31	A	32		1.20	
HALLWAY			1.60	20/1		33	B	34		0.80				20/1		33	B	34		0.80	
SPARE				20/1		35	C	36		0.80				20/1		35	C	36		0.80	
SPARE				20/1		37	A	38		1.60				20/1		37	A	38		1.60	
SPARE				20/1		39	B	40		0.60				20/1		39	B	40			

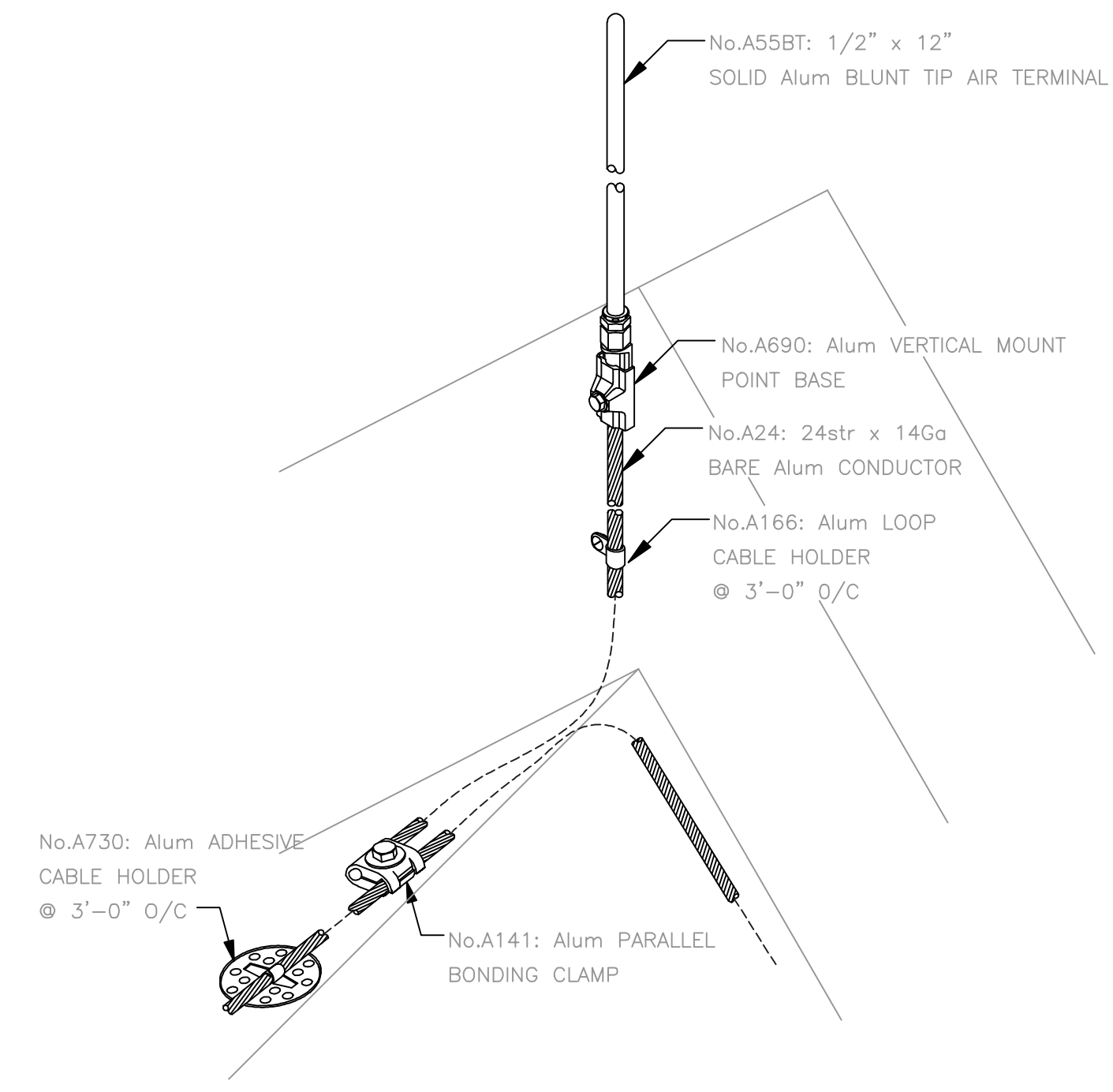


A B C D E F G H

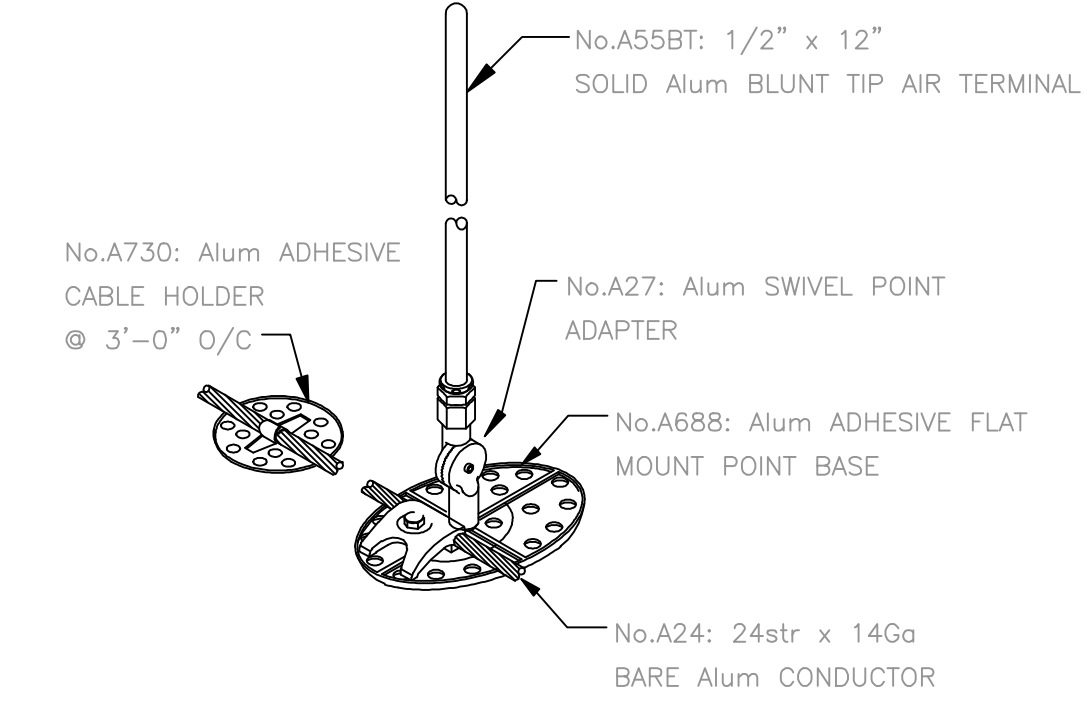
7  
6  
5  
4  
3  
2  
1



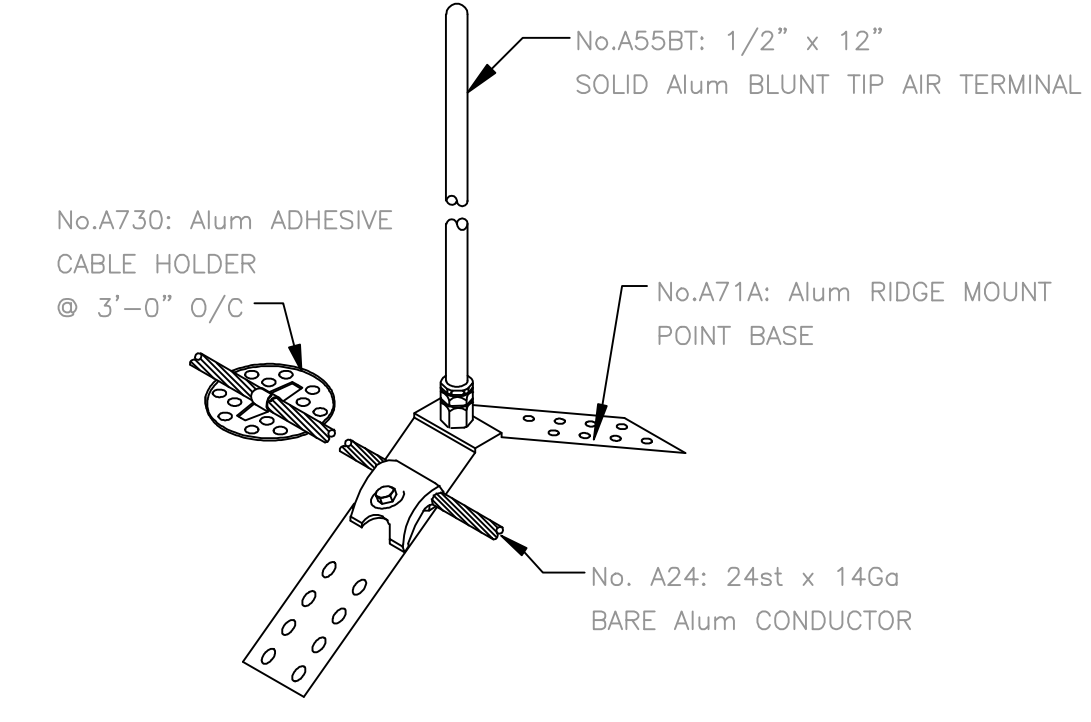
1 DETAIL A  
E8.02/ SCALE: NTS



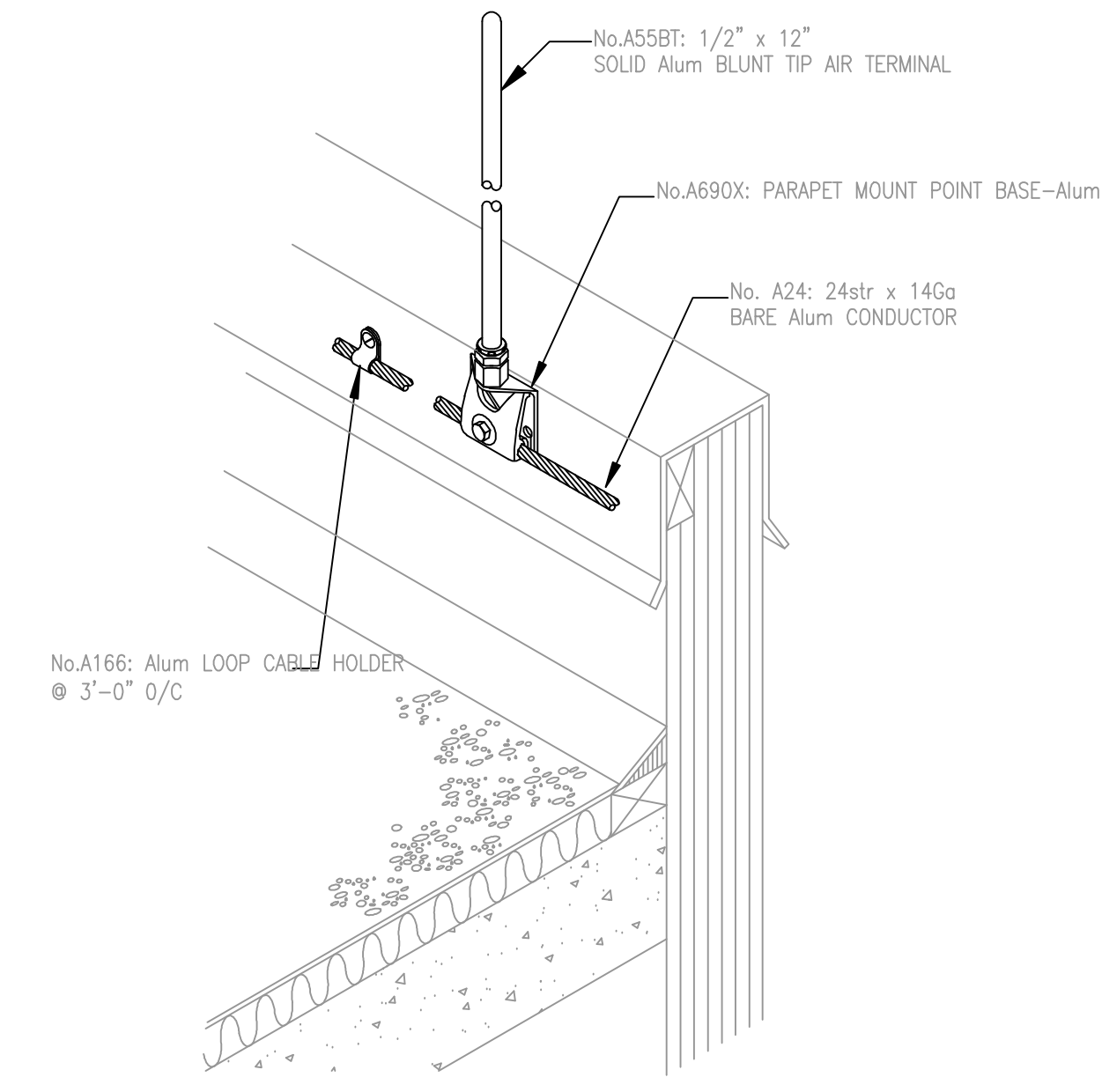
2 DETAIL B  
E8.02/ SCALE: NTS



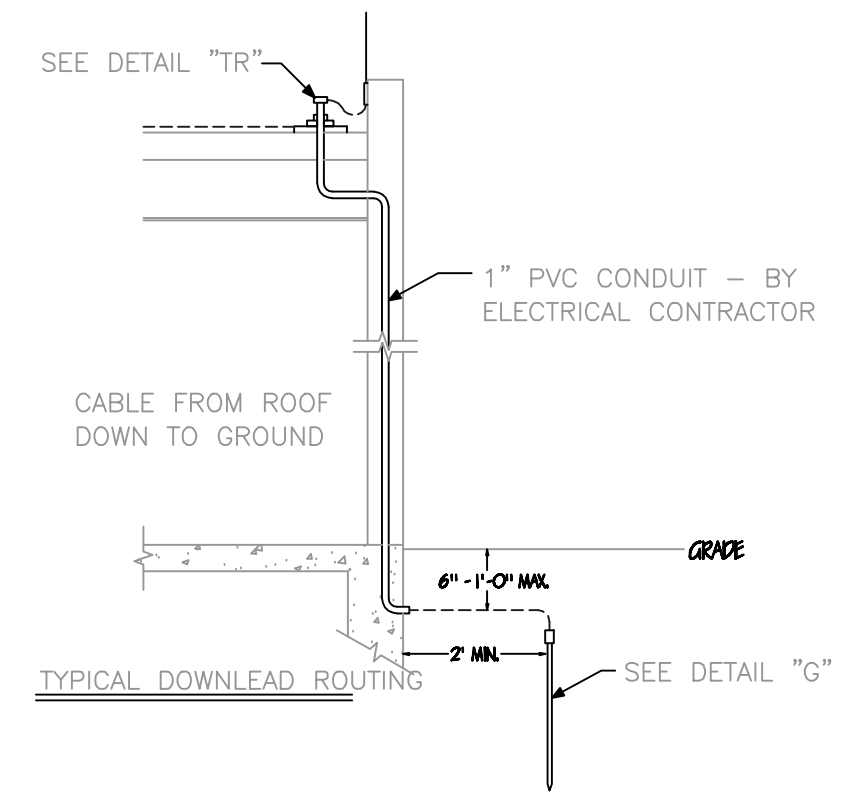
3 DETAIL C  
E8.02/ SCALE: NTS



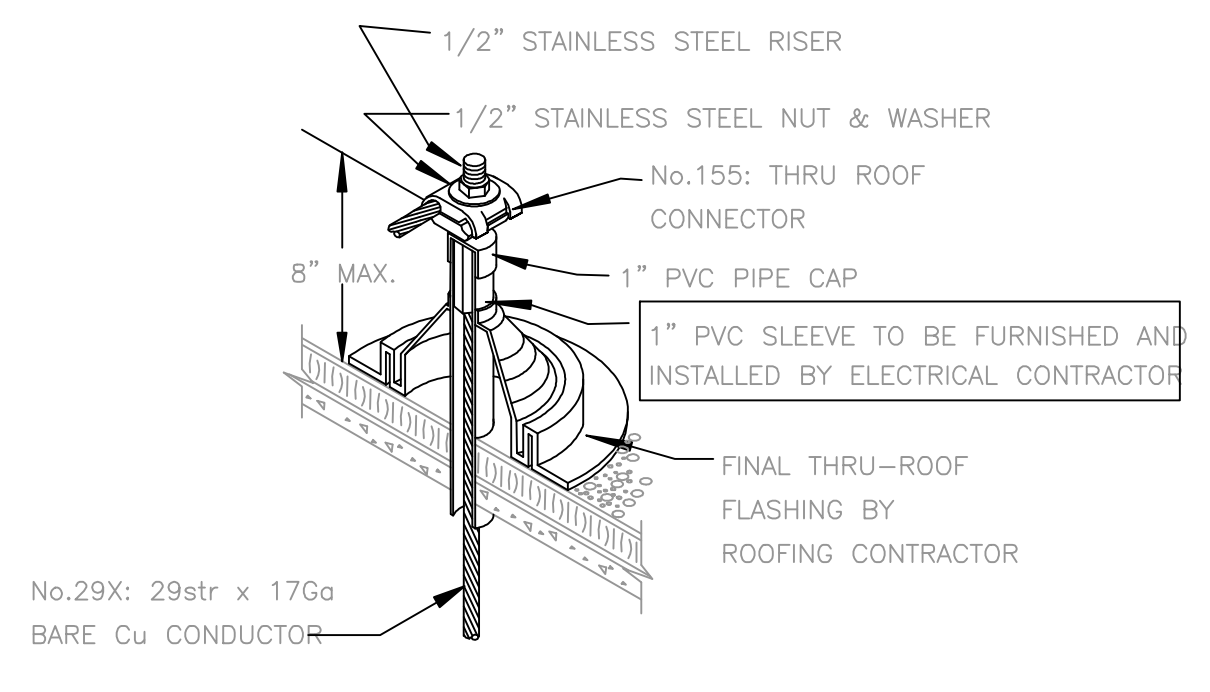
4 DETAIL D  
E8.02/ SCALE: NTS



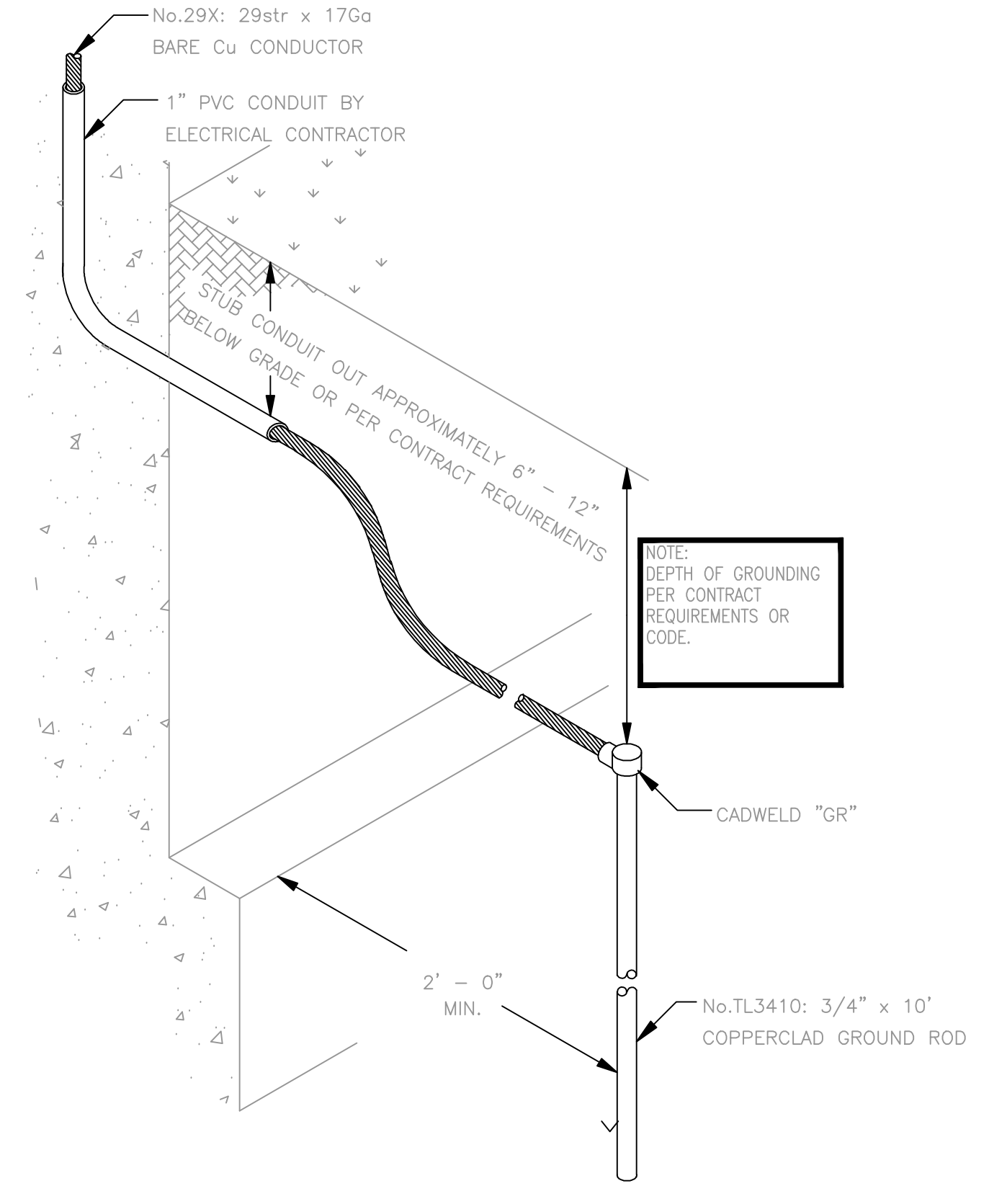
5 DETAIL E  
E8.02/ SCALE: NTS



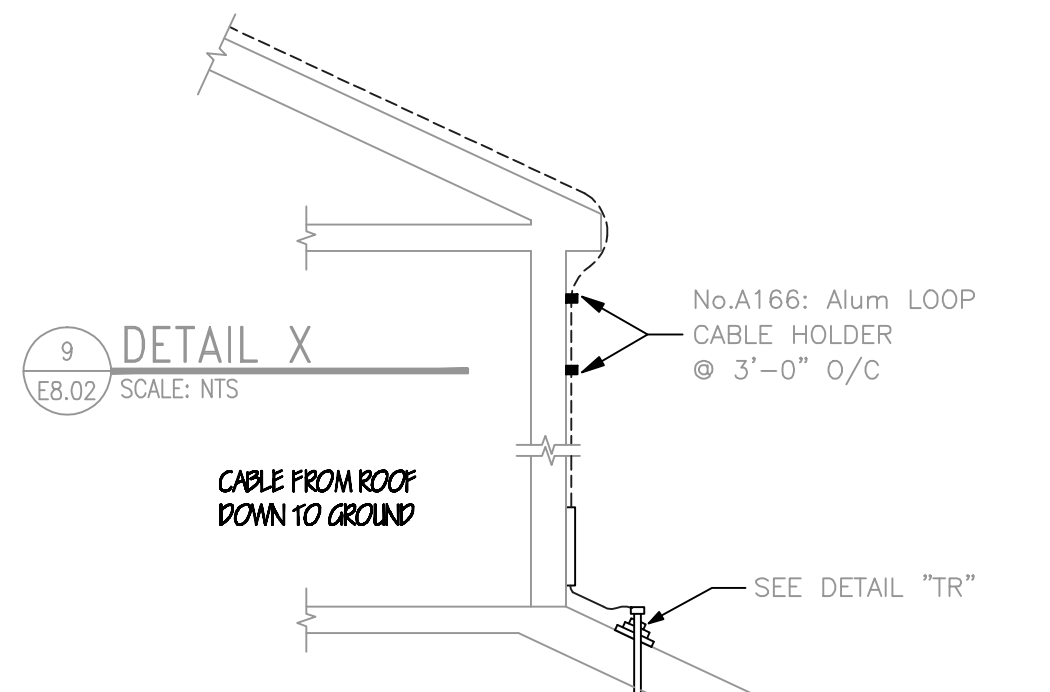
6 DETAIL Y  
E8.02/ SCALE: NTS



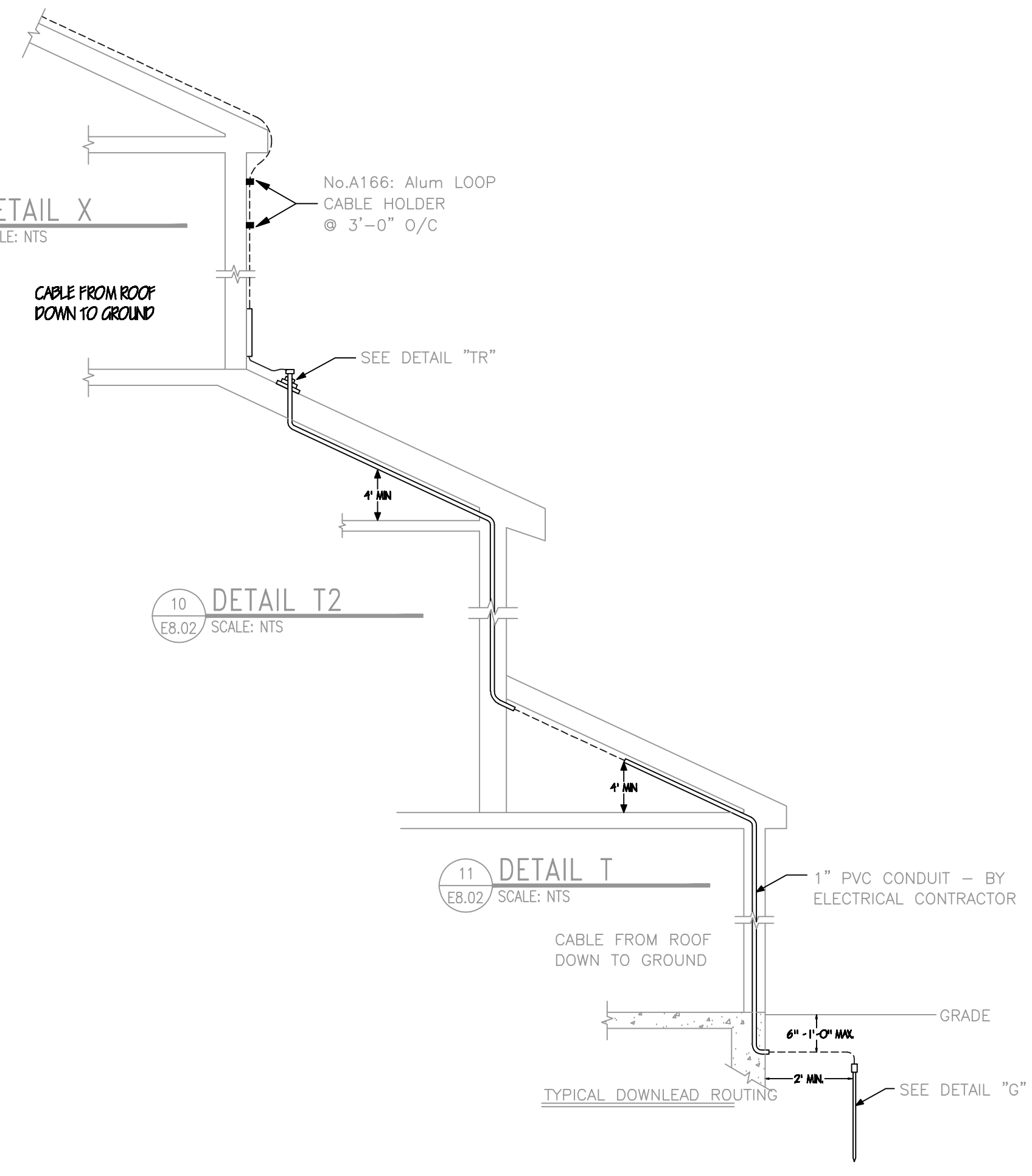
8 DETAIL TR  
E8.02/ SCALE: NTS



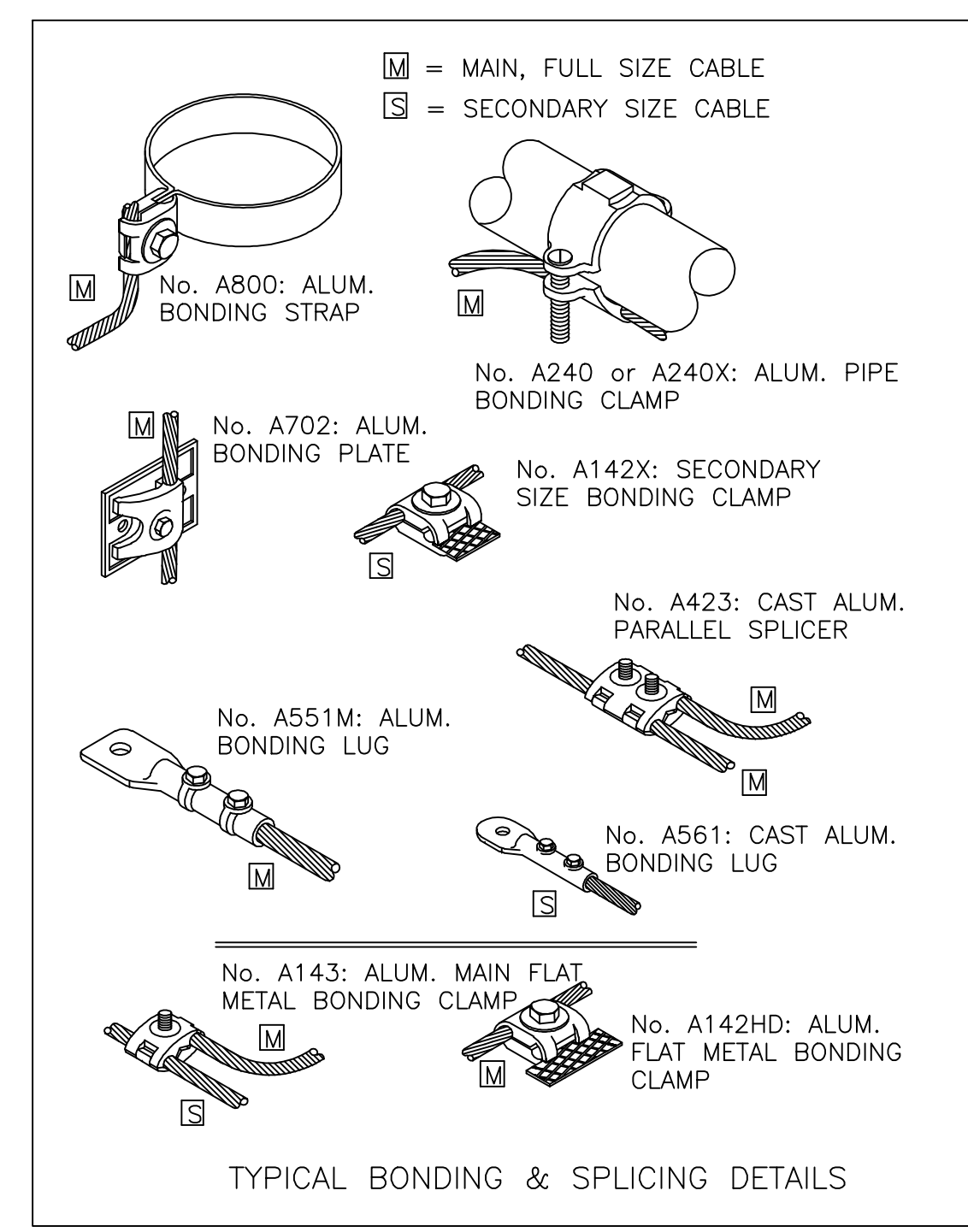
7 DETAIL G  
E8.02/ SCALE: NTS



9 DETAIL X  
E8.02/ SCALE: NTS



11 DETAIL T  
E8.02/ SCALE: NTS



Symbol	Description	Date	Approved
	FOR CONSTRUCTION	03/15/11	
	NOT FOR CONSTRUCTION	04/20/11	
	NOT FOR CONSTRUCTION	04/20/11	
	NOT FOR CONSTRUCTION	04/20/11	

Date:	08/06/09	Rev:	
Designed by:	RDJ	Design file no.:	
Drawn by:	ATF	RDJ	
Reviewed by:	BBB	Drawing code:	
Submitted by:	BBB	File name:	WPCB-GLDING
Chief Engineer:		Plot date:	1:1

DEPARTMENT OF THE AIR FORCE  
23 AIR COMBAT COMMAND  
WOODY AIR FORCE BASE, GEORGIA  
**LEO DALY**  
FORMERLY SETTER LEACH & LINDSTROM

MOODY AFB, GEORGIA  
YOUTH CENTER ADDITION/ALTERATION  
MAFB PROJECT NO. QSEU010145A & B  
**LIGHTNING PROTECTION DETAILS**

Sheet reference number:  
**E8.02**