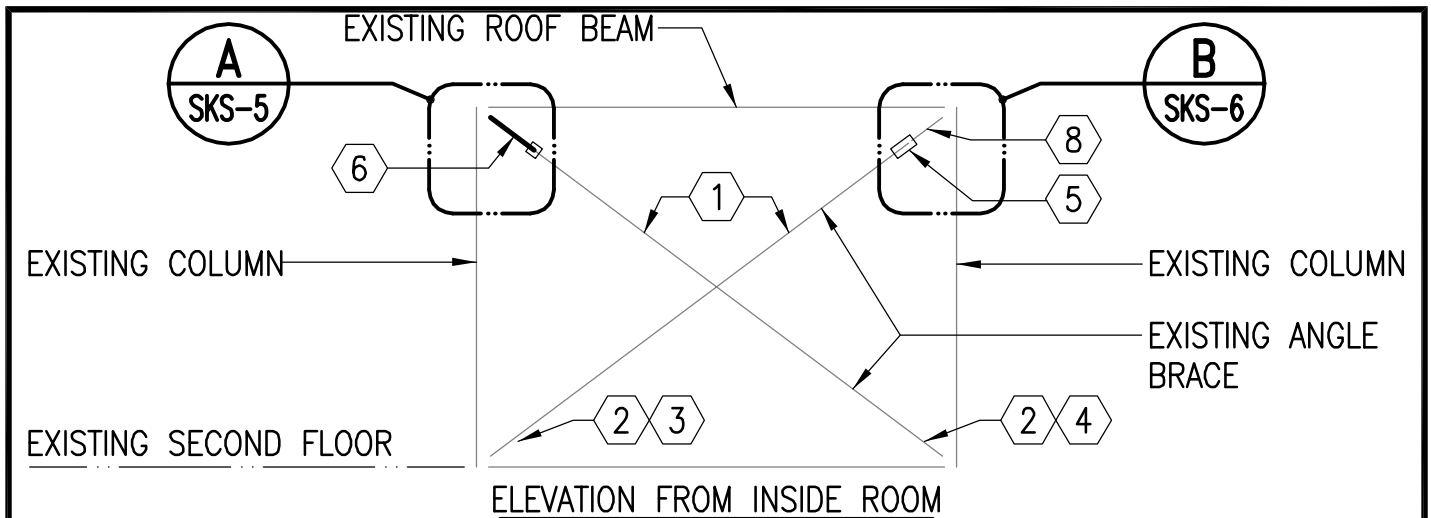


Scope: This project is to repair various steel members in Hangar 130 at MCAS Cherry Point as described below and as shown on the plan drawings S-1 to S-11 and A-1 to A-5. The work has 5 definable features.

1. The contractor shall clean and repair the diagonal bracing in the south west corner of the hangar on the second floor in room K-02 as shown on sheets S-1, S-2, and S-3.
2. Remove and replace the steel column in the south west hangar bay door pocket as shown on sheets S-4, S-5, S-6, S-7, A-1, A-2, A-3, A-4, A-5
3. The contractor shall clean and repair the three existing columns in the hangar bay door pockets. One each column is at the north west corner, north east corner, and south east corner of the hangar. Refer to sheet S-8.
4. The contractor shall remove the existing cover plate as necessary to inspect, clean and repair the support columns at the center of the hangar at both the east and west sides of the hangar. Refer to sheets S-10 and S-11.
5. The contractor must coordinate all work with the existing Prime Contractor onsite as a current complete hangar renovation project is underway and all areas of these listed repairs fall within the active construction site.
6. Period of Performance for this work is 90 days.



BRACED BAY ELEVATION AT SOUTHWEST CORNER OF HIGH ROOF ON SECOND FLOOR ROOM

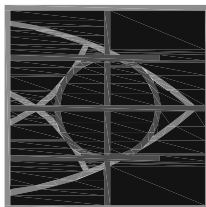
1/8" = 1'-0"

REPAIR NOTES:

1. WIRE BRUSH ALL RUSTED SECTIONS OF ANGLE BRACES TO REMOVE RUSTED MATERIAL DOWN TO SOUND MATERIAL. FIELD VERIFY MEMBER HAS NOT DETERIORATED BEYOND SURFACE RUST .
2. REMOVE EXISTING WELD BETWEEN ANGLE AND GUSSET PLATE AND PREPARE TO REWELD.
3. REWELD ANGLE TO PLATE WITH 9" OF 1/4" WELD CONTINUOUS ACROSS THE TOP AND 4" OF 1/4" VERTICAL WELD ACROSS THE END OF THE ANGLE.
4. REWELD ANGLE TO PLATE WITH 9" OF 1/4" WELD CONTINUOUS ACROSS THE TOP AND 4" OF 1/4" VERTICAL WELD BETWEEN BACK OF ANGLE AND INSIDE EDGE OF PLATE.
5. CUT EXISTING ANGLE 2" FROM EXISTING SPLICE AND DAMAGED STEEL. REMOVE ANGLE FROM GUSSET PLATE. GRIND SMOOTH AND PREPARE FOR NEW WELDED CONNECTION.
6. PREPARE SURFACE FOR WELDING. GRIND AND CLEAN SURFACE AS REQUIRED TO OBTAIN FLAT AND SOUND MATERIAL FOR WELDING.
7. AFTER PREPARATION OF SURFACES FOR WELDING, SURFACES SHALL BE INSPECTED BY WELDING INSPECTOR PRIOR TO WELDING.
8. NOTCH EXISTING CONCRETE WALL AS REQUIRED TO INSTALL NEW GUSSET PLATE.



DEPARTMENT OF THE NAVY NAVAL FACILITIES ENGINEERING COMMAND NAVFAC MIDLANT MCNC IPT	
NAVAL STATION NORFOLK, VIRGINIA	
SPEC. NO.:	
MAXIMO NO.:	
JOB NO.:	DATE: 08/16/2011
CHECKED: EHI	DESIGNED: EHI
DRAWN: JJK	QC:



NAVFAC

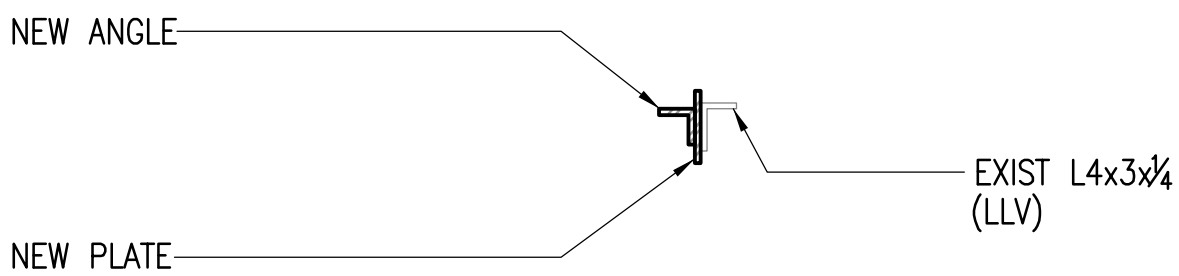
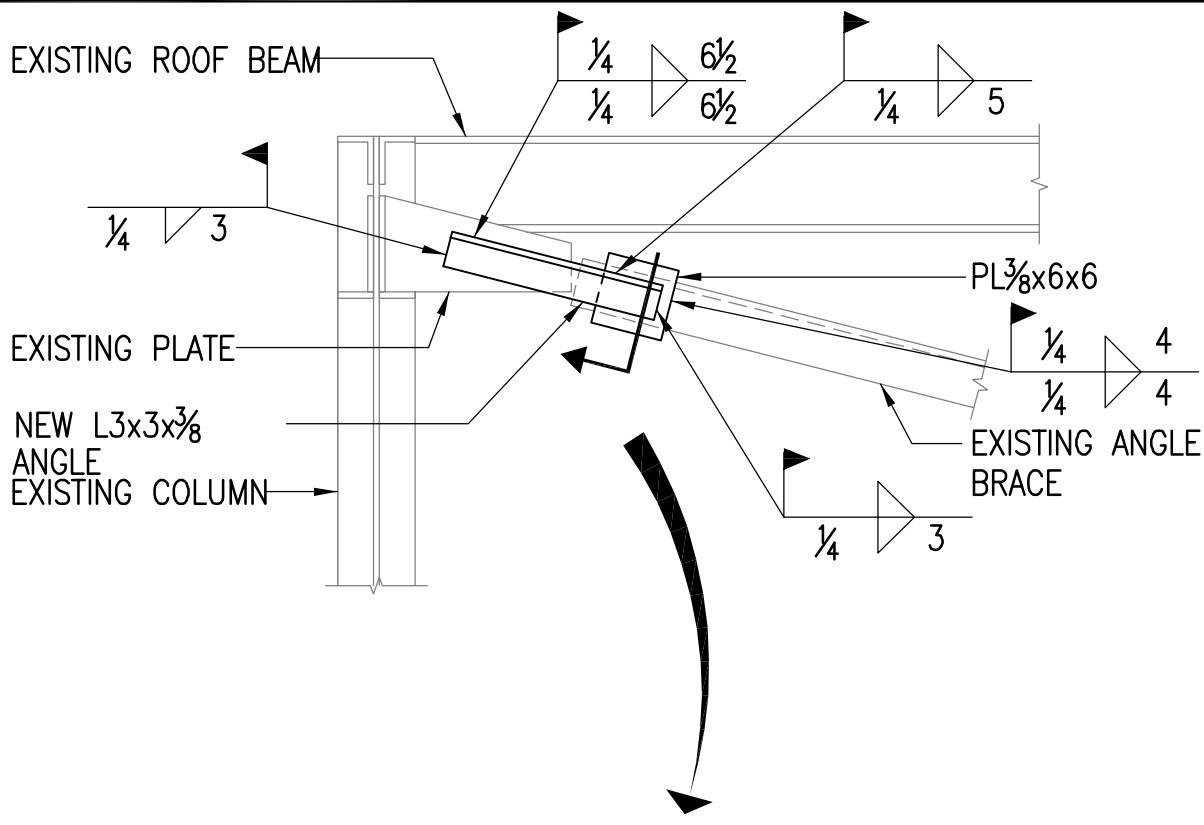
BRACED BAY ELEVATION

MCAS CHERRY POINT NORTH CAROLINA
 MAINTENANCE & REPAIR OF VARIOUS
 STEEL COLUMNS HANGAR 130

THIS DRAWING REVISES IN PART DRAWING NO.

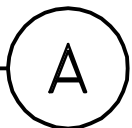
SUPPLEMENTAL DRAWING NO.

S-1

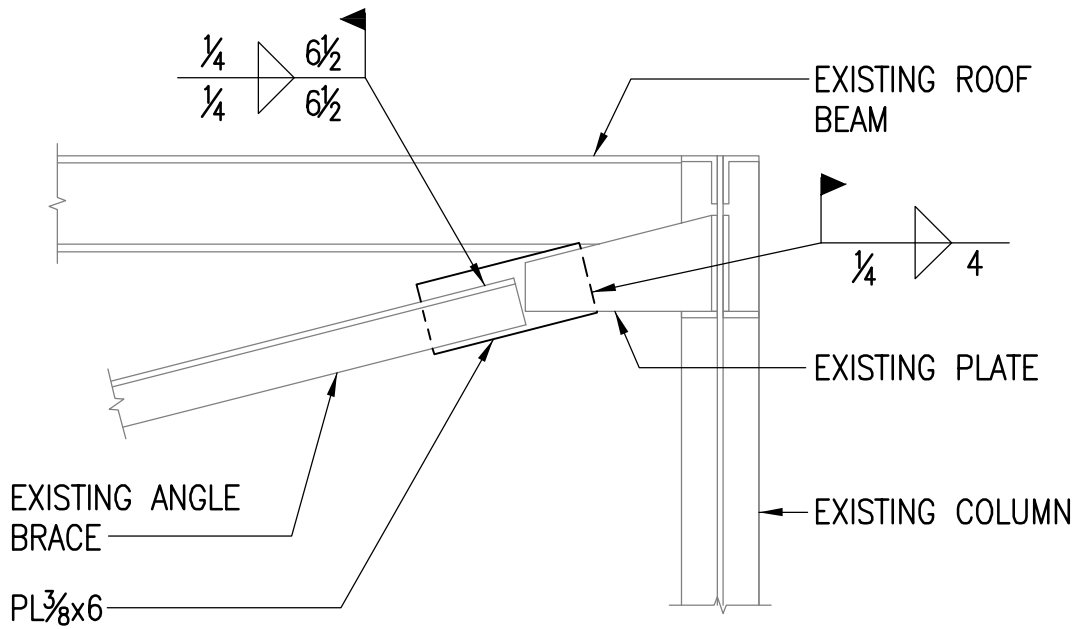


DETAIL

3/4" = 1'-0"



DEPARTMENT OF THE NAVY NAVAL FACILITIES ENGINEERING COMMAND NAVFAC MIDLANT MCNC IPT NAVAL STATION NORFOLK, VIRGINIA			REPAIR DETAIL	
SPEC. NO.: MAXIMO NO.: JOB NO.: DATE: 08/16/2011 CHECKED: EHI DESIGNED: EHI DRAWN: JJK QC:			MCAS CHERRY POINT NORTH CAROLINA MAINTENANCE & REPAIR OF VARIOUS STEEL COLUMNS HANGAR 130	
		THIS DRAWING REVISES IN PART DRAWING NO. SUPPLEMENTAL DRAWING NO.		
		S-2		



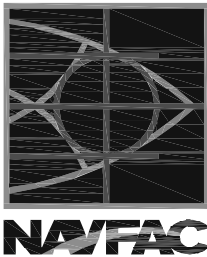
DETAIL

3/4" = 1'-0"

B

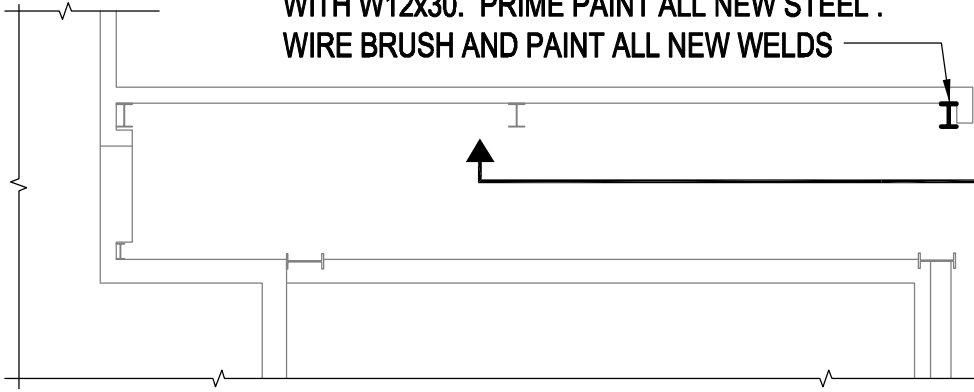


DEPARTMENT OF THE NAVY NAVAL FACILITIES ENGINEERING COMMAND NAVFAC MIDLANT MCNC IPT	
NAVAL STATION	NORFOLK, VIRGINIA
SPEC. NO.:	
MAXIMO NO.:	
JOB NO.:	DATE: 08/16/2011
CHECKED: EHI	DESIGNED: EHI
DRAWN: JJK	QC:



REPAIR DETAIL	
MCAS CHERRY POINT	NORTH CAROLINA
MAINTENANCE & REPAIR OF VARIOUS STEEL COLUMNS HANGAR 130	
THIS DRAWING REVISES IN PART DRAWING NO.	SUPPLEMENTAL DRAWING NO.
	S-3

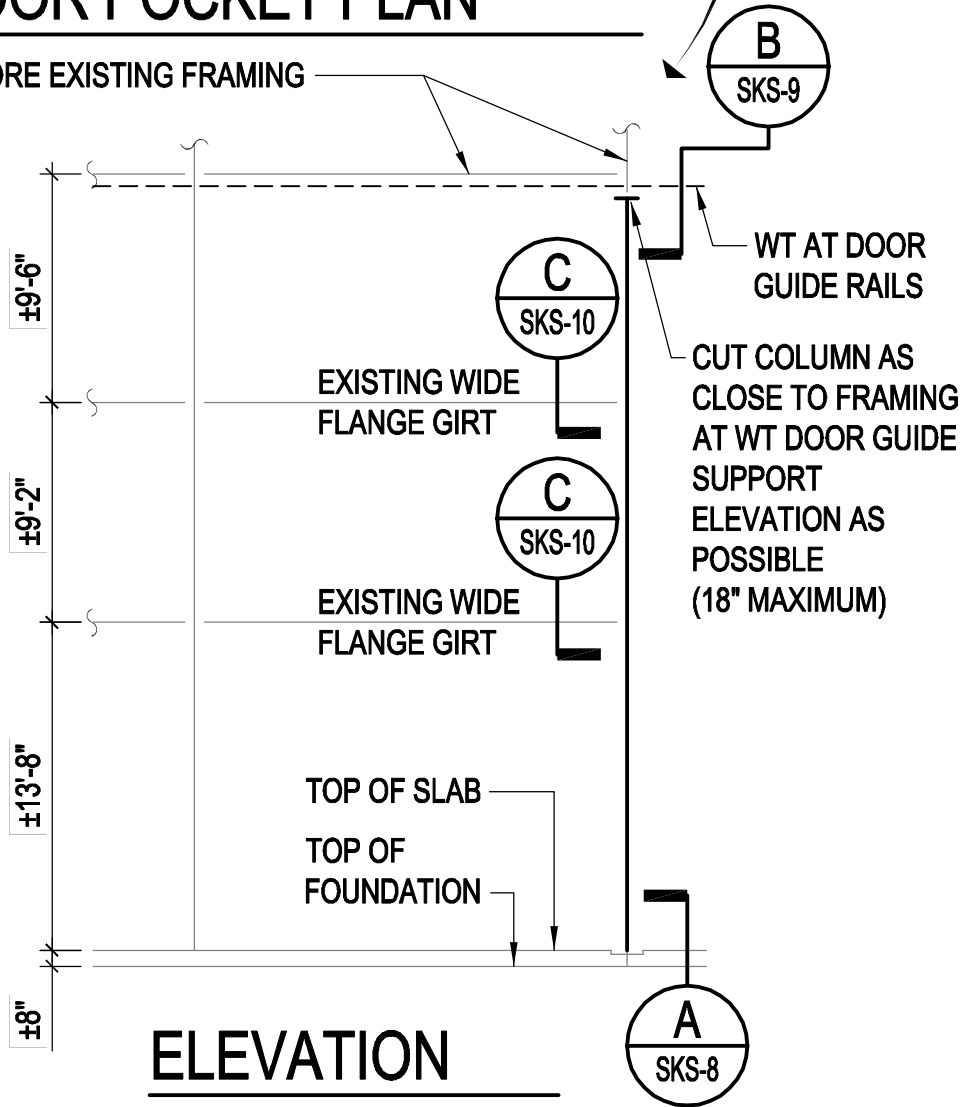
REMOVE EXISTING W12 COLUMN AND REPLACE WITH W12x30. PRIME PAINT ALL NEW STEEL . WIRE BRUSH AND PAINT ALL NEW WELDS



HANGAR DOOR POCKET PLAN

1/8" = 1'-0"

SHORE EXISTING FRAMING

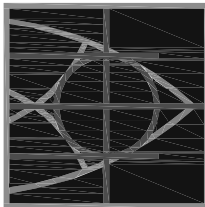


ELEVATION

1/8" = 1'-0"

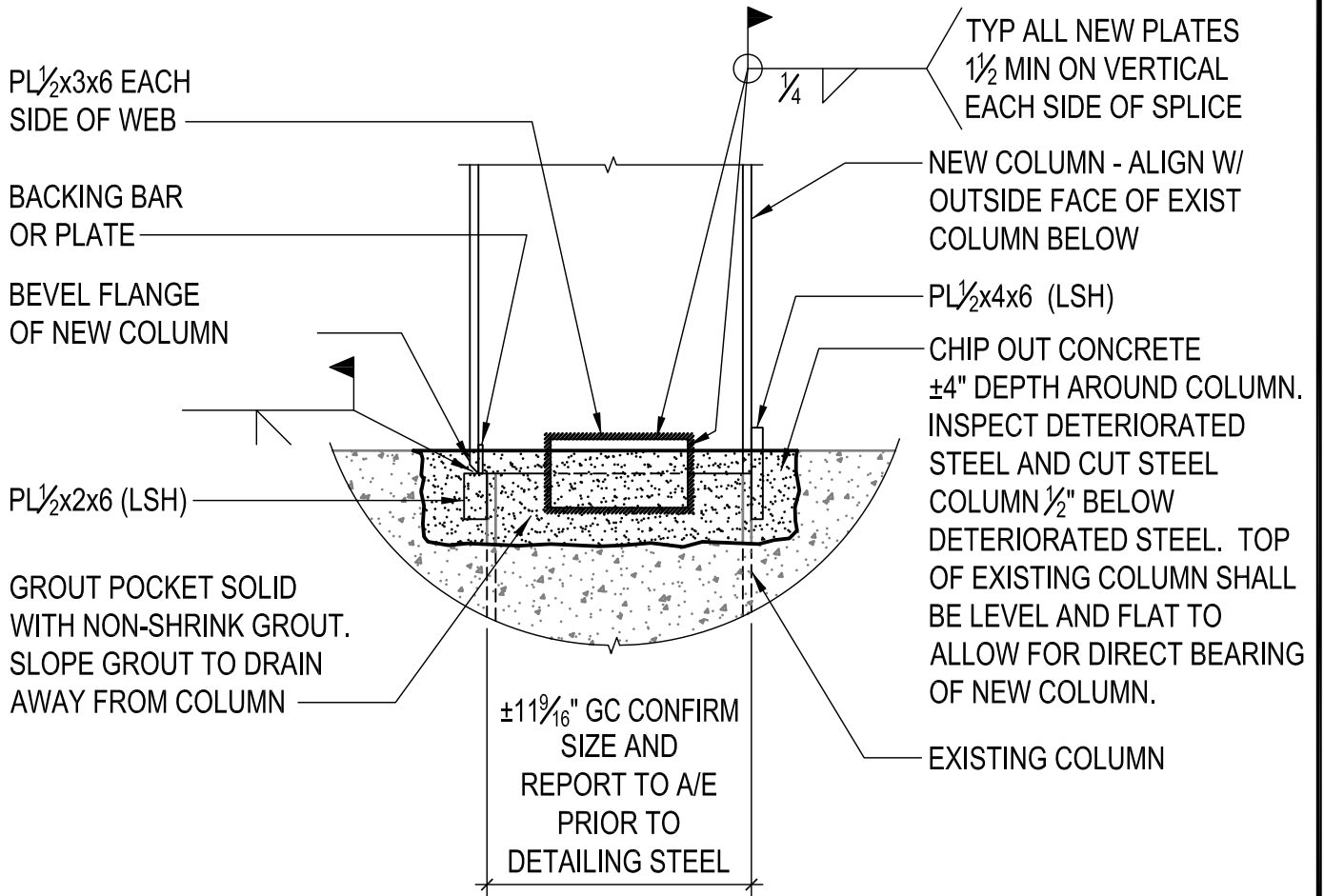


DEPARTMENT OF THE NAVY NAVAL FACILITIES ENGINEERING COMMAND NAVFAC MIDLANT MCNC IPT	
NAVAL STATION	NORFOLK, VIRGINIA
SPEC. NO.:	
MAXIMO NO.:	
JOB NO.:	DATE: 08/16/2011
CHECKED: EHI	DESIGNED: EHI
DRAWN: JJK	QC:



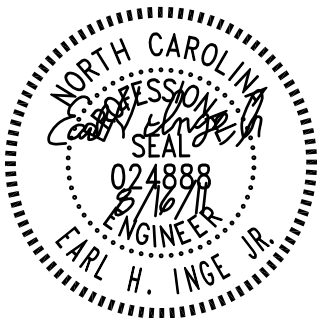
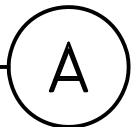
NAVFAC

PLAN AND ELEVATION	
MCAS CHERRY POINT	NORTH CAROLINA
MAINTENANCE & REPAIR OF VARIOUS STEEL COLUMNS HANGAR 130	
THIS DRAWING REVISES IN PART DRAWING NO.	SUPPLEMENTAL DRAWING NO.
	S-4

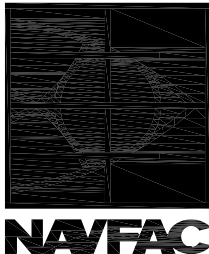


DETAIL

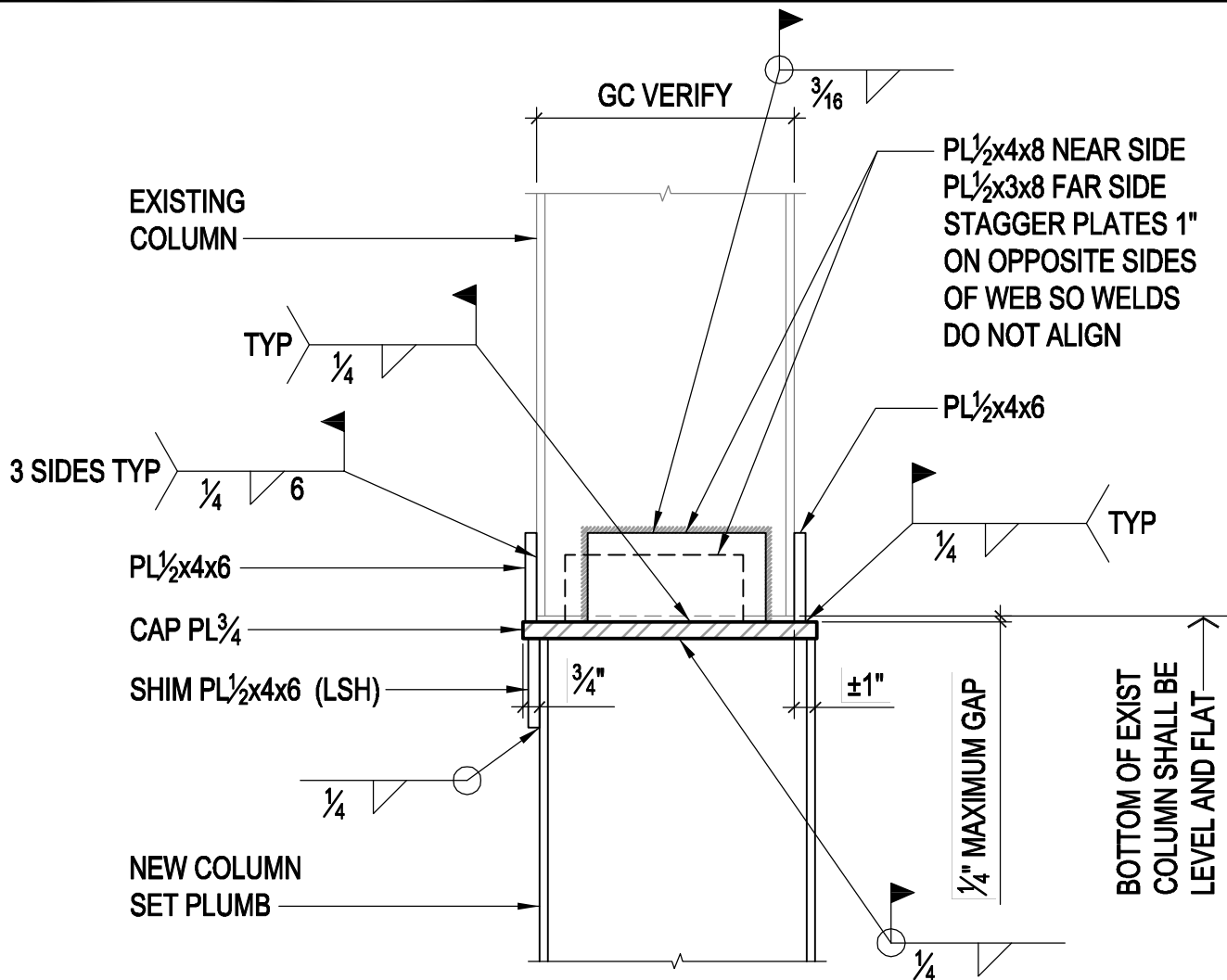
1 1/2" = 1'-0"



DEPARTMENT OF THE NAVY NAVAL FACILITIES ENGINEERING COMMAND NAVFAC MIDLANT MNCN IPT	
NAVAL STATION	NORFOLK, VIRGINIA
SPEC. NO.:	
MAXIMO NO.:	
JOB NO.:	DATE: 08/16/2011
CHECKED: EHI	DESIGNED: EHI
DRAWN: JJK	QC:



COLUMN BASE CONNECTION	
MCAS CHERRY POINT	NORTH CAROLINA
MAINTENANCE & REPAIR OF VARIOUS STEEL COLUMNS HANGAR 130	
THIS DRAWING REVISES IN PART DRAWING NO.	SUPPLEMENTAL DRAWING NO.
	S-5



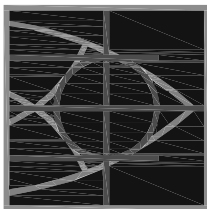
DETAIL

1 1/2" = 1'-0"

B

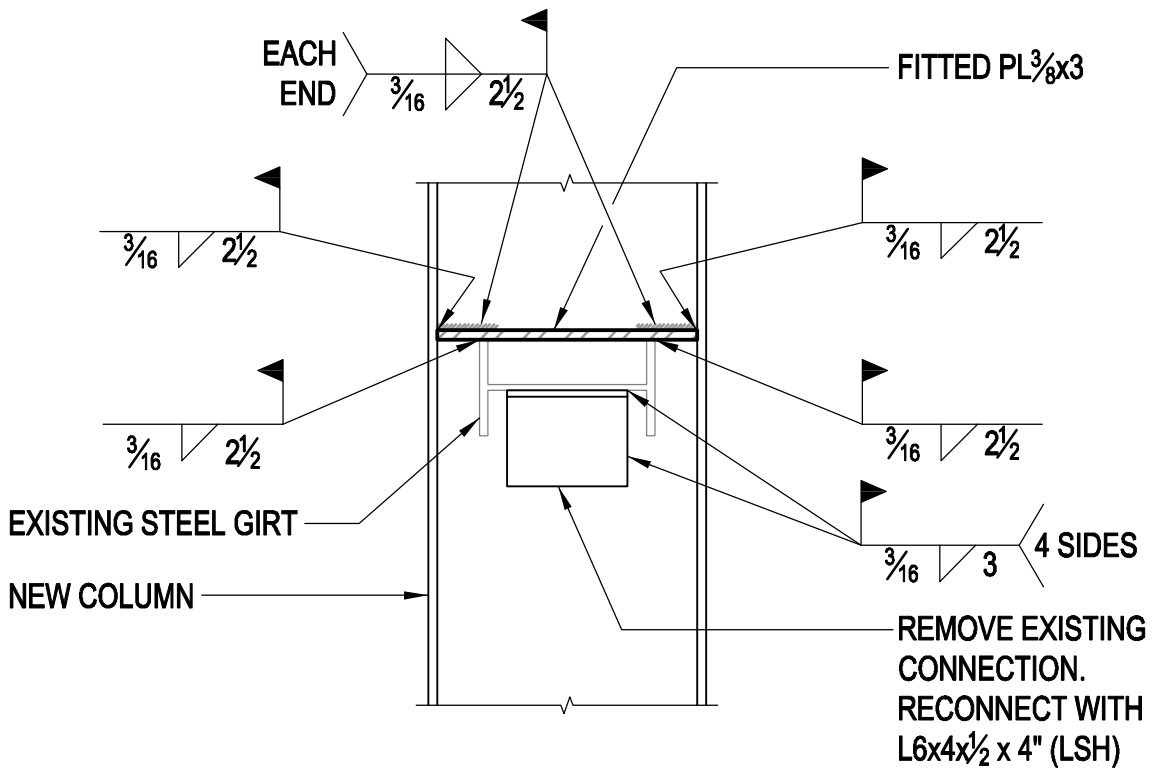


DEPARTMENT OF THE NAVY NAVAL FACILITIES ENGINEERING COMMAND NAVFAC MIDLANT MCNC IPT	
NAVAL STATION NORFOLK, VIRGINIA	
SPEC. NO.:	
MAXIMO NO.:	
JOB NO.:	DATE: 08/16/2011
CHECKED: EHI	DESIGNED: EHI
DRAWN: JJK	QC:



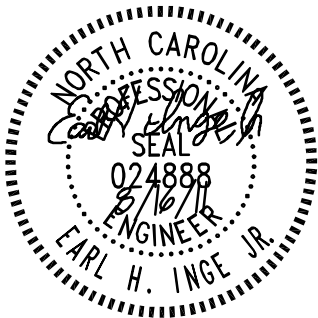
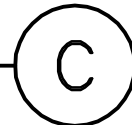
NAVFAC

COLUMN SPLICE	
MCAS CHERRY POINT	NORTH CAROLINA
MAINTENANCE & REPAIR OF VARIOUS STEEL COLUMNS HANGAR 130	
THIS DRAWING REVISES IN PART DRAWING NO.	SUPPLEMENTAL DRAWING NO.
	S-6

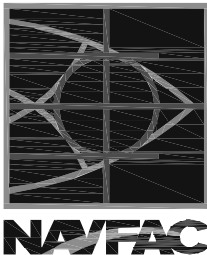


DETAIL

1 1/2" = 1'-0"

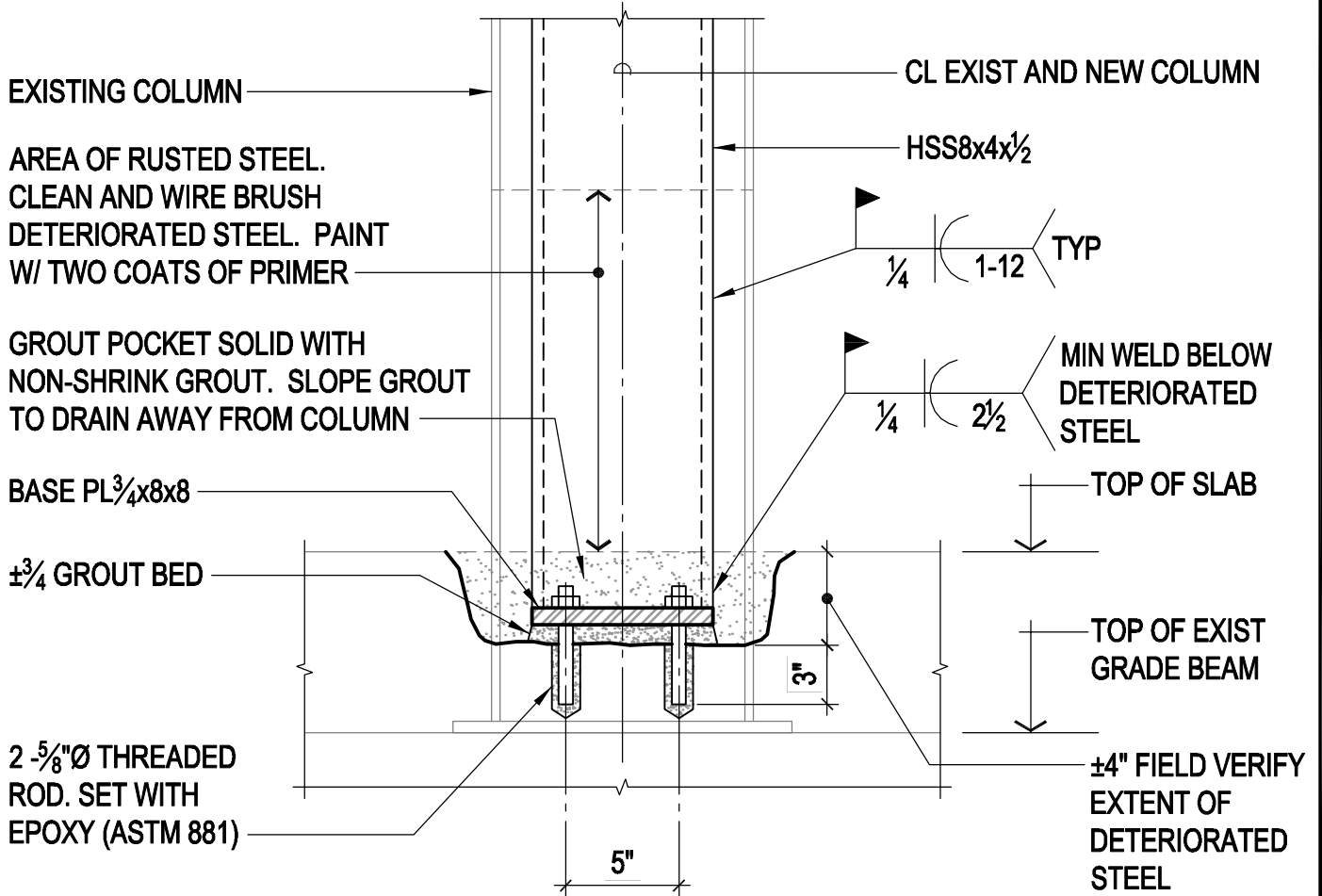


DEPARTMENT OF THE NAVY NAVAL FACILITIES ENGINEERING COMMAND NAVFAC MIDLANT MCNC IPT	
NAVAL STATION	NORFOLK, VIRGINIA
SPEC. NO.:	
MAXIMO NO.:	
JOB NO.:	DATE: 08/16/2011
CHECKED: EHI	DESIGNED: EHI
DRAWN: JJK	QC:



GIRT CONNECTION	
MCAS CHERRY POINT	NORTH CAROLINA
MAINTENANCE & REPAIR OF VARIOUS STEEL COLUMNS HANGAR 130	
THIS DRAWING REVISES IN PART DRAWING NO.	SUPPLEMENTAL DRAWING NO.
	S-7

REFER TO SKETCH SKS-12
FOR CONTINUATION



TYPICAL HANGAR DOOR POCKET COLUMN BASE REPAIR

1 1/2" = 1'-0" (TYPICAL AT 3 LOCATIONS)



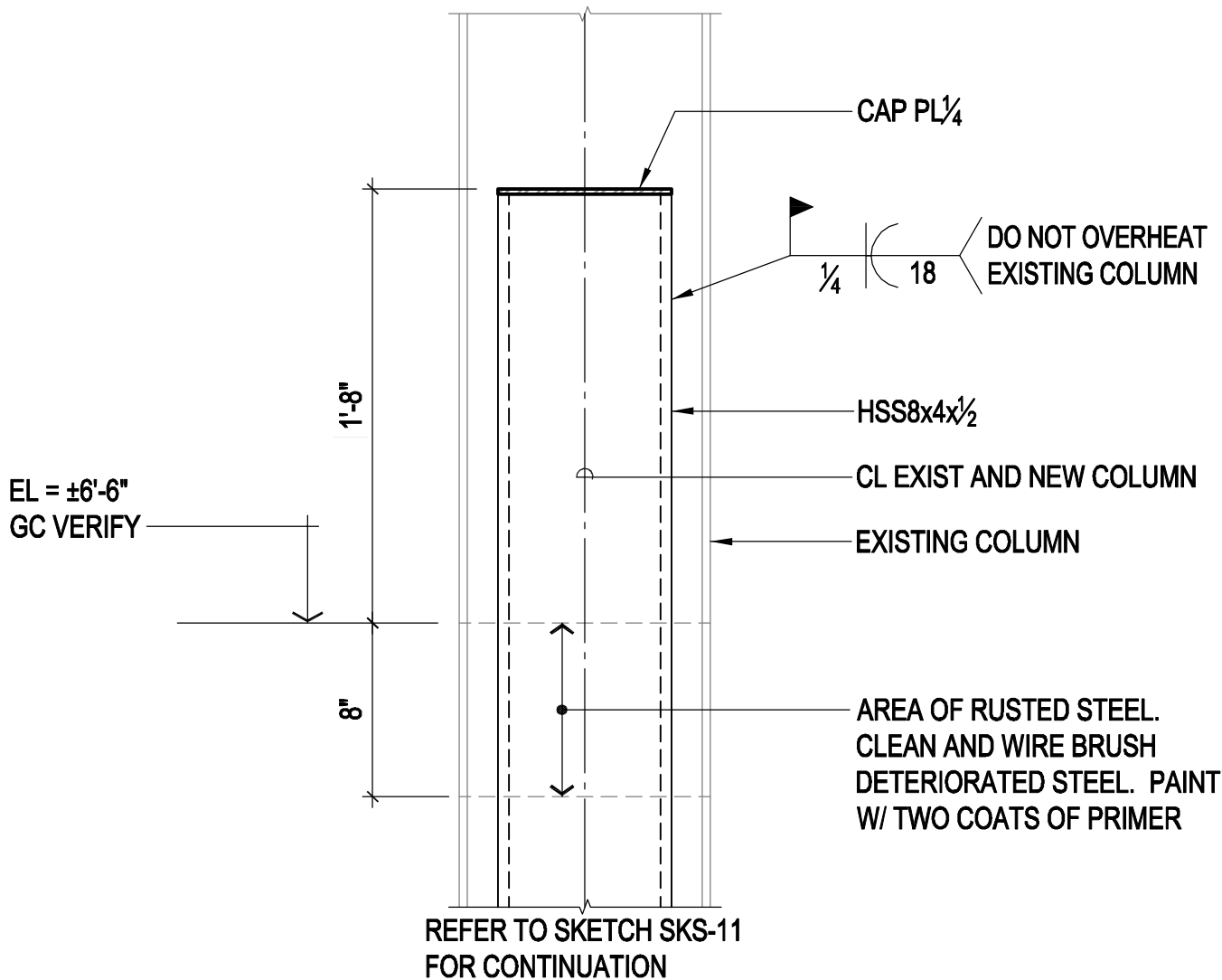
COLUMN BASE REPAIR

MCAS CHERRY POINT NORTH CAROLINA
MAINTENANCE & REPAIR OF VARIOUS
STEEL COLUMNS HANGAR 130

THIS DRAWING REVISES IN PART DRAWING NO.

SUPPLEMENTAL DRAWING NO.

S-8

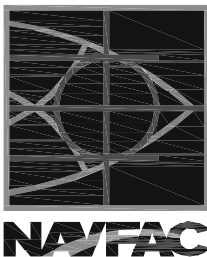


TYPICAL HANGAR DOOR POCKET COLUMN BASE REPAIR

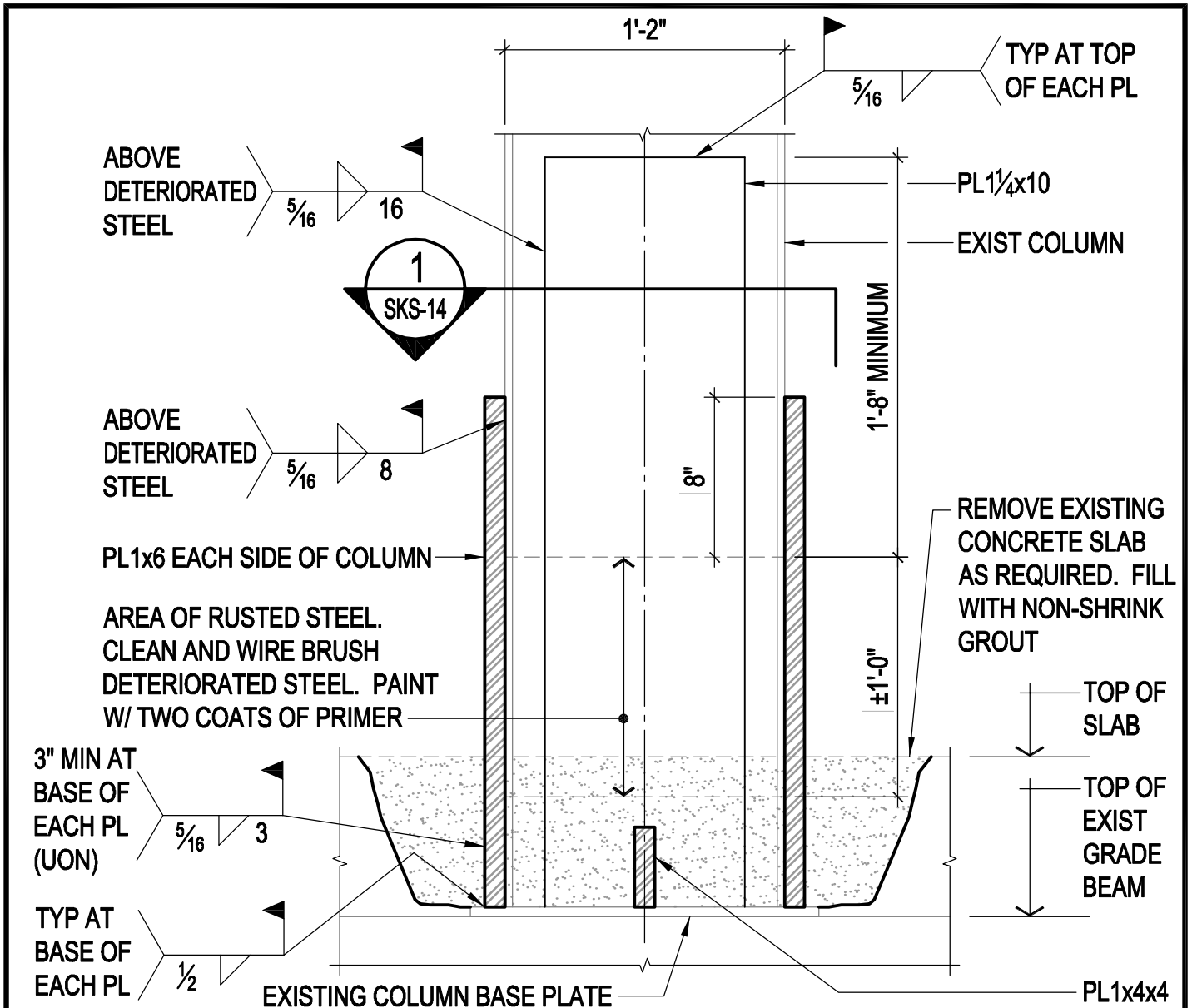
1 1/2" = 1'-0" (TYPICAL AT 3 LOCATIONS)



DEPARTMENT OF THE NAVY NAVAL FACILITIES ENGINEERING COMMAND NAVFAC MIDLANT MCNC IPT	
NAVAL STATION	NORFOLK, VIRGINIA
SPEC. NO.:	
MAXIMO NO.:	
JOB NO.:	DATE: 08/16/2011
CHECKED: EHI	DESIGNED: EHI
DRAWN: JJK	QC:

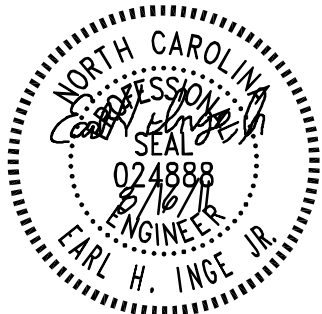


COLUMN BASE REPAIR	
MCAS CHERRY POINT	NORTH CAROLINA
MAINTENANCE & REPAIR OF VARIOUS STEEL COLUMNS HANGAR 130	
THIS DRAWING REVISES IN PART DRAWING NO.	SUPPLEMENTAL DRAWING NO.
	S-9



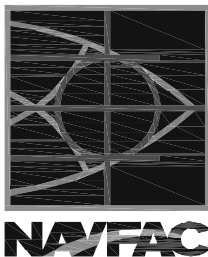
TYPICAL BRACED FRAME COLUMN BASE REPAIR

1 1/2" = 1'-0" (TYPICAL AT 2 LOCATIONS)

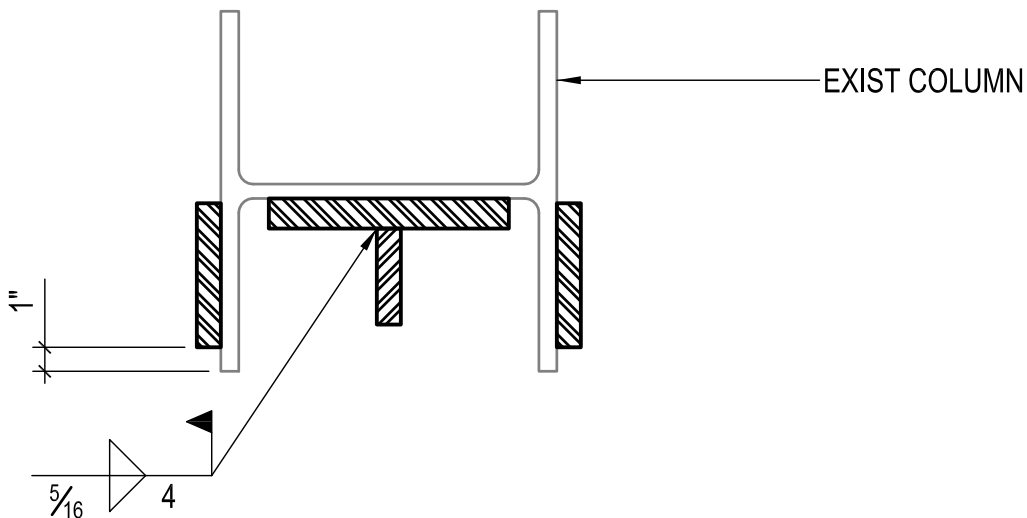


NOTE:
 THIS REPAIR SKETCH IS BASED ON A LIMITED FIELD OBSERVATION AND PROVIDED FOR PRICING ONLY. THE LOWER PORTION OF THE COLUMN COVER PLATES AND THE CONCRETE SLAB AT THE BASE OF THE COLUMN NEED TO BE REMOVED TO ALLOW FOR FIELD OBSERVATION OF STEEL. MODIFICATIONS TO THIS REPAIR MAY BE REQUIRED.

DEPARTMENT OF THE NAVY NAVAL FACILITIES ENGINEERING COMMAND NAVFAC MIDLANT MCNC IPT	
NAVAL STATION	NORFOLK, VIRGINIA
SPEC. NO.:	
MAXIMO NO.:	
JOB NO.:	DATE: 08/16/2011
CHECKED: EHI	DESIGNED: EHI
DRAWN: JJK	QC:



BRACED BAY COLUMN REPAIR	
MCAS CHERRY POINT	NORTH CAROLINA
MAINTENANCE & REPAIR OF VARIOUS STEEL COLUMNS HANGAR 130	
THIS DRAWING REVISES IN PART DRAWING NO.	SUPPLEMENTAL DRAWING NO.
	S-10



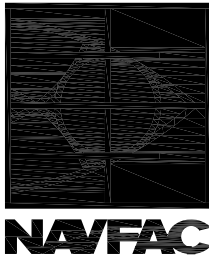
SECTION

1 1/2" = 1'-0"

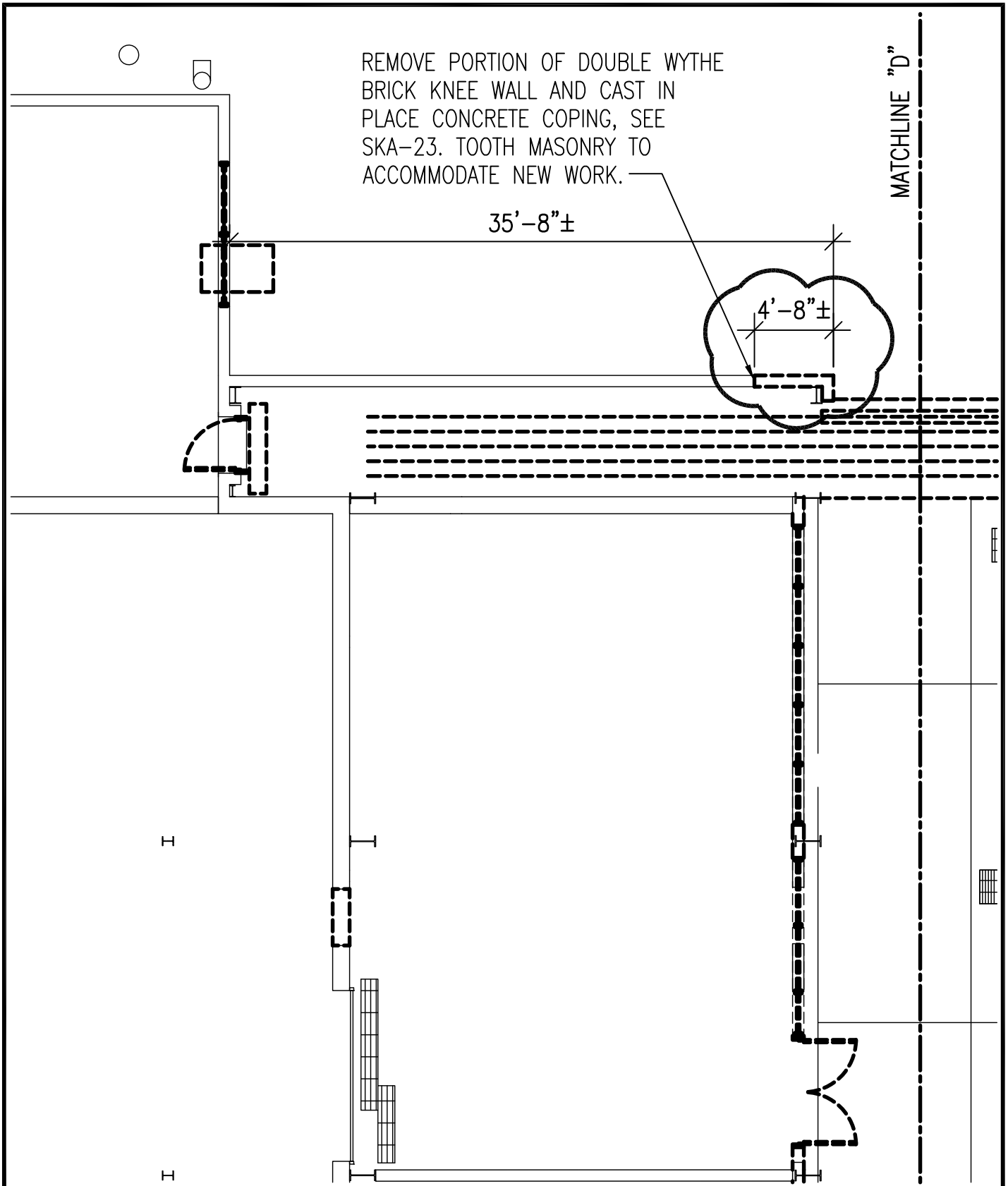
1



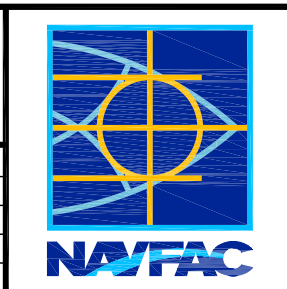
DEPARTMENT OF THE NAVY NAVAL FACILITIES ENGINEERING COMMAND NAVFAC MIDLANT MCNC IPT	
NAVAL STATION	NORFOLK, VIRGINIA
SPEC. NO.:	
MAXIMO NO.:	
JOB NO.:	DATE: 08/16/2011
CHECKED: EHI	DESIGNED: EHI
DRAWN: JJK	QC:



SECTION 1	
MCAS CHERRY POINT	NORTH CAROLINA
MAINTENANCE & REPAIR OF VARIOUS STEEL COLUMNS HANGAR 130	
THIS DRAWING REVISES IN PART DRAWING NO.	SUPPLEMENTAL DRAWING NO.
	S-11

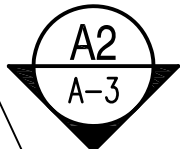


DEPARTMENT OF THE NAVY NAVAL FACILITIES ENGINEERING COMMAND NAVFAC MIDLANT MCNC IPT	
NAVAL STATION	NORFOLK, VIRGINIA
SPEC. NO.:	-
MAXIMO NO.:	-
JOB NO.:	DATE: 07/22/2011
CHECKED: RCH	DESIGNED: RCH
DRAWN: DCD	QC: BCL

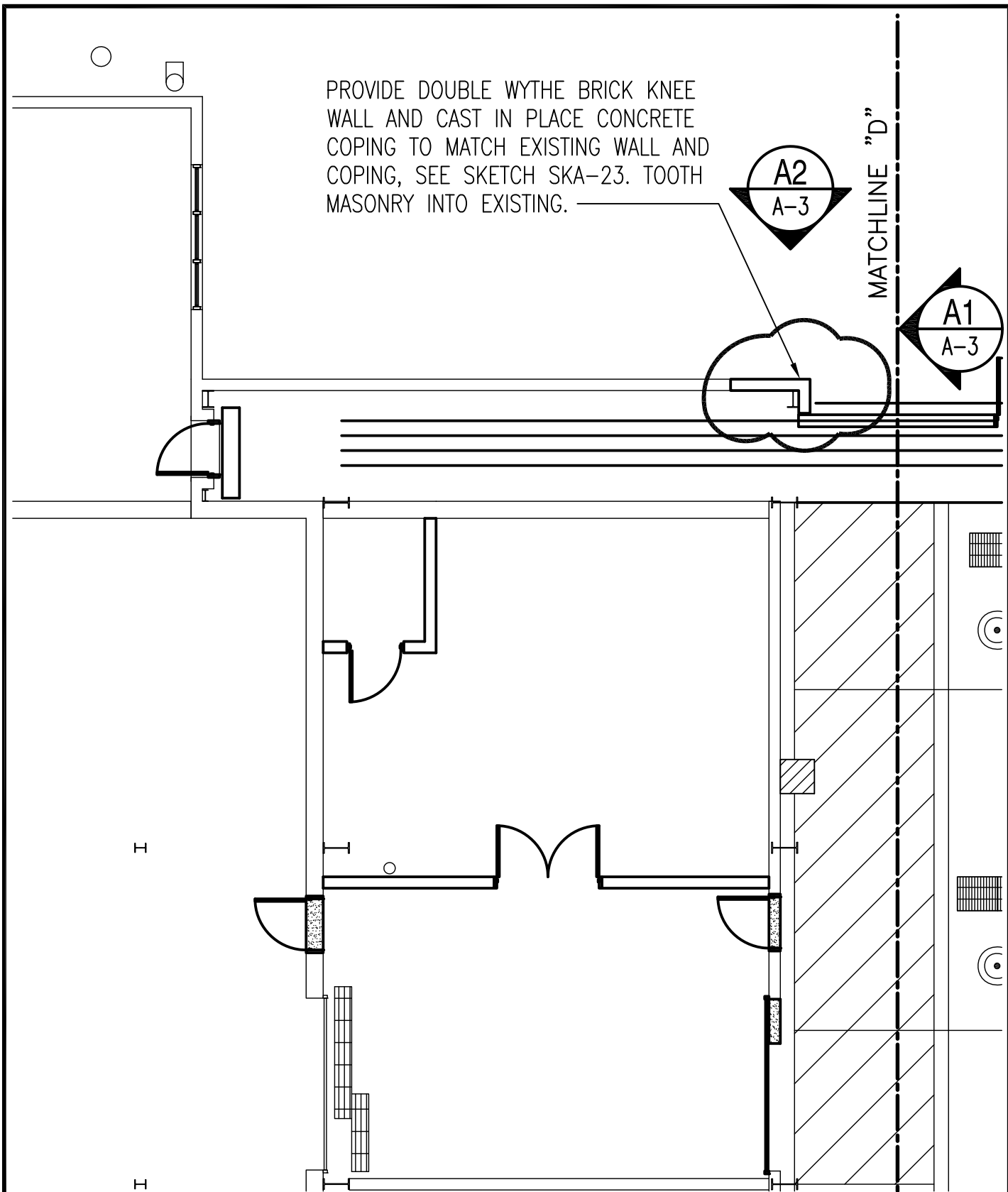
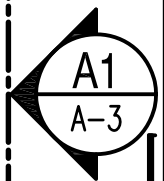


FIRST FLOOR PARTIAL DEMOLITION PLAN	
MCAS CHERRY POINT	NORTH CAROLINA
MAINTENANCE & REPAIR OF VARIOUS STEEL COLUMNS HANGER 130	
THIS DRAWING REVISES IN PART DRAWING NO.	SUPPLEMENTAL DRAWING NO.
-	A-1

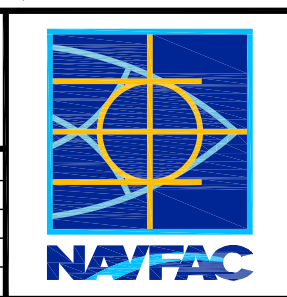
PROVIDE DOUBLE WYTHE BRICK KNEE WALL AND CAST IN PLACE CONCRETE COPING TO MATCH EXISTING WALL AND COPING, SEE SKETCH SKA-23. TOOTH MASONRY INTO EXISTING.



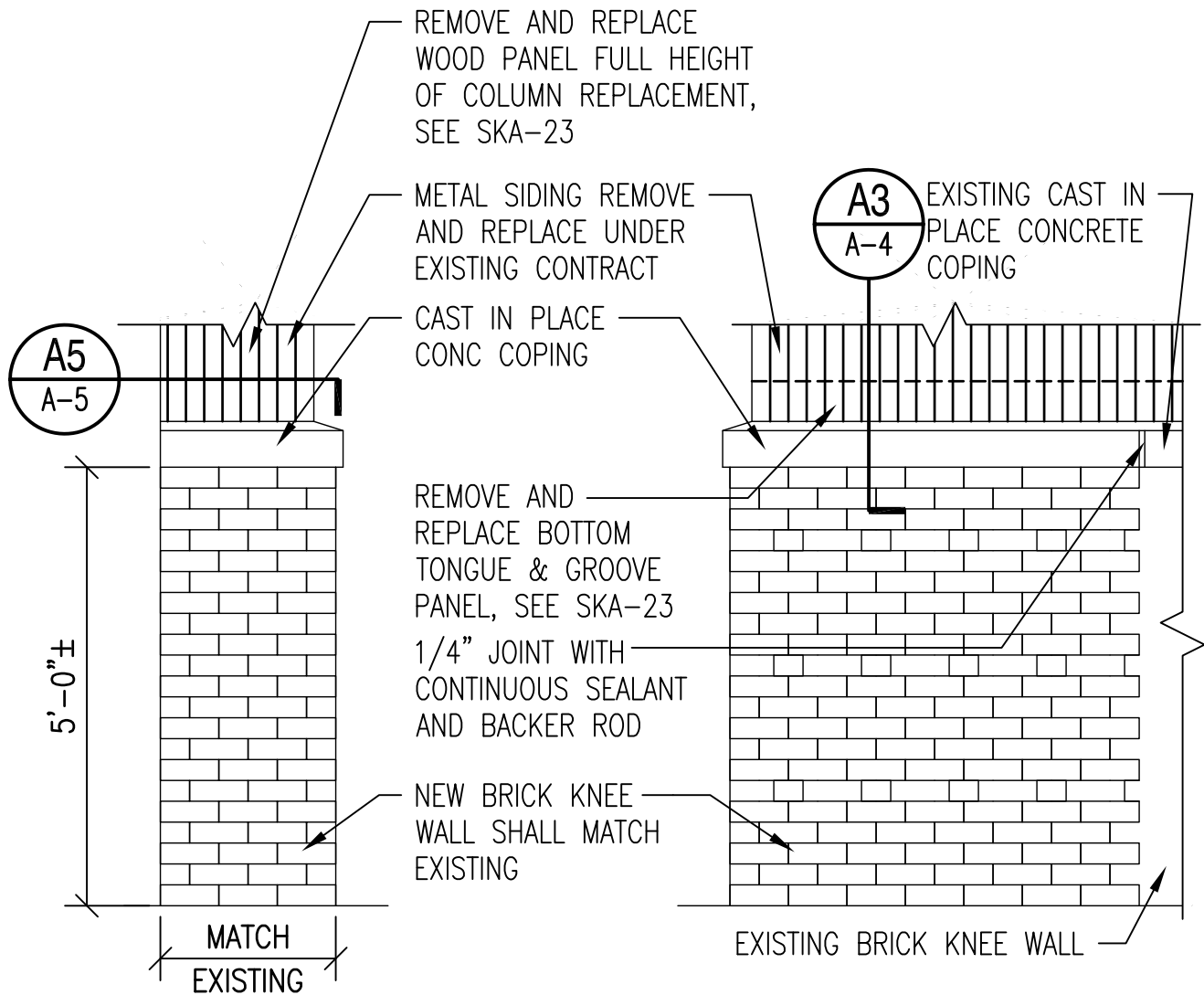
MATCHLINE "D"



DEPARTMENT OF THE NAVY NAVAL FACILITIES ENGINEERING COMMAND NAVFAC MIDLANT MCNC IPT	
NAVAL STATION	NORFOLK, VIRGINIA
SPEC. NO.:	-
MAXIMO NO.:	-
JOB NO.:	DATE: 07/22/2011
CHECKED: RCH	DESIGNED: RCH
DRAWN: DCD	QC: BCL



FIRST FLOOR PARTIAL PLAN	
MCAS CHERRY POINT	NORTH CAROLINA
MAINTENANCE & REPAIR OF VARIOUS STEEL COLUMNS HANGER 130	
THIS DRAWING REVISES IN PART DRAWING NO.	SUPPLEMENTAL DRAWING NO.
-	A-2



ELEVATION

1/2"=1'-0"

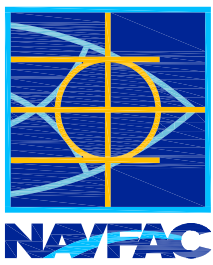
A1

ELEVATION

1/2"=1'-0"

A2

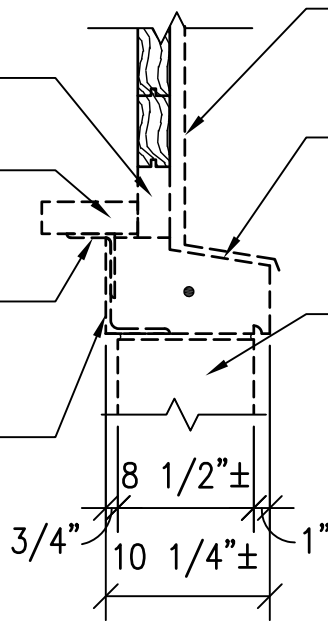
DEPARTMENT OF THE NAVY NAVAL FACILITIES ENGINEERING COMMAND NAVFAC MIDLANT MCNC IPT	
NAVAL STATION	NORFOLK, VIRGINIA
SPEC. NO.:	-
MAXIMO NO.:	-
JOB NO.:	DATE: 07/22/2011
CHECKED: RCH	DESIGNED: RCH
DRAWN: DCD	QC: BCL



ENLARGED ELEVATION	
MCAS CHERRY POINT	NORTH CAROLINA
MAINTENANCE & REPAIR OF VARIOUS STEEL COLUMNS HANGER 130	
THIS DRAWING REVISES IN PART DRAWING NO.	SUPPLEMENTAL DRAWING NO.
-	A-3

REMOVE BOTTOM BAND
OF TONGUE AND
GROOVE WOOD PANEL
REMOVE WOOD
BLOCKING

SAW CUT AND REMOVE
4"x3"x1/4" ANGLE
SAW CUT AND REMOVE
4"x6"x3/8" ANGLE



REMOVE AND REPLACE
SIDING AS INDICATED
UNDER EXISTING CONTRACT
SAW CUT AND REMOVE
CONCRETE COPING,
SEE SKA-21

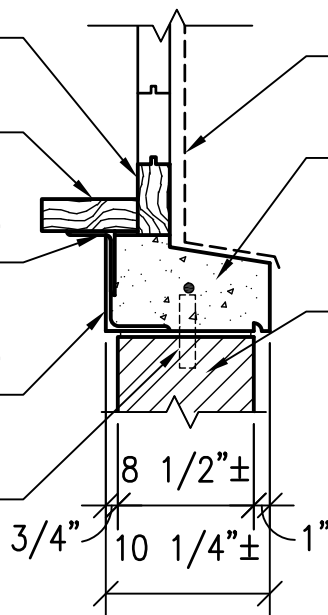
REMOVE PORTION OF
DOUBLE WYTHE
BRICK WALL

DEMOLITION SECTION

1"=1'-0"

A3

PROVIDE BOTTOM BAND
OF TONGUE AND
GROOVE WOOD PANEL
PROVIDE WOOD BLOCKING
TO MATCH EXISTING
PROVIDE 4"x3"x1/4"
ANGLE, WELD TO EXISTING
STEEL ANGLE BEYOND
PROVIDE 4"x6"x3/8"
ANGLE, WELD TO EXISTING
STEEL ANGLE BEYOND
PROVIDE DOWELS AT 12"
ON CENTER



PROVIDE SIDING AS INDICATED
UNDER EXISTING CONTRACT
PROVIDE CAST IN PLACE
CONCRETE COPING W/
REINFORCING TO MATCH EXISTING
PROVIDE DOUBLE WYTHE BRICK
KNEE WALL TO MATCH EXISTING
BRICK WALL, PROVIDE
HORIZONTAL REINFORCING AT
16" ON CENTER

SECTION

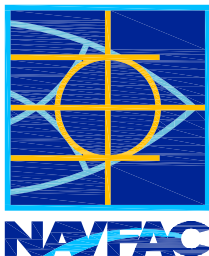
1"=1'-0"

A4

DEPARTMENT OF THE NAVY
NAVAL FACILITIES ENGINEERING COMMAND
NAVFAC MIDLANT
MCNC IPT

NAVAL STATION NORFOLK, VIRGINIA

SPEC. NO.: -
MAXIMO NO.: -
JOB NO.: DATE: 07/22/2011
CHECKED: RCH DESIGNED: RCH
DRAWN: DCD QC: BCL



SECTIONS

MCAS CHERRY POINT NORTH CAROLINA
MAINTENANCE & REPAIR OF VARIOUS
STEEL COLUMNS HANGER 130

THIS DRAWING REVISES IN PART DRAWING NO.

SUPPLEMENTAL DRAWING NO.

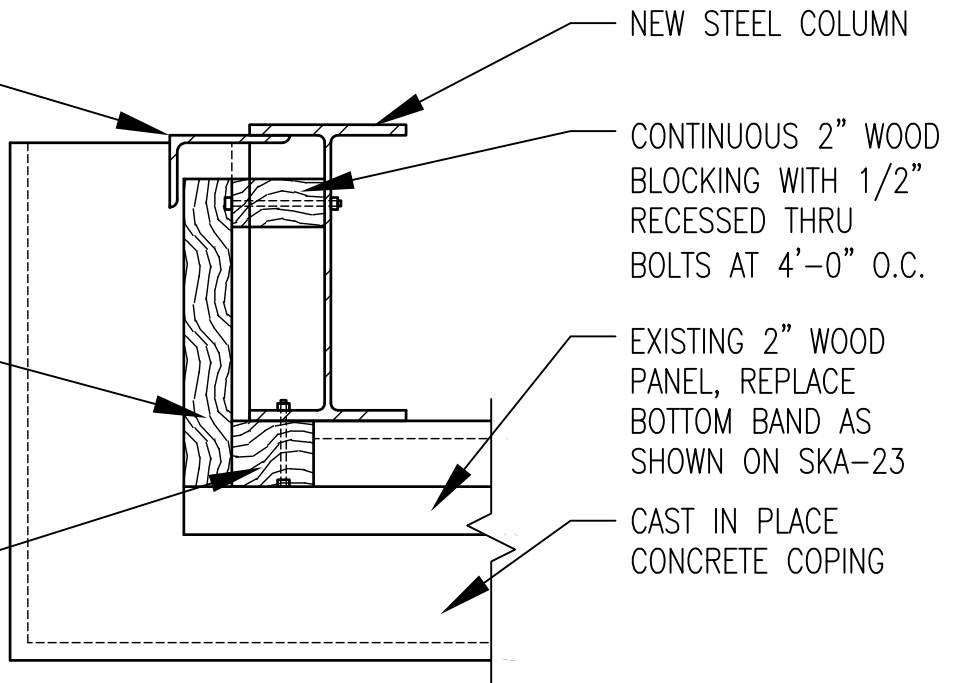
-

A-4

5"x3"x5/16" ANGLE
CONTINUOUS

PROVIDE 2" TONGUE
AND GROOVE WOOD
PANEL TO MATCH
EXISTING

CONTINUOUS WOOD
BLOCKING WITH
1/2" RECESSED
THRU BOLTS AT
4'-0" O.C.



NEW STEEL COLUMN

CONTINUOUS 2" WOOD
BLOCKING WITH 1/2"
RECESSED THRU
BOLTS AT 4'-0" O.C.

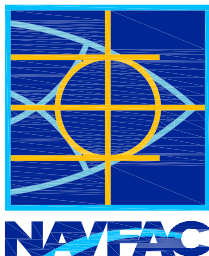
EXISTING 2" WOOD
PANEL, REPLACE
BOTTOM BAND AS
SHOWN ON SKA-23

CAST IN PLACE
CONCRETE COPING

SECTION
1-1/2"=1'-0"

A5

DEPARTMENT OF THE NAVY NAVAL FACILITIES ENGINEERING COMMAND NAVFAC MIDLANT MCNC IPT	
NAVAL STATION	NORFOLK, VIRGINIA
SPEC. NO.:	-
MAXIMO NO.:	-
JOB NO.:	DATE: 07/22/2011
CHECKED: RCH	DESIGNED: RCH
DRAWN: DCD	QC: BCL



SECTIONS	
MCAS CHERRY POINT	NORTH CAROLINA
MAINTENANCE & REPAIR OF VARIOUS STEEL COLUMNS HANGER 130	
THIS DRAWING REVISES IN PART DRAWING NO.	SUPPLEMENTAL DRAWING NO.
-	A-5