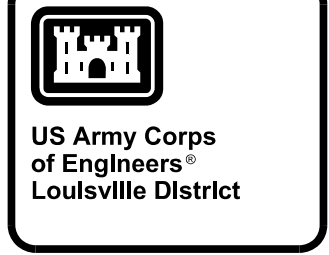


SHEET NOTES

- 1 BETTERMENT: CONCRETE PAVEMENT.
- 2 WASH RACK.
- 3 OPTION: BILEVEL LOADING RAMP.
- 4 CHAIN LINK FENCE.
- 5 SINGLE DUMPSTER WITH ENCLOSURE.
- 6 HEAVY-DUTY BITUMINOUS PAVEMENT.
- 7 CONCRETE SIDEWALK.
- 8 CONCRETE MOTORCYCLE PARKING.
- 9 PAVEMENT STRIPING.
- 10 CONCRETE CURB AND GUTTER.
- 11 SLIDING CHAIN LINK GATE.
- 12 LIGHT-DUTY BITUMINOUS PAVEMENT.
- 13 CHAIN LINK PERSONNEL GATE.
- 14 BICYCLE RACK.
- 15 CONCRETE FILLED STEEL BOLLARD (PAINTED YELLOW).
- 16 CARD READER.
- 17 BETTERMENT: RELOCATE EXISTING WETLAND TO THE BACK OF SITE.
- 18 PROVIDE STOP SIGN.

LEGEND

- LIGHT-DUTY BITUMINOUS PAVEMENT
- HEAVY-DUTY BITUMINOUS PAVEMENT
- CONCRETE
- PROPERTY LINE
- ANTI-TERRORISM FORCE PROTECTION (AT-FP) SETBACK LINES (82') FROM TEMF
- CHAIN LINK FENCE



AMENDMENT	DATE	DESCRIPTION
AMENDMENT 002	09/2011	
AMENDMENT 003	10/2011	

DESIGNED BY: D. LARBERT	CHECKED BY: G. LYNN	DATE: 10/6/2011
SUBMITTED BY: MASON & HANGER	PROJECT NO.:	FILE NUMBER:
PLOT SCALE:	PLOT DATE:	FILE NAME:
AS SHOWN	10/6/2011	MILL_CS100.dgn
SIZE:	ANSI D	

U.S. ARMY CORPS OF ENGINEERS
LOUISVILLE DISTRICT
LOUISVILLE, KENTUCKY

Mason & Hanger
A Division of Environmental Computer

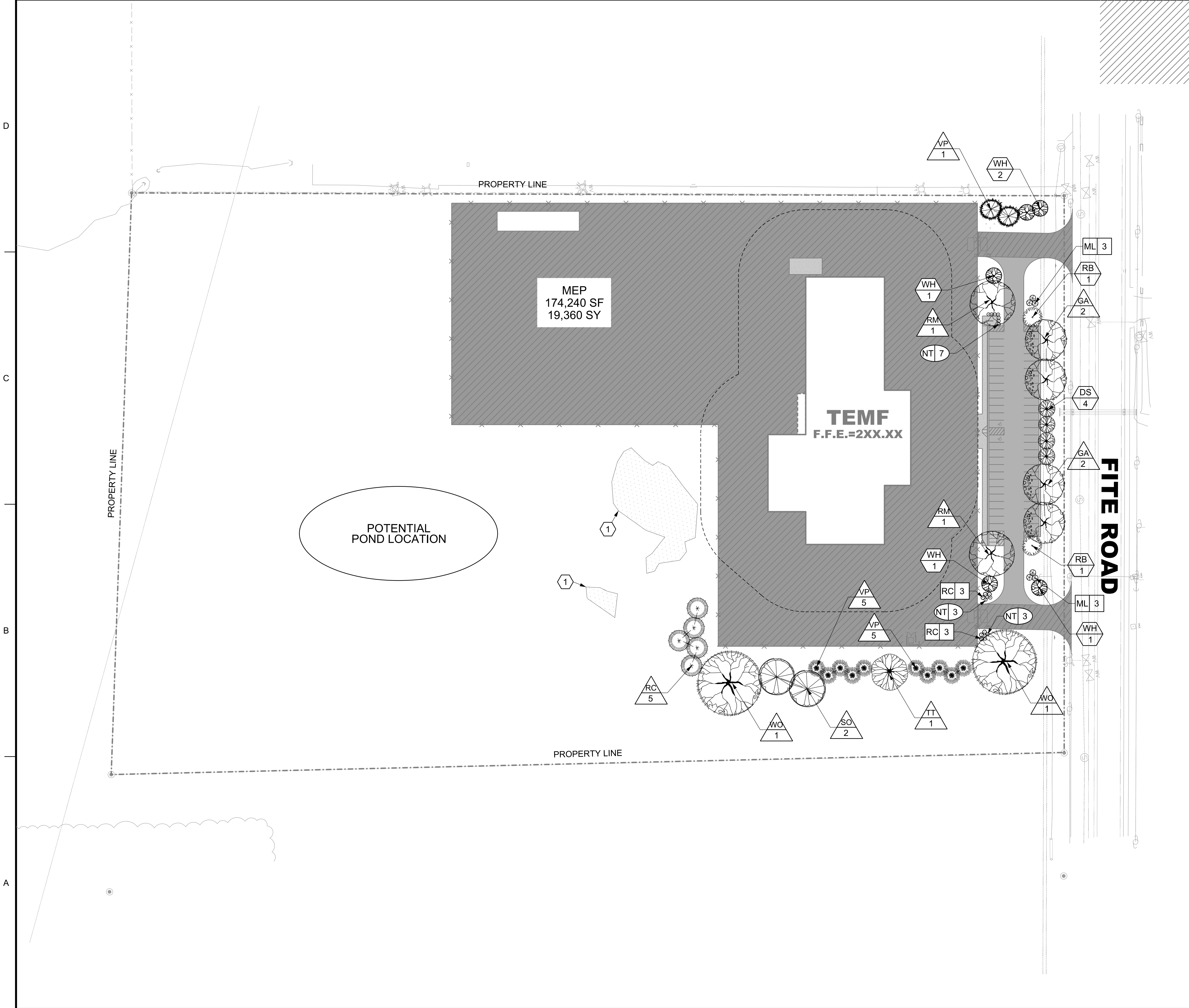
MILLINGTON OMS / AMISA
MILLINGTON, TENNESSEE
PROJECT #: CAR 12-78256
P# 335021

OVERALL SITE LAYOUT

SHEET IDENTIFICATION
CS100
SHEET 5 OF 16



P:\010127 Millington TEMF DB RFP\CADD\civil\MILL_CS100.dgn
10/6/2011
10:41:02 AM



GENERAL NOTES

- TREES SHALL NOT BE LOCATED WITHIN 4 FEET OF CURBS AND WALKS.
- TREES, SHRUBS AND PERENNIALS SHALL BE LOCATED AT LEAST 8 LATERAL FEET AWAY FROM BURIED UTILITY LINES.
- PROVIDE 3" DEPTH, 1'-6" RADIUS (3'-0" DIAMETER) OF SHREDDED HARDWOOD MULCH AROUND EACH NEWLY PLANTED TREE AND SHRUB.
- ALL NEW LARGE LANDSCAPE PLANT MATERIAL, E.G. TREES, SHRUBS AND PERENNIALS SHALL BE LOCATED A MINIMUM OF 33 FEET AWAY FROM THE PERIMETER OF ALL BUILDING STRUCTURES.
- PLANT VEGETATION MUST BE NATIVE TO THE TENNESSEE STATE REGION - PLANT HARDINESS ZONE 7.
- REFER TO LANDSCAPE SHEET LP-500 FOR LANDSCAPE DETAILS AND LANDSCAPE SHEET LP-600 FOR LANDSCAPE PLANT SCHEDULE.

SHEET NOTES

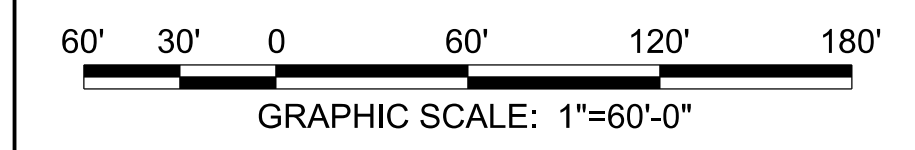
- 1 OPTION: RELOCATE EXISTING WETLAND TO THE BACK OF SITE.

PLANT LEGEND

- TREE - (Large: 15' to 100' in Height at Maturity) IDENTIFICATION NUMBER
- QUANTITY
- TREE - (Medium/Ornamental: 15' to 30' in Height at Maturity) IDENTIFICATION NUMBER
- QUANTITY
- SHRUB - (Medium to Large: 6' to 10' in Height at Maturity) IDENTIFICATION NUMBER
- QUANTITY
- SHRUB - (Small: 3' to 4' in Height at Maturity) IDENTIFICATION NUMBER
- QUANTITY

LEGEND

- RELOCATED EXISTING WETLAND AREA
- PROPERTY LINE
- ANTI-TERRORISM FORCE PROTECTION (AT-FP) LANDSCAPE SETBACK LINE (33') FROM TEMF
- ANTI-TERRORISM FORCE PROTECTION (AT-FP) SETBACK LINES (82') FROM TEMF



DATE	DESCRIPTION	APPR.	MARK
10/2011	AMENDMENT 003		

DESIGNED BY: D. LAMBERT	CHECKED BY: G. LYNN	DATE: 10/2011	SUBMITTER: MASON & HANGER	PROJECT NO.:W9220R-11-24-070	CONTRACT NO.:-	FILE NUMBER:-
U.S. ARMY CORPS OF ENGINEERS LOUISVILLE DISTRICT LOUISVILLE, KENTUCKY						

CERTIFIED FINAL

MILLINGTON OMS / AMISA
MILLINGTON, TENNESSEE
PROJECT #: CAR 12-78256
P# 335021

OVERALL LANDSCAPE PLAN

SHEET IDENTIFICATION
LP100
SHEET 8 OF 16

P:\010127 Millington TEMF DB RFP\CADD\civil\MILL_LP100.dgn
10/6/2011
10:34:21 AM